

SumHi

AI-Driven Global Cultural Heritage Digitization
and Cultural IP Incubation



Independently Developed AI Acquisition and Reconstruction Technology | 01

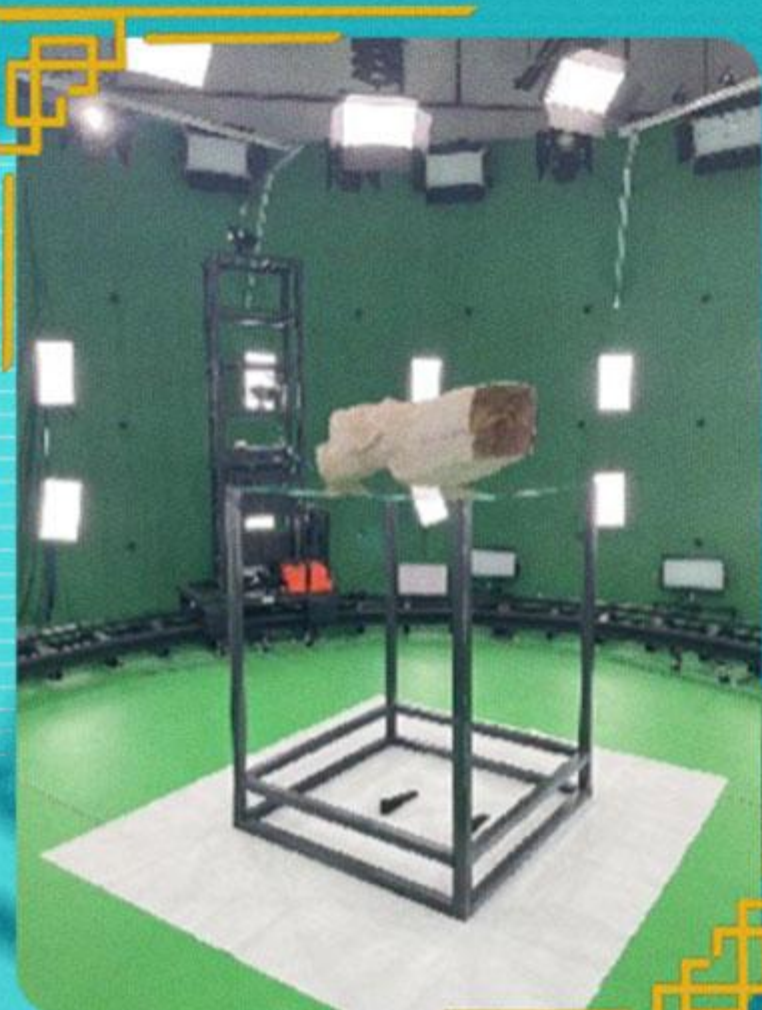
We provide global museums and cultural institutions with high-precision, low-cost, fully automatic artifact digital model acquisition and reconstruction technology. Acquisition and reconstruction can be achieved within 30 minutes, reducing acquisition time by 90% and cutting overall costs by 80%. We have completed the acquisition of over 3,000 models of cultural relics in just six months.



1

Equipment Setup

Flexibly arrange different equipment based on various scenarios and targets.



2

Collection Photography

Minimal manual intervention, fast collection speed, and high material completeness. Over 300 photos can be captured in just five minutes.



3

AI Feature Extraction

Extractable dimensions include: glaze colour, vessel shape, patterns, etc. AI analysis takes only ten seconds to produce results.



Plaster

A material widely used in sculpture and other art fields. Its chemical composition is a hydrated form of calcium sulfate.

4

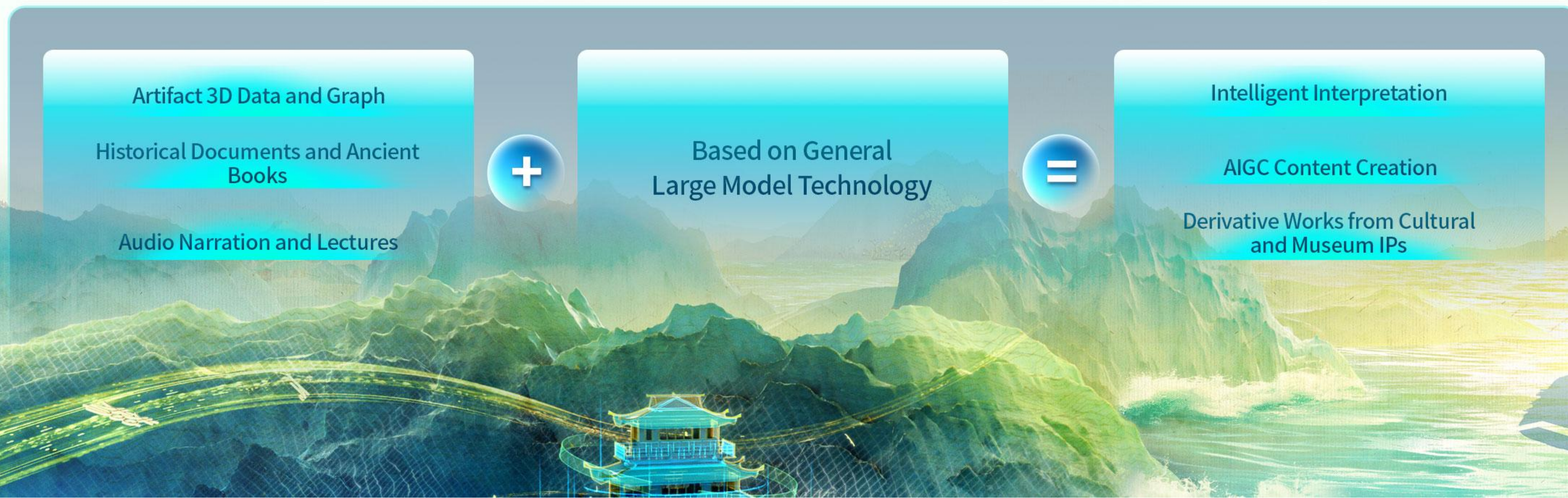
AI Modeling

Self-developed and pure-vision-based "Cultural Relics Neural Core Surface Reconstruction Algorithm" enables precise reconstruction of the microscopic details of cultural relic surfaces.



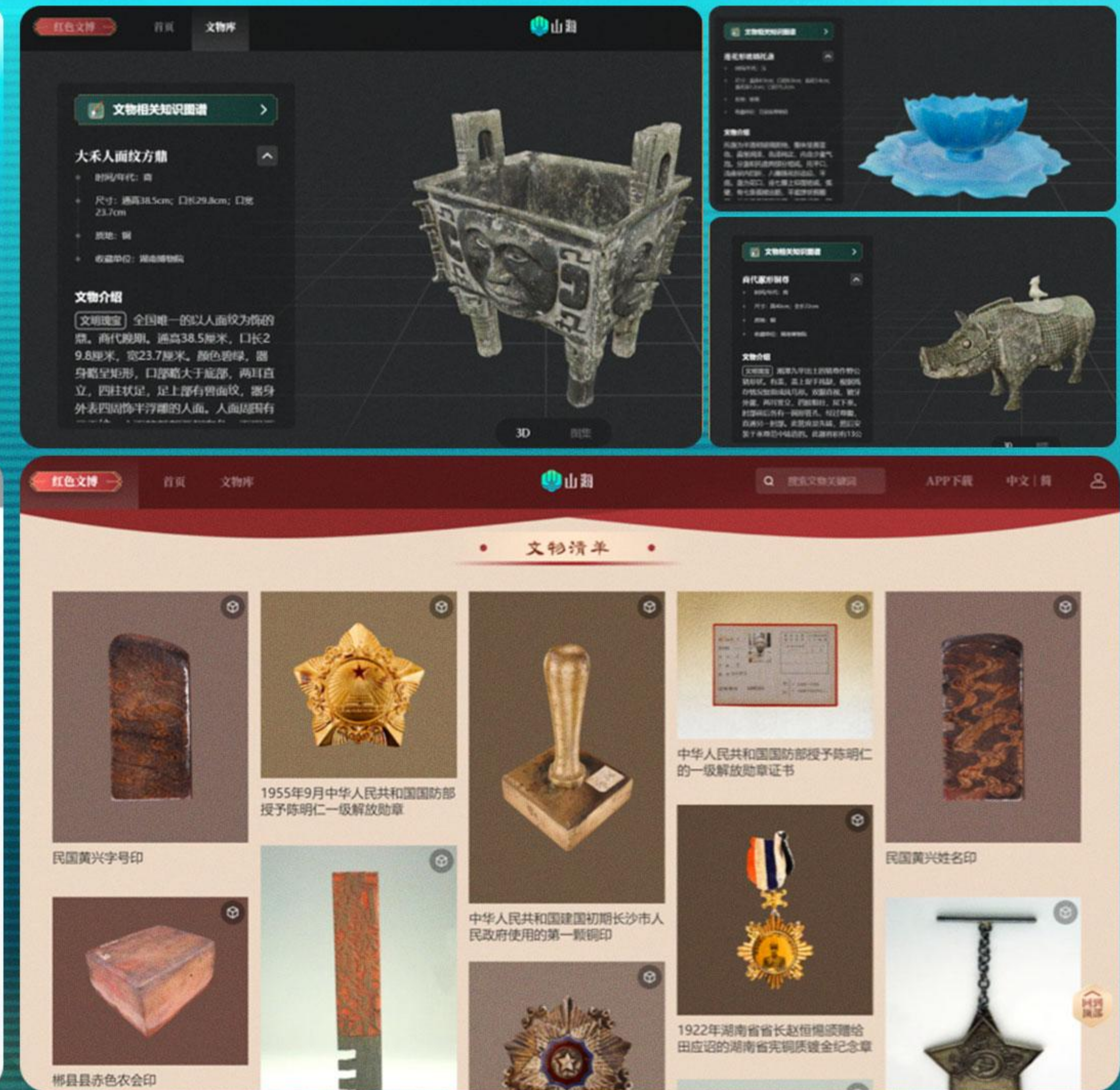
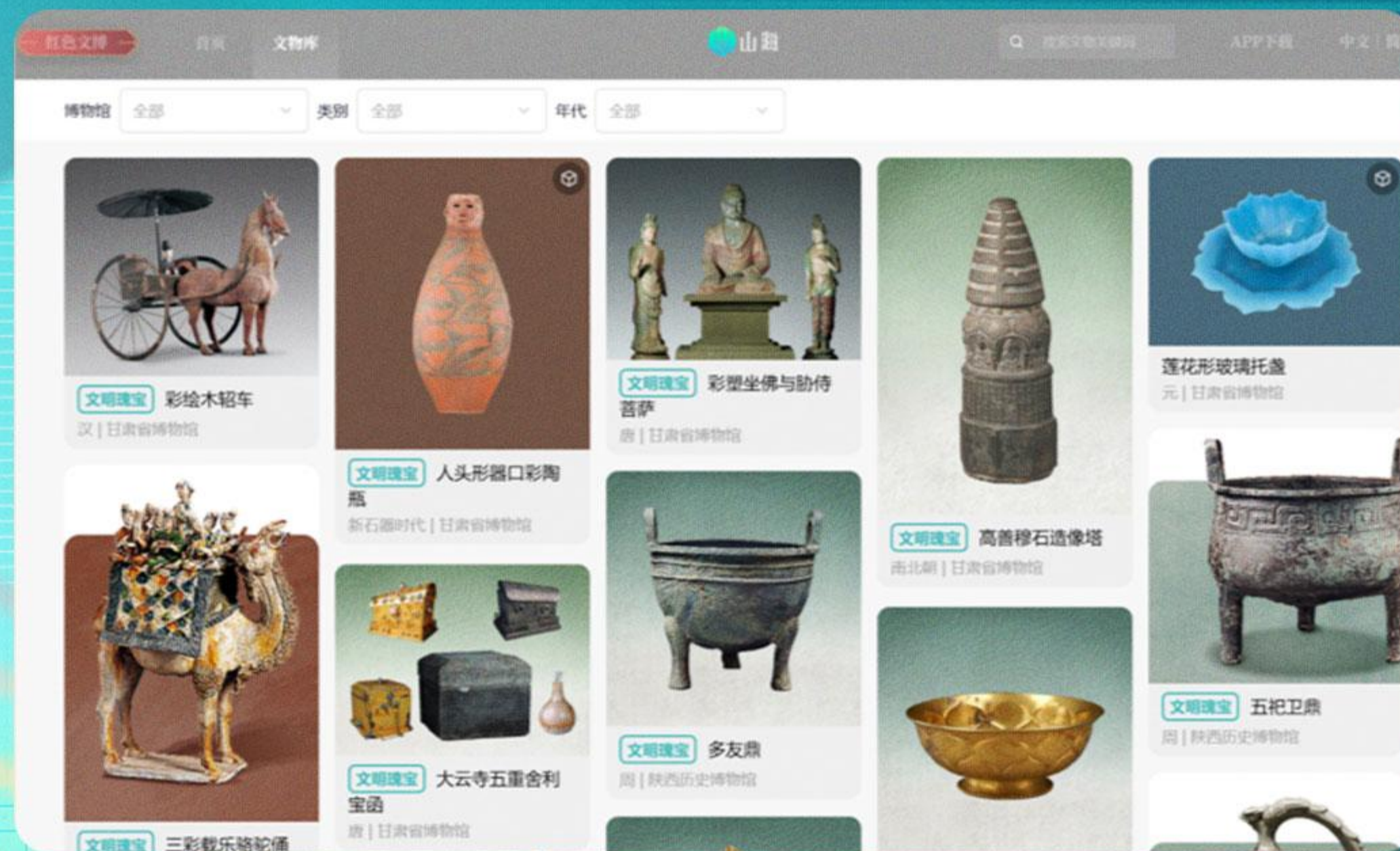
02 | Highly Secure Cultural Artifact Data Protection

Utilizing blockchain technology and digital watermarking techniques, our system offers a traceable watermark protection technology, covering the selection of cultural artifacts, custom watermark creation, watermark embedding, blockchain recording, and watermark verification. This system ensures that data asset protection is verifiable and traceable, and the associated rights can be confirmed accurately.





Assist museums in organizing their existing databases
and breaking down spatial barriers.
Build an Online Resource Library of Museums Worldwide.
Currently, over 100,000 structured cultural relics data entries
have been created.
And the expansion is ongoing...



Discovering the Connections Between cultural relics

Through the intuitive display and interactive features of the cultural relics knowledge map, the relationships between cultural relics and other artifacts such as historical figures, cultures, systems etc., and more are clearly revealed.



Self-Developed Professional Large AI Model in the Field of Cultural Heritage

03

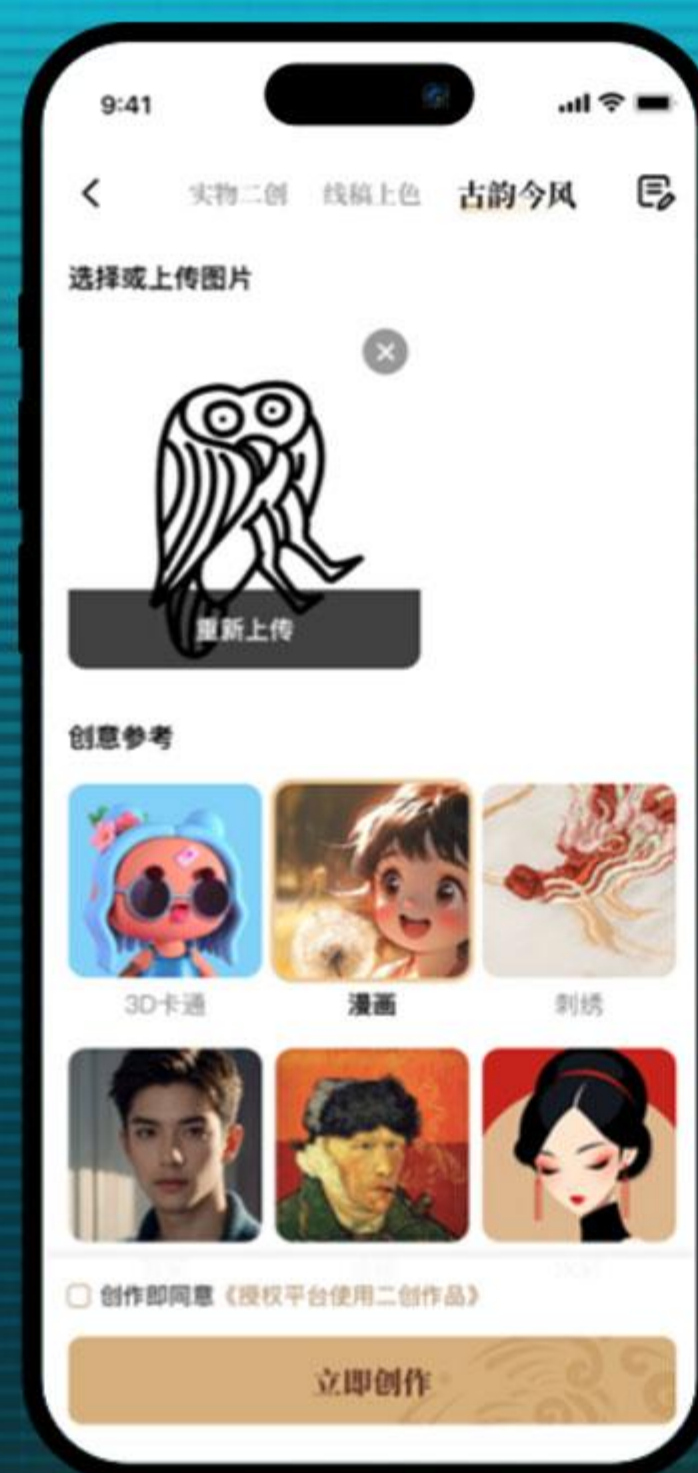
We are building the world's first large AI model specifically for Chinese historical and cultural heritage, featuring an AI voice guide function. By constructing a structured knowledge graph, we introduce the AI-driven intelligent cultural IP derivative creation functions for text, image, and audiovisual content, promoting the innovation, dissemination, and commercial development of cultural heritage.

The large model can perform high-precision extraction of cultural relic elements for artistic creation
The large model applied in fields such as merchandise, digital cultural products, and more, bringing cultural and museum IPs closer to the public.

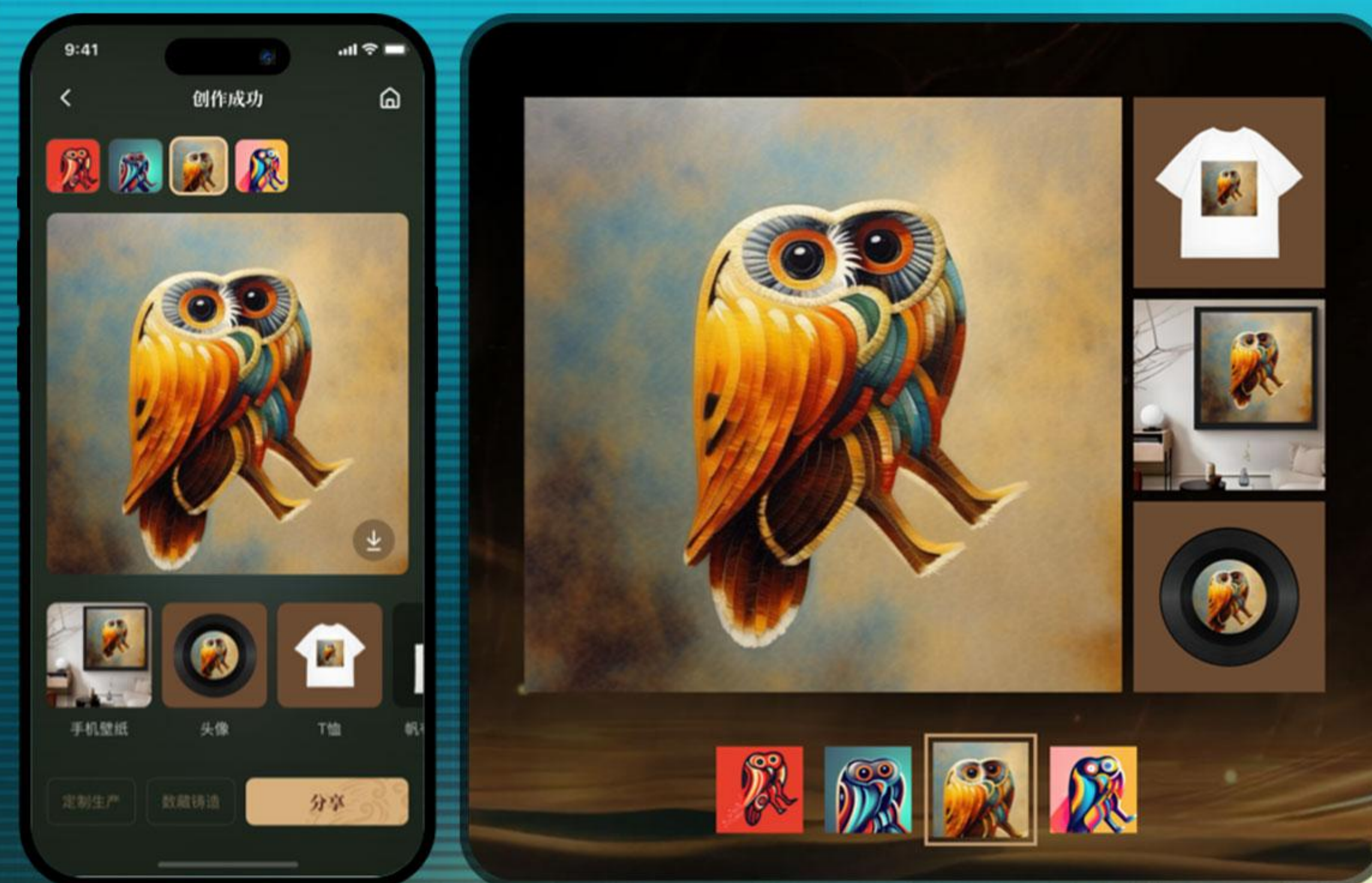
AI Extraction of Cultural Relic Elements



AI Derivative Re-Creation



Derivative Works Display and Expansion





Scan the QR Code to Download the App



Search for “SumHi” in your App Store

