

# Cloud: The Heart of European AI

iliad  
GROUP

 Scaleway



# Why Scaleway?

Championing European Values



Thousands  
of GPUs

Full service  
growing European  
CSP

+100 IaaS, PaaS,  
Public Cloud & AI  
Products

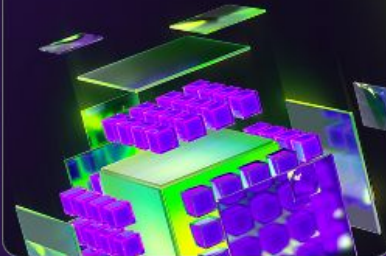
Fast growing  
with clear  
focus on  
open-source



100,000s Servers  
in multiple **Sovereign**  
& **Sustainable** Data  
Centers



Super-Computers  
to power future  
AI & HPC



# Cloud at heart

## Europe's leading AI computing power

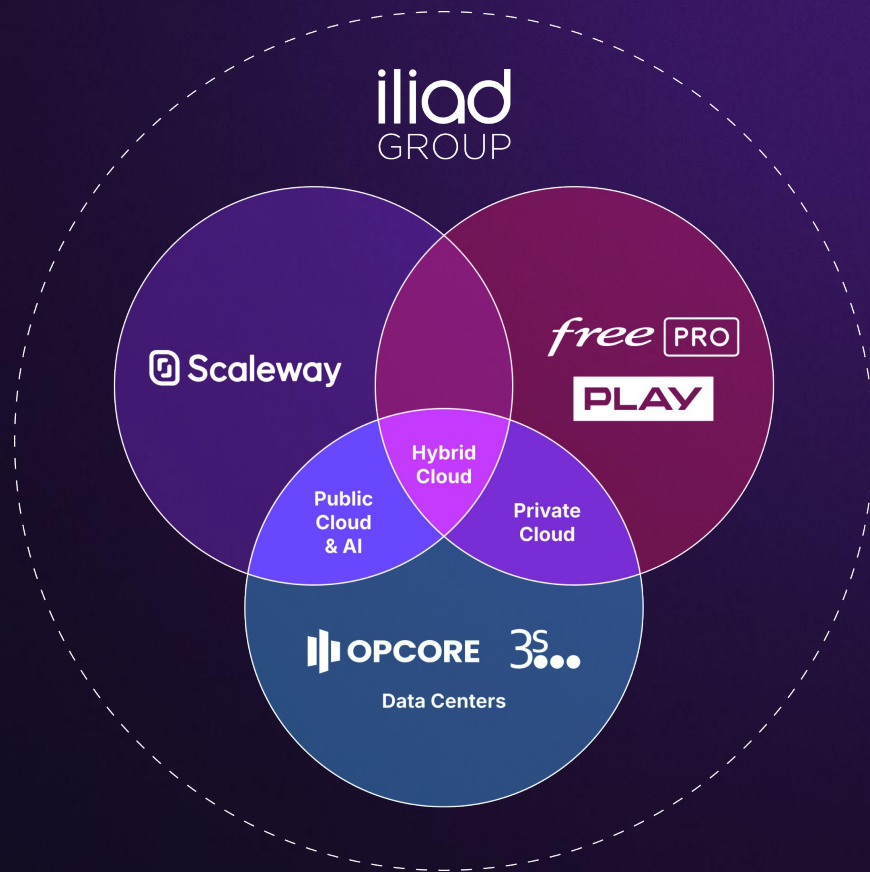
- Thousands of GPUs

## Sovereign and independent technologies

- Immune to non-European regulations
- Engaged in SecNum Cloud & HDS

## Responsibility and Sustainable

- Server life cycle
- Environmental impact calculator
- Energy efficient data centres





# The iliad Group

**+25 years**

History

**18 000**

Employees

**N°2**

Telecom operator in  
France

**50 M**

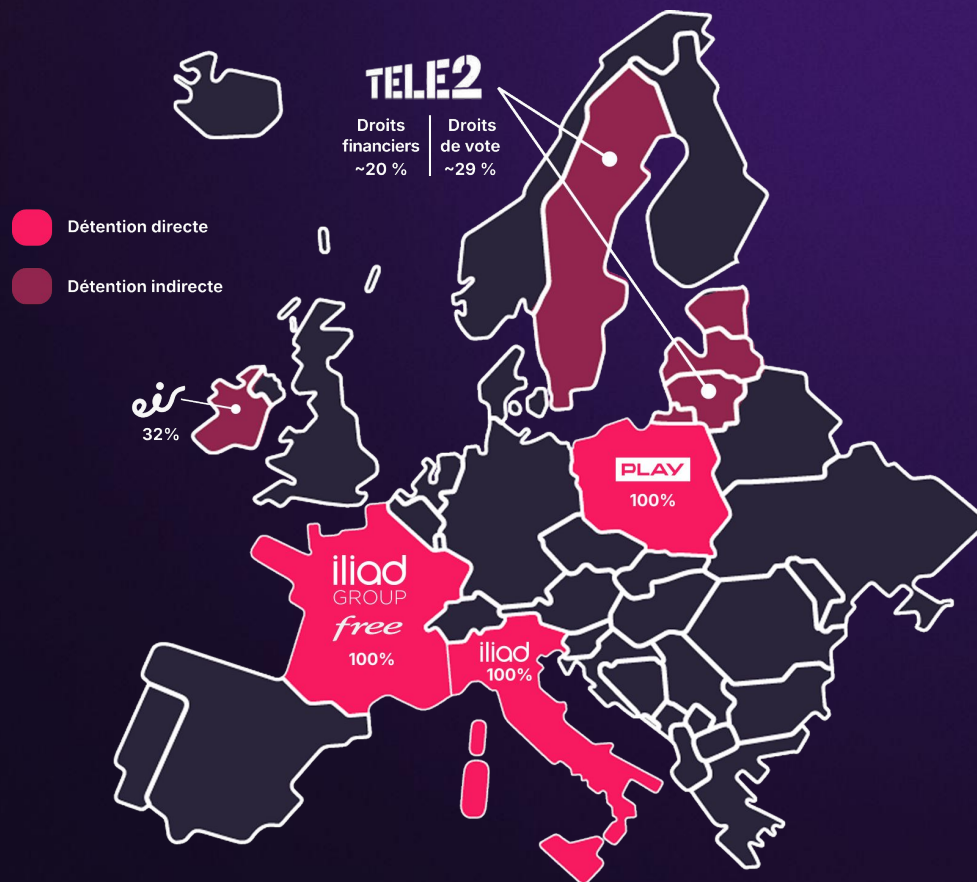
subscribers

**10.4%**

Revenue growth

**10 Mds**

turnover






# Expanding our GLOBAL presence



Scaleway offers a complete suite of **cloud & AI products** and **managed services**.

Delivering a **secure**, **sustainable** and **reliable** environment for the most demanding **clients** in **Europe**.

/ kyutai

 MISTRAL  
AI\_

Veepee 

france•tv

 BIOGARAN

 hachette  
LIVRE

 MINISTÈRE  
DE L'INTÉRIEUR  
*Liberté  
Égalité  
Fraternité*

 Hugging Face

 H

# Our unique value proposition: Europe's best hyperscaler alternative

## BIG

### Covering every need



**Deep AI capability** and  
Leader in GPU capacity



**+100 Public Cloud Products**  
covering IaaS, PaaS and AI



**Full Private Cloud** offering  
with local Iliad Group  
implementations

## Open

### The European way



**Predictable & Transparent**  
pricing



**No vendor lock-in** and  
independent Tech



**Proximity-based**  
**partnerships** and customer  
experience

## Efficient

### Sovereign & Sustainable



Immune to  
**extraterritorial legislation**



**Responsible & Sustainable**  
by design



**Certified** at  
the highest level

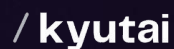


## Tailored for Enterprise Clients



### Acclaimed by our customers

Scaleway offers a reliable and robust ecosystem, supported by leading European customers.



# Championed by the European Parliament

## ***"Let's choose Scaleway"***

*"Real digital sovereignty means having **the capacity to scale and choose European critical technology**... We must address the real problems with American and Chinese companies and stop handing our data for them for free. We must put European companies first in our public procurement. Yes, you need to make an effort to choose European cloud, cyber and software but we can do that. **Let's choose Scaleway and ESET.**"*



Aura Salla, Member of European Parliament

# Scaleway passes milestone 1 of the **SecNumCloud** qualification



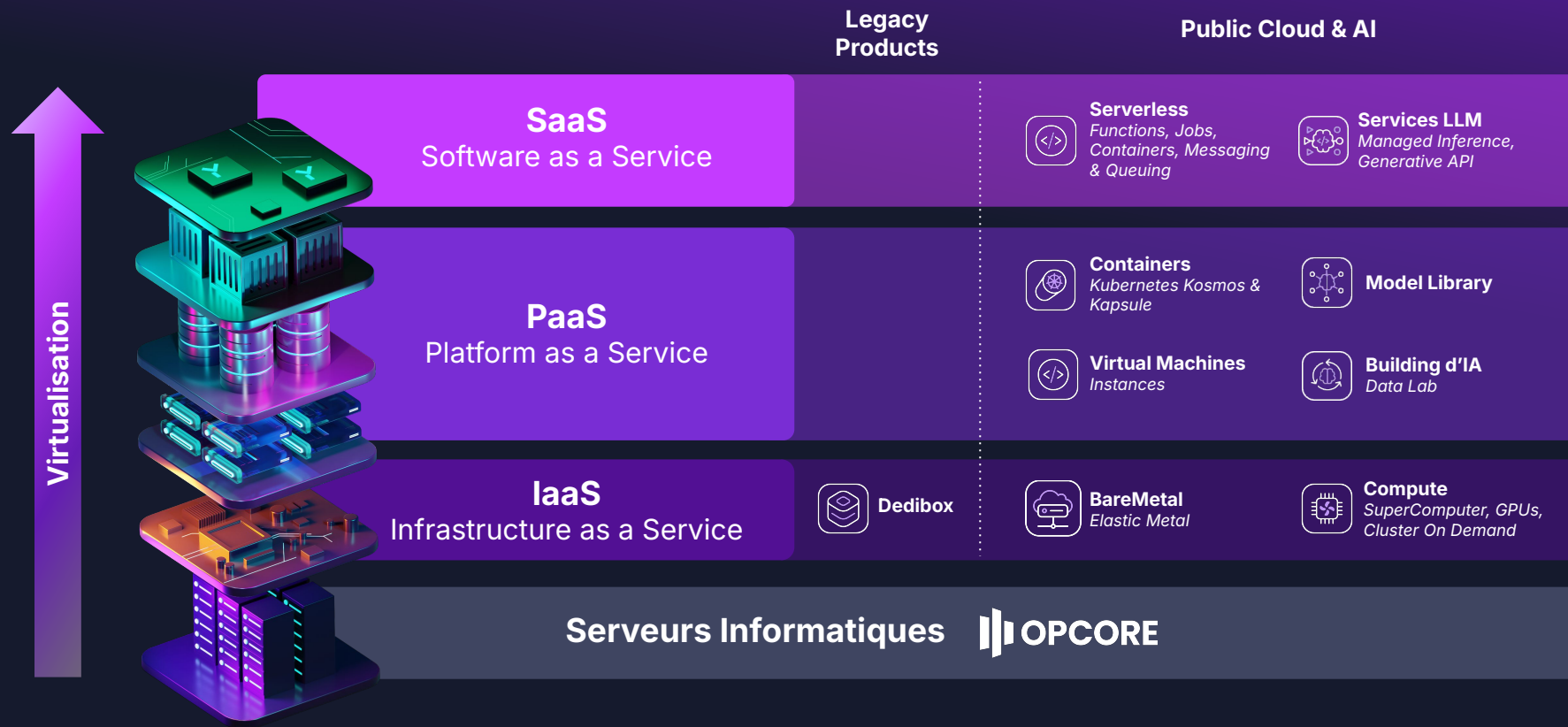
**Our transition to J1 marks a decisive step forward that confirms our commitment to achieving full qualification and meeting the needs of the most sensitive sectors.**

SecNumCloud, issued by ANSSI (the French National Cybersecurity Agency), is the benchmark label guaranteeing the highest standards of cloud security

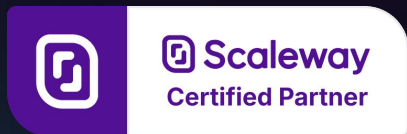




# Scaleway is focusing on IaaS & PaaS services



# A partner ecosystem for **all your needs**



- A dedicated network of technical experts committed to your project's success
- Certified for Scaleway Cloud & AI, enabled by our Solutions Architects
- Specialized Integrators and MSPs offering a wide range of expertise on Build and Run
- Proven track record in delivering successful projects across industries
- Turnkey SaaS solutions available on the marketplace, easily deployable via our platforms

ARTEFACT



# Scaleway for Startups

∞ Meta × 🤗 Hugging Face

- 4 month programme
- **50 000€ cloud credits**
- Dedicated CSM
- Get invited to exclusive events
- Networking opportunities.

Scaleway × NVIDIA  
INCEPTION PROGRAM

## An Exclusive VIP Experience for Startups

- 12 Month Programme
- **42 000€ cloud credits**
- Scaleway Foundation certification
- Increased Social Media Visibility
- Your support plan offered for 1 year.

Early	Growth
<ul style="list-style-type: none"><li>• 6 Month Programme</li><li>• <b>3 600€ cloud credits</b></li><li>• Personalised Support</li><li>• Exclusive Events</li><li>• Networking Opportunities</li></ul>	<ul style="list-style-type: none"><li>• 12 month Program</li><li>• <b>36 000€ cloud credits</b></li><li>• Personalized Support</li><li>• Exclusive Events &amp; Networking Opportunities</li><li>• Access Emerging Tech</li><li>• Leverage Iliad Ecosystem</li></ul>






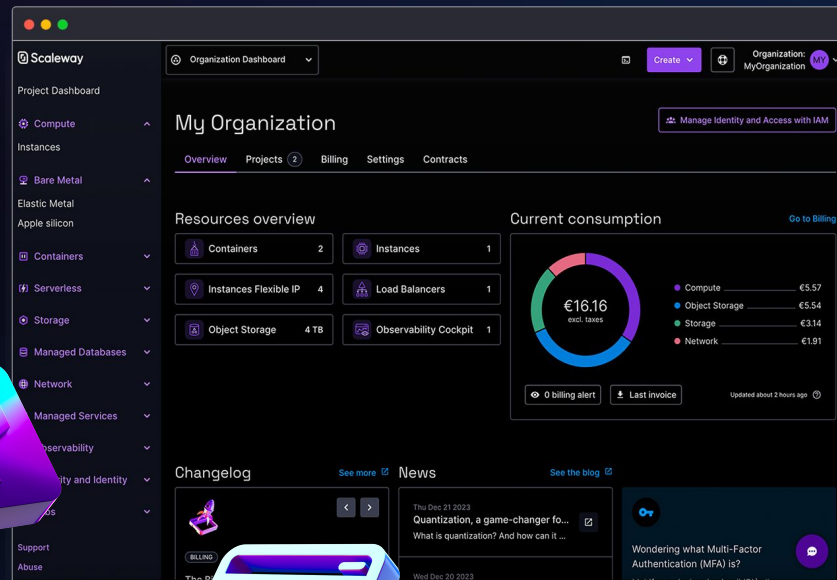


# The best user & developer experience

Our products are **intuitive**, **secure**, and can be **easily automated**. Deploying and managing workloads has never been more simple or intuitive.

## Included features

-  User-friendly **Console** and **CLI**
-  Integrated **IAM**
-  Exhaustive **Documentation**
-  Dev Tools compatible  
Including **Terraform**, **Pulumi**, **Ansible**...



# Keep control of your resources and expenses

Controlling costs has never been so important. Scaleway gives you the keys to scale and manage your resources efficiently and anticipate expenses.

## Included features

- ✓ Fully-managed **observability**
- ✓ **Real-time consumption** dashboards
- ✓ Billing **API endpoints**
- ✓ Transparent **pricing & calculator**



Using Cockpit, you can monitor your logs and metrics and applications from Scaleway, or from any other cloud provider

## Scaleway's Unique Values

# A whole dedicated team at your service

\*Available subject to subscription to the Support Gold plan.

\*\*Available subject to minimum monthly consumption

## Product Roadmap

Led by Product Managers and Engineering team continuously innovating to deliver cutting-edge features.

## Account Executive

Your trusted advisor, aligning the best solutions to your evolving business needs.

## Solution Architect

Your pre-sales interface designing tailored, scalable architectures to meet your unique technical needs.

## Customer Success Manager\*\*

Ensuring your long-term success with proactive guidance and support.

## Support

Assisting in the rapid resolution of issues to keep your operations running smoothly.

## Technical Account Manager\*

Your technical partner, providing expert insights and personalized optimizations.





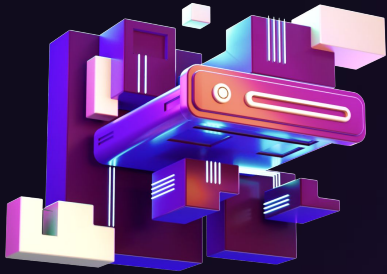
Thank you !



# Appendix



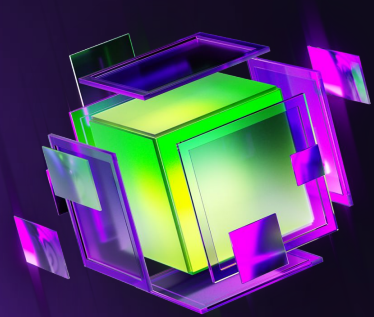
# Multiple needs, one ecosystem



**Bare Metal**



**Public Cloud**



**AI**

# Scaleway Bare Metal

## Dedibox

Next-generation, ultra-secure dedicated servers to help startups, SMEs, and large enterprises benefit from tailor-made adaptability and total environment customization

### Dedicated Servers



**Start**



**Pro**



**Core**



**Store**



**Dedibox VPS**



**Dedibox GPU**

## Elastic Metal

The reliability of Bare Metal, the elasticity of the cloud. Combine dedicated performance with flexible pricing and native integration into our complete cloud ecosystem

### Cloud Bare Metal



**Aluminium**



**Beryllium**



**Iridium**



**Lithium**



**Titanium**

## Apple Silicon

On-demand dedicated Mac mini with performance and efficiency of Apple silicon chip. The right alternative to a physical machine, accessible easily on remote desktop or SSH.



**Mac mini M1**



**Mac mini M2**



**Mac mini M2 Pro**





# Public Cloud - Compute

## Virtual instances

Fully integrated into Scaleway's cloud ecosystem, designed to offer the best price/performance ratio. Delivered in seconds, our Virtual Instances range is made to meet all your workload needs.



**Production-Optimized Instances**



**Workload-Optimized Instances**



**Cost-Optimized Instances**



**Learning Instances**



**GPU Instances**

## Containers

Move faster, scale your services and expand your capabilities with containerization offering you the automation and monitoring your infrastructure needs.



**Kubernetes Kapsule**



**Kubernetes Dedicated Control Plane**



**Kubernetes Kosmos**



**Container Registry**

## Serverless

Simplify application deployment by allowing developers to focus on writing code rather than managing servers. Automatically scale applications, ensuring optimal performance and cost-efficiency.



**Serverless Functions**



**Serverless Containers**



**Serverless Jobs**





# Public Cloud - Storage & Network

## Storage

Fully integrated into Scaleway's cloud ecosystem, designed to offer the best price/performance ratio. Delivered in seconds, our Virtual Instances range is made to meet all your workload needs.



**Object Storage**



**Scaleway Glacier**



**Block Storage**

## Network

Move faster, scale your services and expand your capabilities with containerization offering you the automation and monitoring your infrastructure needs.



**Virtual Private Cloud**



**Load Balancer**



**Public Gateway**



**IPAM (IP Address Manager)**



**Edge Services**



# Public Cloud - Data & Tools

## Data

---

 **Managed Database for PostgreSQL & MySQL**

 **Managed Database for Redis™**

 **Serverless SQL DB**

 **Managed MongoDB®**

 **Messaging & Streaming**


 **Distributed Data Lab**

## Business Applications

---

 **Domains and DNS**

 **Web Hosting**

 **Transactional Email**


 **IoT Hub**

 **Cockpit**

## Security & Organisation

---


 **IAM**

 **Secret Manager**

 **Cost Manager**

 **Environmental Footprint Calculator**

 **Key Manager**

 **Audit Trail**


## Developer Tools

---

 **API**

 **CLI**

 **Terraform**

 **SDK (inc Saagie)**



Products That Drive Value

# Scaleway AI Portfolio

## Clusters

---



Custom-build Clusters



On-Demand Clusters

## GPU Instances

---



AMD Instinct  
MI300 Series



NVIDIA Blackwell  
*Coming soon*



H100 PCIe



L40S



L4



P100

## Model-as-a-service

---



Managed Inference



Generative API

