

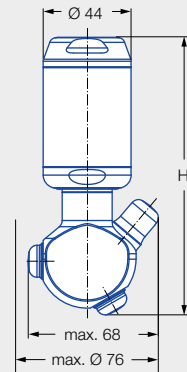
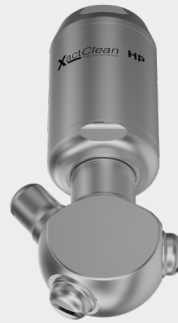
# Rotating cleaning nozzle XactClean HP

## Series 5S2/5S3



### Features:

- High impact and uniform cleaning due to specially developed flat fan nozzles
- Very reliable due to robust drive unit
- Available with a wide range of flow rates and spray angles
- Compatible with Lechler rotation monitoring sensor



Female thread

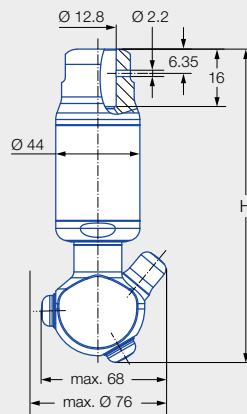


**ATEX version available on request**

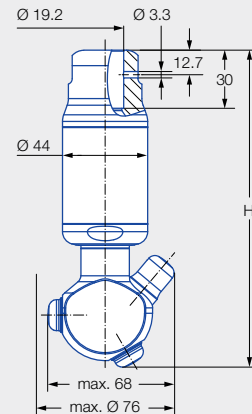
Series 5S2/5S3

### Nozzle dimensions [mm]

| Connection | Max. height H |
|------------|---------------|
| AF         | 146           |
| AH         | 149           |
| AL         | 139           |
| AN         | 139           |
| TF05       | 148           |
| TF07       | 164           |



1/2" slip-on connection  
Dimension of the slip-on connection according to ASME-BPE (OD tube)



3/4" slip-on connection  
Dimension of the slip-on connection according to ASME-BPE (OD tube)

| Max. tank diameter [m] | 0 | 1 | 2 | 3 | 4 | 5 | 6 | 7 | 8 | 9 |
|------------------------|---|---|---|---|---|---|---|---|---|---|
|                        |   |   |   |   |   |   |   |   |   |   |



**Cleaning efficiency class**  
4



**Max. temperature**  
95°C



**Installation**  
Operation in every direction is possible



**Bearing**  
Double ball bearing



**Material**  
Stainless steel 316L, stainless steel 632, stainless steel 316, PEEK, PTFE, zirconium oxide, EPDM



**Recommended operating pressure**  
5 bar



**Filtration**  
Line strainer with a mesh size of 0.3 mm/50 mesh

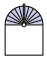






**Rotation monitoring**  
Sensor compatible, for information: See Page 221

**Function video**  
[www.lechler.com/xactcleanhp](http://www.lechler.com/xactcleanhp)  
Or scan the QR code.





| Spray angle                                                                                 | Ordering no. |          |          |          |        |                         |                         | Narrowest free cross section Ø [mm] | V̇ water [l/min]                    |     |      |                        | Max. tank diameter [m] |
|---------------------------------------------------------------------------------------------|--------------|----------|----------|----------|--------|-------------------------|-------------------------|-------------------------------------|-------------------------------------|-----|------|------------------------|------------------------|
|                                                                                             | Type         | Code     |          |          |        |                         |                         |                                     | p [bar] (p <sub>max</sub> = 15 bar) |     |      |                        |                        |
|                                                                                             |              | 3/8 BSPP | 1/2 BSPP | 3/4 BSPP | 1 BSPP | 1/2" Slip-on connection | 3/4" Slip-on connection |                                     | 2.0                                 | 5.0 | 10.0 | at 40 psi [US gal/min] |                        |
| 180°<br>   | 5S2.953.1Y   | AF       | AH       |          |        |                         | TF05                    | 1.7                                 | 25                                  | 40  | 57   | 8                      | 3.5                    |
|                                                                                             | 5S3.053.1Y   |          | AH       |          |        |                         | TF07                    | 2.0                                 | 41                                  | 65  | 92   | 13                     | 4.0                    |
|                                                                                             | 5S3.113.1Y   |          | AH       | AL       |        |                         | TF07                    | 2.0                                 | 60                                  | 94  | 133  | 18                     | 6.0                    |
|                                                                                             | 5S3.183.1Y   |          |          | AL       |        |                         | TF07                    | 2.0                                 | 89                                  | 141 | 199  | 28                     | 7.0                    |
|                                                                                             | 5S3.233.1Y   |          |          | AL       |        |                         | TF07                    | 2.0                                 | 111                                 | 175 | 248  | 34                     | 7.5                    |
|                                                                                             | 5S3.263.1Y   |          |          | AL       | AN     |                         | TF07                    | 2.0                                 | 135                                 | 213 | 301  | 42                     | 8.0                    |
| 180°<br>   | 5S2.954.1Y   | AF       | AH       |          |        |                         | TF05                    | 1.7                                 | 25                                  | 40  | 57   | 8                      | 3.5                    |
|                                                                                             | 5S3.054.1Y   |          | AH       |          |        |                         | TF07                    | 2.0                                 | 41                                  | 65  | 92   | 13                     | 4.0                    |
|                                                                                             | 5S3.114.1Y   |          | AH       | AL       |        |                         | TF07                    | 2.0                                 | 60                                  | 94  | 133  | 18                     | 6.0                    |
|                                                                                             | 5S3.184.1Y   |          |          | AL       |        |                         | TF07                    | 2.0                                 | 89                                  | 141 | 199  | 28                     | 7.0                    |
|                                                                                             | 5S3.234.1Y   |          |          | AL       |        |                         | TF07                    | 2.0                                 | 111                                 | 175 | 248  | 34                     | 7.5                    |
|                                                                                             | 5S3.264.1Y   |          |          | AL       | AN     |                         | TF07                    | 2.0                                 | 135                                 | 213 | 301  | 42                     | 8.0                    |
| 270°<br>  | 5S2.955.1Y   | AF       | AH       |          |        |                         | TF05                    | 1.7                                 | 25                                  | 40  | 57   | 8                      | 3.5                    |
|                                                                                             | 5S3.055.1Y   |          | AH       |          |        |                         | TF07                    | 2.0                                 | 41                                  | 65  | 92   | 13                     | 4.0                    |
|                                                                                             | 5S3.115.1Y   |          | AH       | AL       |        |                         | TF07                    | 2.0                                 | 60                                  | 94  | 133  | 18                     | 6.0                    |
|                                                                                             | 5S3.185.1Y   |          |          | AL       |        |                         | TF07                    | 2.0                                 | 89                                  | 141 | 199  | 28                     | 7.0                    |
|                                                                                             | 5S3.235.1Y   |          |          | AL       |        |                         | TF07                    | 2.0                                 | 111                                 | 175 | 248  | 34                     | 7.5                    |
|                                                                                             | 5S3.265.1Y   |          |          | AL       | AN     |                         | TF07                    | 2.0                                 | 135                                 | 213 | 301  | 42                     | 8.0                    |
| 270°<br> | 5S2.956.1Y   | AF       | AH       |          |        |                         | TF05                    | 1.7                                 | 25                                  | 40  | 57   | 8                      | 3.5                    |
|                                                                                             | 5S3.056.1Y   |          | AH       |          |        |                         | TF07                    | 2.0                                 | 41                                  | 65  | 92   | 13                     | 4.0                    |
|                                                                                             | 5S3.116.1Y   |          | AH       | AL       |        |                         | TF07                    | 2.0                                 | 60                                  | 94  | 133  | 18                     | 6.0                    |
|                                                                                             | 5S3.186.1Y   |          |          | AL       |        |                         | TF07                    | 2.0                                 | 89                                  | 141 | 199  | 28                     | 7.0                    |
|                                                                                             | 5S3.236.1Y   |          |          | AL       |        |                         | TF07                    | 2.0                                 | 111                                 | 175 | 248  | 34                     | 7.5                    |
|                                                                                             | 5S3.266.1Y   |          |          | AL       | AN     |                         | TF07                    | 2.0                                 | 135                                 | 213 | 301  | 42                     | 8.0                    |
| 360°<br> | 5S2.959.1Y   | AF       | AH       |          |        |                         | TF05                    | 1.5                                 | 25                                  | 40  | 57   | 8                      | 3.5                    |
|                                                                                             | 5S3.059.1Y   |          | AH       |          |        |                         | TF07                    | 2.0                                 | 41                                  | 65  | 92   | 13                     | 4.0                    |
|                                                                                             | 5S3.119.1Y   |          | AH       | AL       |        |                         | TF07                    | 2.0                                 | 60                                  | 94  | 133  | 18                     | 6.0                    |
|                                                                                             | 5S3.189.1Y   |          |          | AL       |        |                         | TF07                    | 2.0                                 | 89                                  | 141 | 199  | 28                     | 7.0                    |
|                                                                                             | 5S3.239.1Y   |          |          | AL       |        |                         | TF07                    | 2.0                                 | 111                                 | 175 | 248  | 34                     | 7.5                    |
|                                                                                             | 5S3.269.1Y   |          |          | AL       | AN     |                         | TF07                    | 2.0                                 | 135                                 | 213 | 301  | 42                     | 8.0                    |

NPT thread available on request.

The maximum tank diameter applies to the recommended operating pressure and is meant as a recommendation only.  
The cleaning result is also affected by the type of soiling.

Compressed air should be used for dry blowing for a short time only. Operation above the recommended operating pressure has a negative impact on the cleaning result and wear.

#### Information about slip-on connections

- Pin made of stainless steel 316L supplied (Ordering no.: 095.022.1Y.50.60.E [TF07], 095.013.1E.05.59 [TF05]).
- Depending on the diameter of the adapter, the flow rate can increase due to a leakage between the adapter and the rotating cleaning nozzle.

|          |            |   |      |   |               |
|----------|------------|---|------|---|---------------|
| Ordering | Type       | + | Code | = | Ordering no.  |
| example: | 5S2.953.1Y | + | AF   | = | 5S2.953.1Y.AF |