



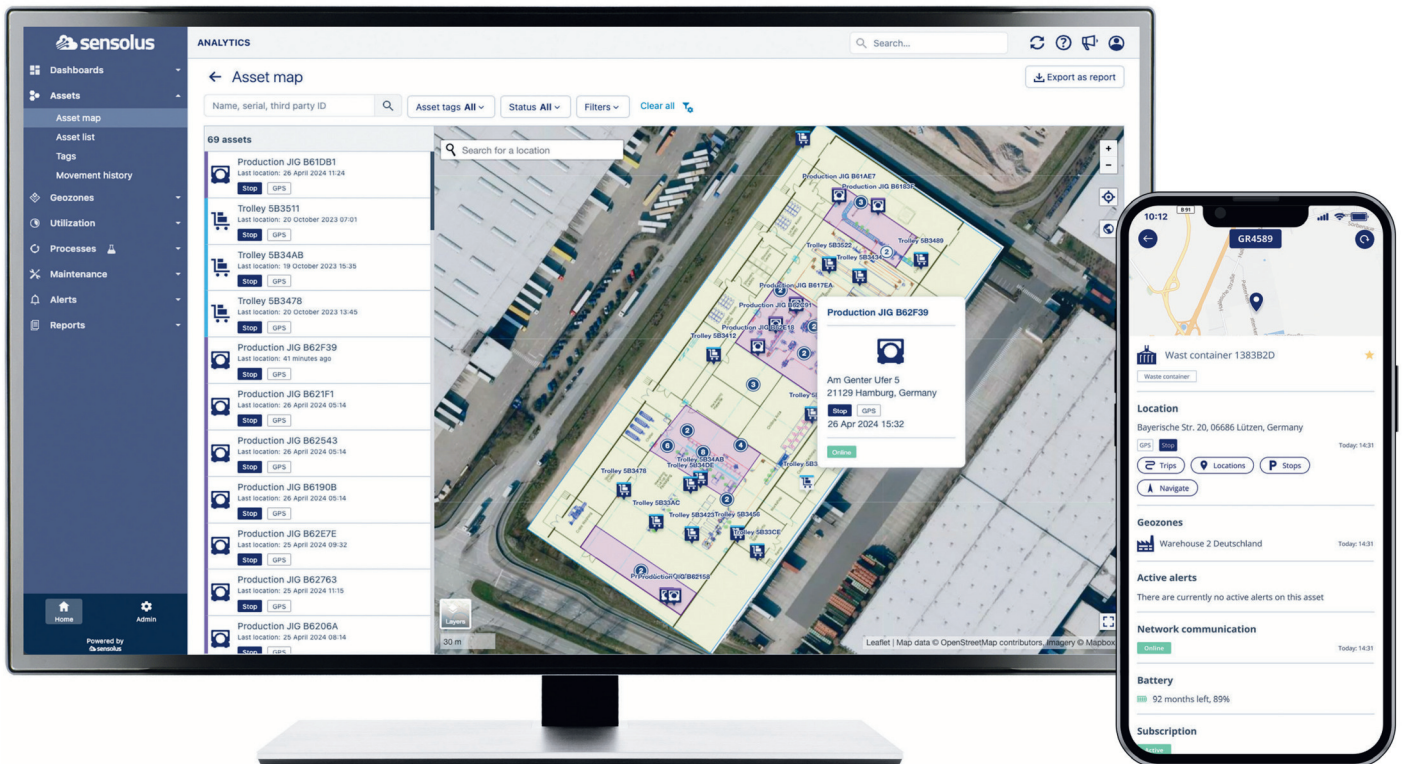
Your one stop shop for asset tracking

Connecting 300,000+ assets for more than
200 heavy industry customers since 2013

Sensolus is an end-to-end tracking solution, visualizing non-powered assets in the field. From containers to roll cages, and returnable packaging to waste containers - Sensolus enables customers (big or small) to optimize their fleet and reduce costs.

Simple to install and integrate, our technology is cost effective, scalable, and designed to last. Built to handle harsh conditions, these trackers boast remarkable durability, seamless remote configuration, and can be installed in minutes.

Easy to use, mobile friendly platform



Dashboards Geozones Alerts Reporting ERP integrations

Platform applications for every use case



Our solution is trusted by



Fully autonomous and rugged, long-lasting trackers



	TRACK 1110	TRACK 1141	TRACK 1130	TRACK 1101
NB-IoT connectivity	✓	✓	✓	✓
GPS localization	✓	✓		✓
Wi-Fi localization	✓		✓	✓
BLE indoor localization	✓	✓		✓
BLE sensors	✓			✓
Activity monitoring	✓	✓		✓
Orientation	✓	✓	✓	✓
Embedded temperature sensor				✓
Embedded shock sensor				✓
Replaceable battery		✓		✓
Battery <u>life time</u> (2points/day)	7 years	10 years	7 years	10 years

Bluetooth sensor technology

Know more than just the location of your assets. Connect the trackers to BLE sensors to monitor the fill-level of containers, know the temperature of goods during transport, or be alerted when the orientation of an asset changes, it all depends on what you need to make your operations go smoother.



Temperature



Fill level



Humidity



Charge detection



Kristoff Van Rattinche
CEO sensolus

At Sensolus we have developed the complete solution in-house, starting with the hardware, up to the final cloud application. This approach leads to the best possible user experience, highest quality of service, and the most favorable pricing over the life-time of the project.

We are in control of every single step of the complete solution, and this is why we can promise the best non-powered asset tracking solution in the market – perfectly optimized and configured to your use case.

Bluetooth tag tracking

Tracking low-cost assets

Bluetooth tag tracking is an affordable solution with an ultralight infrastructure that provides basic features for smaller, less expensive assets.

Use cases



Asset delivery confirmation

Know where your assets are picked up and delivered.



Inventory & flow optimization

Know when your assets arrive at a particular zone, and where to find them.

How it works



Tags

A small Bluetooth tag is attached to an asset and broadcasts its identity.



Scanning device

Tag scanners detect the tag and sends the location to the platform.



Platform

The platform locates the asset in the correct zone and turns this data into business insights.

“

AIRBUS

"While being accurate, quick to deploy, and energy-saving, it works great! The logistics data flow has significantly increased, providing more visibility for daily operations."

Maxime Saraiva,
IoT Technical Specialist