

*E-manufacturing*

SERVICES - 2024 FRANCE

# Contract Manufacturing & Laboratory

OVER 11 YEARS OF EXPERIENCE  
TO HELP YOU MAKE MORE MONEY



# About Us

Transform your cosmetics business with Emanufacturing.

The Emanufacturing laboratory was founded by the American Jenneine WILSON, an MIT engineer and founder of a Paris spa. She was trained in innovation creation and management at HEC Paris, in cosmetic formulation at EBI, and her company was integrated into the research department at LVMH Research on the Christian Dior site in Orléans. Her inspiring career shows her motivation and determination.

Winner of awards from Cosmetic Valley, the French Public Investment Bank BPI, Région Centre, ADEME, France Relance and the American Investment Bank Goldman Sachs, among others, this Innovative startup is delighted to help cosmetic industry entrepreneurs take their business to the next level.

Born from the realisation that many companies are not expanding due to a complex regulatory framework, the Emanufacturing team offers dynamic solutions for :

- Product formulation and brand creation,
- R&D, analyses and compliance documents for natural raw materials,
- Product Information Files (PIF),
- Efficacy tests and claims validation ,
- Manufacturing, packaging and the creation of macerations.

The Impacts : Better access to growth opportunities including distribution, pharmaceutical and manufacturing wholesale. Its a passion to support the professionalisation of the African natural cosmetic ingredients sector and promote their imports and exports.

Take the path of excellence. Let's create the cosmetics industry of tomorrow. Choose Emanufacturing to support your projects and help you make more money.

EMANUFACTURING LABORATORY  
COMPLIANCE - SAFETY - GROWTH





# Boost Your Brand

Emanufacturing helps you win. Together, we will determine your innovation, target market, concept and prices, regardless of your market (Africa, Europe, United States, etc...).



# NATURAL INGREDIENTS

EMANUFACTURING PREPARES THE DOCUMENTATION & COMPLIANCE OF YOUR RAW MATERIALS CREATING OPPORTUNITIES FOR GROWTH.



**SAFETY DATA SHEETS (SDS)**



Fiches techniques

**TECHNICAL DATASHEETS**



**CERTIFICATES OF ANALYSIS**



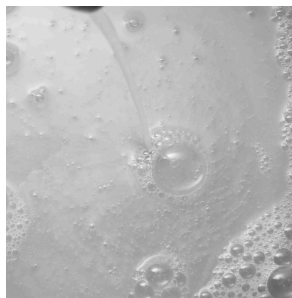
# CUSTOM FORMULATION

WHETHER IT'S HAIRCARE, SKINCARE, A FRAGRANCE, OR A NATURAL EXTRACT, EMANUFACTURING DEVELOPS TAILOR-MADE PROTOTYPES, TO GIVE YOU A COMPETITIVE EDGE.

AMONG THE MOST POPULAR ARE:



**SERUMS**



**LOTIONS**



**CREAMS**

# SKINCARE

Take advantage of our technical expertise to formulate innovative products that meet your customers' needs.



## FACE & BODY



## MICELLAR WATER & SUNSCREEN



## IMPERFECTIONS & BLEMISHES



# HAIRCARE

Whether its for straight, textured or curly hair, or for the scalp, Emanufacturing develops high-performance, personalized treatments.

## MASK & LEAVE IN



## SHAMPOO & CONDITIONER

## HAIR GROWTH & STYLING

# PERFUMES



## FRAGRANCE DEVELOPMENT

For Men Women & Unisex

## DILUTIONS

Bring us your extracts to mix with alcohol, binder and color, for long-lasting fragrances.

## ROOM FRAGRANCES

Emanufacturing determines your Classification, Labelling, Packaging CLPs and risk statements.

## CANDLES

Entrust us with your home and body, scented-candle projects. We'll add a touch of well-being to your products.





# BIOCIDES & DISINFECTANTS



**COMPLIES WITH STANDARDS :**

Bactericide - Fungicide -  
Virucide

# EFFICACY TESTING



## **VALIDATE YOUR CLAIMS**

Emanufacturing conducts your “use tests” & collects biometrological data to validate the effectiveness of your cosmetics, so that you can market them with confidence.

# COMPLIANCE

Market your products and develop your business with peace of mind, thanks to Emanufacturing's reactivity and regulatory expertise. Furthermore, you can entrust us with your overseas market approvals.



## PACKAGING & CONTAINERS COMPLIANCE

Emanufacturing prepares your documents, compliance tests and labelling.



## RAW MATERIALS COMPLIANCE

Emanufacturing prepares your regulatory compliance documentation according to project requirements.



## PRODUCT INFORMATION FILE (PIF)

Emanufacturing compiles your PIF, assembles its components, validates its safety assessment and declares it on the European portal.

# TESTING & ANALYSIS

Contact our laboratory for the quality control and assessment of your raw materials and finished products.

## **FORMULATION STABILITY TESTING**

A must for ensuring product quality.

## **SKIN IRRITATION TESTS**

Can be performed under dermatological control and for sensitive skin if required.

## **PHYSICAL- CHEMICAL ANALYSIS**

Characterize your natural ingredients and finished products. We can also validate the absence of pesticides and heavy metals.

## **MICROBIOLOGY TESTING**

By challenging your preservative system, we guarantee consumer safety and regulatory compliance.



# Filling & Packing

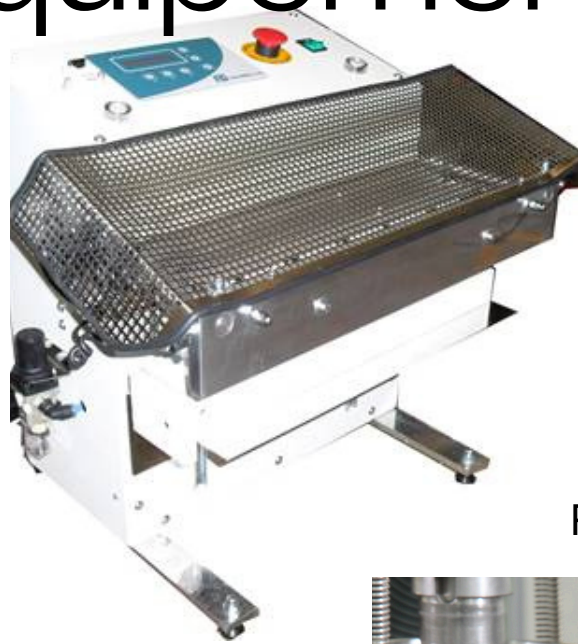
Bring us your in-house formulations in bulk. Emanufacturing ensures that your products are filled, labelled and packaged in accordance with strict hygiene standards, so that you can concentrate on what's important: their sales and distribution.



# Research and Development

Do you want to produce a plant extract, a prototype, or validate the non-toxicity of a raw material? Emanufacturing can realize your R&D, which facilitates the obtention of innovation and tax credits.

# Our Equipement



PLASTIC  
TUBE  
SEALING  
MACHINE

## FILLING MACHINES

VACUUM  
HOMOGENIZING  
MIXER WITH HEATED  
DOUBLE JACKET

100 L



- < 50 ML
- 50 ML TO 1 L

AUTOMATIC  
LABELLER  
FOR ROUND JARS  
AND BOTTLES



# GMP ISO 22716

Our facility in Orléans practices stringent hygiene, disinfection, and traceability of your production batches and strict quality control of your raw materials. We manufacture to international standards, and provide full documentation to facilitate export and your partnerships.



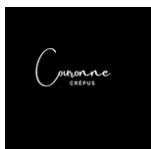




# Success stories

  
**REGENERATIS**  
FILLING & PACKING

NIOUMA  SHOP  
INGREDIENTS SDS  
& TECHNICAL DATA SHEET



FORMULATION, PIF  
& EFFICACY TESTING



FORMULATION, PIF, EFFICACY TESTING  
& MANUFACTURING

*Kann<sup>®</sup> Baby*  
FORMULATION DEVELOPMENT



KLEAN<sup>®</sup> - FORMULATION DEVELOPMENT,  
CERTIFICATION, ENREGISTRATION, MANUFACTURING

*E-manufacturing*

LABORATORY FRANCE

# Contact

30 rue du grands villiers - 45000 Orléans France  
Tel. / WhatsApp + 33 9 87 32 98 44  
[www.emanufacturing.fr/en](http://www.emanufacturing.fr/en)

U.S. Office : Gates Circle SE - Atlanta, GA 30316

