

Central Systems

Combi



Feature:

Cutting edge and pioneering the systems which accommodate the hot water demands and space heating. With other words "Combi systems".

Make the most of the solar energy and save money by reducing the oil demands and at the same time protect the environment by reducing the CO2 emissions.

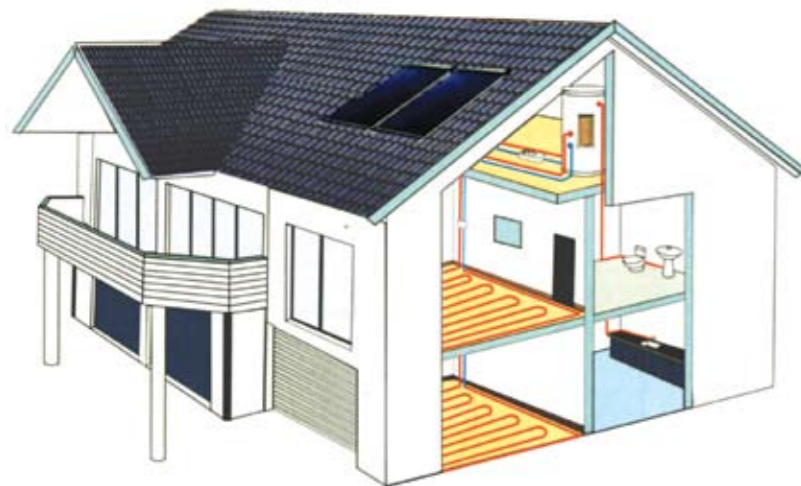
Operation:

Combi systems consist of the solar collector filed, the solar tank, the controller and other components.

The solar tank could be placed whenever at the house, while the collectors can harmonize on the roof, giving an excellent aesthetic effect.

The controller continuously check the temperature inside the tank and at the solar collectors and may be choose another heat supply source in case that the sun power is not enough. To heat the solar tank either the house. Furthermore protect the solar collectors from freezing or overheating.

A system with many applications. Ensure uninterruptedly supply of hot water or space heating, while the only thing that you should do is to enjoyed!



Solar Hot Water



Free hot water from sun
Enjoying it.



Solar Heaters Industry

St. Nikolaos - Bourtzi • 34100 • Evoia • Greece

Tel: 22210 53760 • Fax:22210 55460

Web: www.diana-solar.gr • e-mail: info@diana-solar.gr

Solar Heaters

Solar Collectors



D1K F
D1K T

Feature:

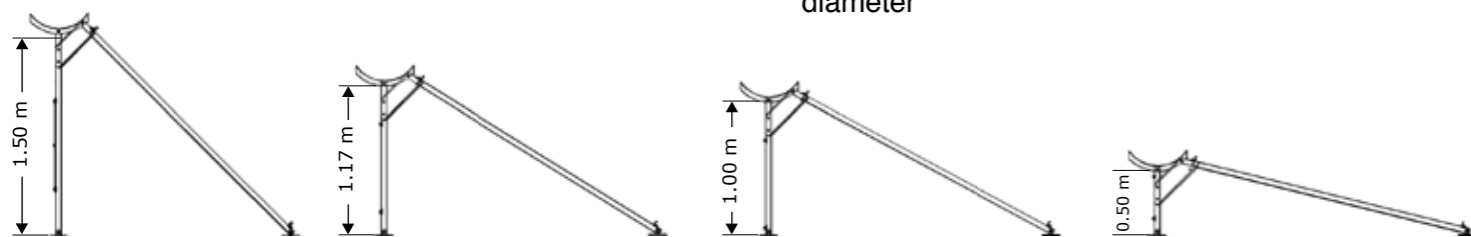
Aesthetic and Quality. That's the words which describe a DIANA Solar Heater. Made of best materials, guarantee according ISO 9001:2008 and it has CE label for the electrical parts.

Choose the "F" series if there is flat roof or "T" series for tile roof.

One product, a lot of abilities, many applications, like your demands.

Technical Characteristics:

- Water tank made of steel 2,5mm thickness, enameled (Glass) according DIN 4753
- Polyurethane insulation, 50mm thickness, density 50Kg/m³
- Outside jacket from anode aluminum for long life time.
- INOX electrical resistance, 4kW power with embody magnesium stick to protect from corrosion.
- Auxiliary heating supply from central heating net with spiral heat exchanger, 6m length and 3/4" diameter



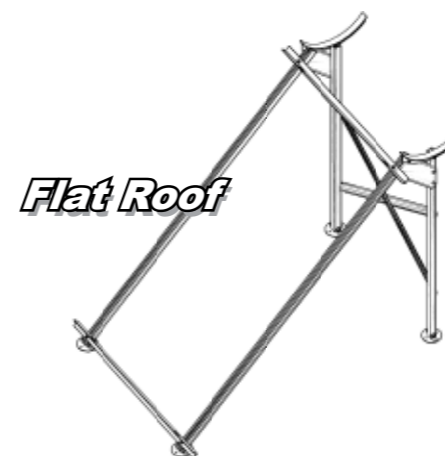
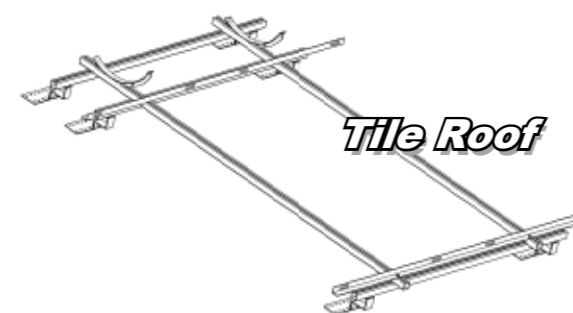
Problems and high limits? Not any more. With four different high to choose bring the solar heater at your limits.



D160E
D200E
D250E

Feature:

Technical surmount at every point. The advanced "E" series, be there where all the others be inferior. With absorbance $\alpha=95\%$ and emittance $\epsilon=5\%$ produce hot water even with low solar irradiation.



Technical Characteristics:

- Aluminum frame
- Backward and side insulation from rockwool 30mm thickness, $\lambda=0,033$
- Cooper fins, selective absorbance $\alpha=95\%$, ultrasonic welded at Cooper pipe $\Phi 10$ diameter.
- Cooper headers $\Phi 22$ diameter special design for minimum pressure drop.
- Mistlight securit glass, 3.2 mm Low Iron

