

**We design
radical
innovation.**

palomar

Timeless design



In the studio-house within an ancient Florentine palace, Palomar's creations come to life: small, everyday items with a touch of magic.

Palomar is a design company established in 2001 and based in Florence, Italy.

The headquarters are located in an ancient and noble building in the cool Oltrarno neighbourhood.

Design first.

The products we design and manufacture are radically innovative for the new meanings they aspire to offer to our everyday life and experience.

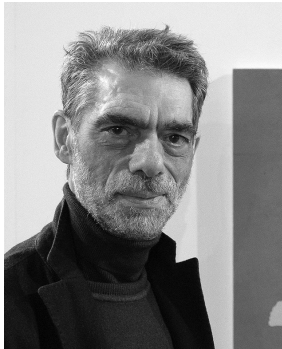
Through a research that can be described as “*post-digital*”, every project designed by Palomar represents a sort of countermelody to the over-whelming digital technology mainstream; a way of saying that new physical and analogic objects can coexist with the digital technology and its presumed imperatives, enriching our experience with a more human, more ironic and more attractive dimension.

Palomar creative team involves the best international designers.

The Designers



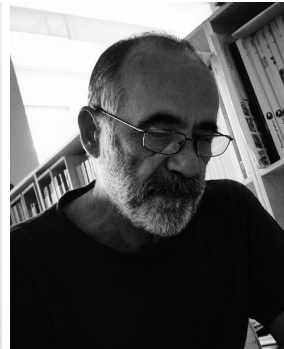
Alvino



Beppe Giacobbe



Francesco Toselli



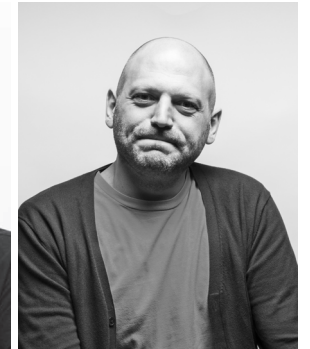
Guido Scarabottolo



Le Duo



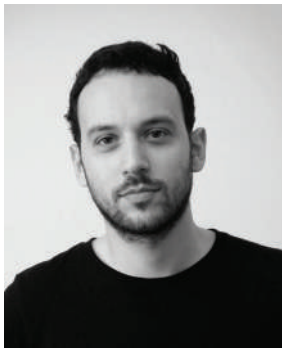
Martí Guixé



Odo Fioravanti



Paolo Dell'Elce



Pizzolorusso



RSW



Sebastian Bergne



Giulio Iacchetti



Margherita Melani

Design Collection 2023

The objects are simple but sophisticated.

They are designed to draw upon the user's creativity and personal experience. Appreciated by *design addicted people* and beloved among those who move with the times.

CRUMPLED CITY MAPS

Soft city maps for urban jungles

DEARWORLD GLOBE

The pinnable globe

DEARWORLD MAP

The pinnable map

PHIL THE BOTTLE

Tap water is cool

THE CITYRADIO

Sound adventures around the world

CITYGRAPHER

Iconic drawing stencil

Crumpled City Maps

Soft city maps for urban jungles

The Crumpled City™ Maps are the lightest maps in the world: indestructible, soft and waterproof, they can be crumpled, squashed and crushed into a ball.



DESIGN: PIZZOLORUSSO

SIZE: 87X58 CM

100% WATERPROOF

MADE IN ITALY

ALMOST 50 CITIES AVAILABLE! AMSTERDAM / ATHENS / BARCELONA / BERLIN / BORDEAUX / BOSTON / BRUSSELS / CAPE TOWN / CHICAGO / COLOGNE / COPENHAGEN / DUBAI / EDINBURGH / FLORENCE / HAMBURG / HELSINKI / HONG KONG / ISTANBUL / LAS VEGAS / LISBON / LONDON / LOS ANGELES / MADRID / MALLORCA / MELBOURNE / MIAMI / MILAN / MOSCOW / MUNICH / NEW YORK / NEW ZEALAND / OSLO / PARIS / PORTO / REYKJAVIK / ROME / ROTTERDAM / SAN FRANCISCO / SEOUL / SINGAPORE / STOCKHOLM / ST.PETERSBURG / SYDNEY / TAIPEI / TOKYO / TORONTO / VANCOUVER / VENICE / VIENNA / WARSAW / WASHINGTON / ZURICH.

DearWorld Globe

The pinnable globe

Dear World is a globe that makes you trace your personal travel experience. It invites you to mark the places you have visited and the ones that are on your wishlist!



DESIGN: PALOMAR

COMPONENTS: DEARWORD GLOBE + 50 PINS

SIZE: SMALL Ø 20 CM, MEDIUM Ø 30 CM

MODELS: WITH COUNTRIES NAMES/WITH CITIES NAME

PRINTED USING NON-TOXIC INKS ON CORDENONS WILD PAPER WITH 35% OF COTTON

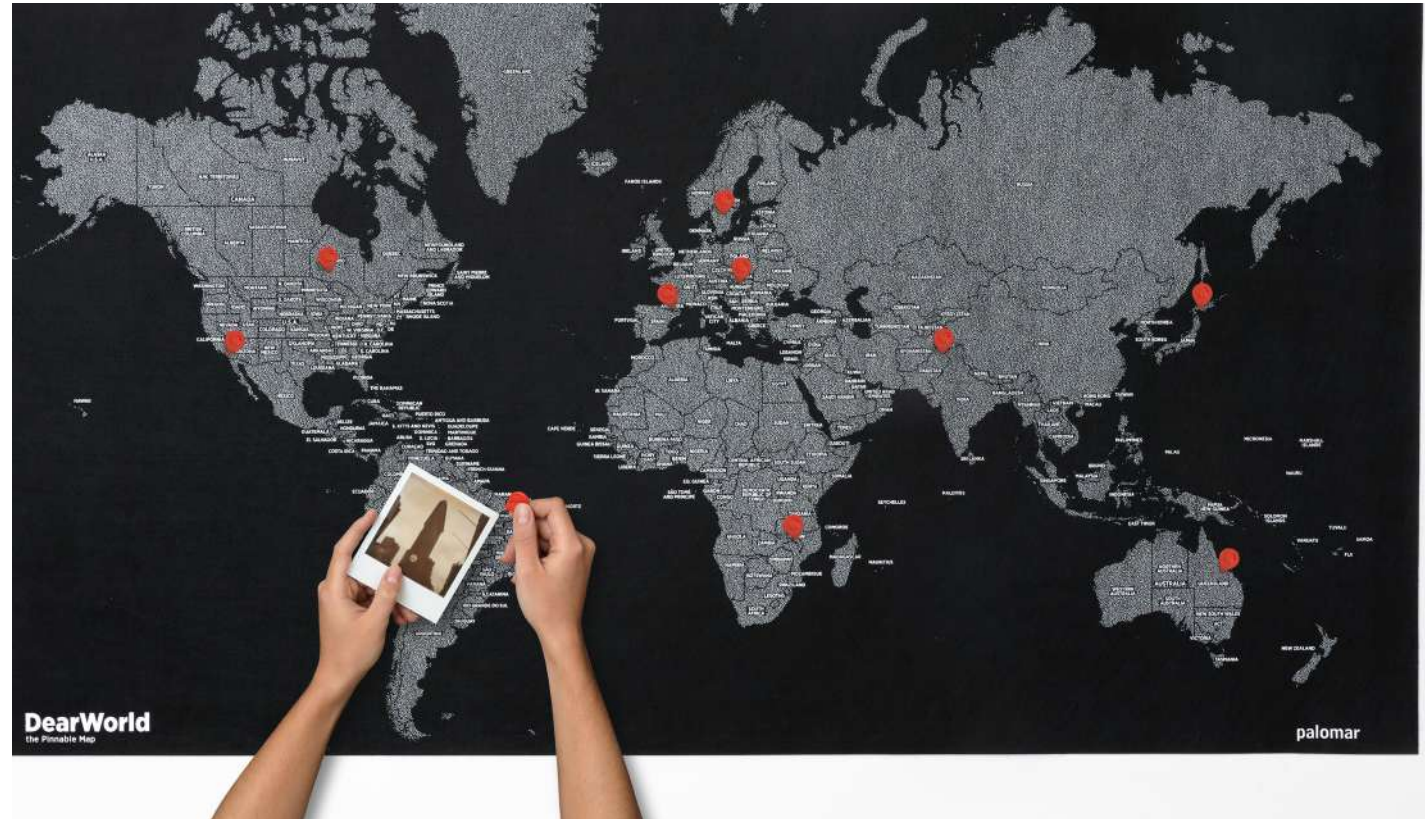
MADE IN ITALY

At first Globe looks *bi-dimensional*, as an atlas; in just a few seconds it turns into a *three-dimensional* globe.

DearWorld Map

The pinnable map

Pins, notes, personal comments, drawings, photos and souvenirs can be attached to the maps to create a travel log of an actual trip or the expedition of your dreams.



DESIGN: ALVVINO

SIZE: STANDARD 126X68 CM, MINI 77X48 CM

MATERIAL: POLYMER FELT

PRINTED USING NON-TOXIC INKS 100% RECYCLABLE

WASHABLE

MADE IN ITALY

The decision to use felt for the maps is an integral part of the project. Felt is a “warm” material that transmits intimacy. The tactile characteristics of felt transform the static nature of a map – a simple object to be looked at – into something new with which users can interact.

Phil the bottle

Tap water is cool

Using Phil the bottle is not only a responsible choice, because water is the contemporary gold and environmental pollution must be reduced.



DESIGN: PIZZOLORUSSO

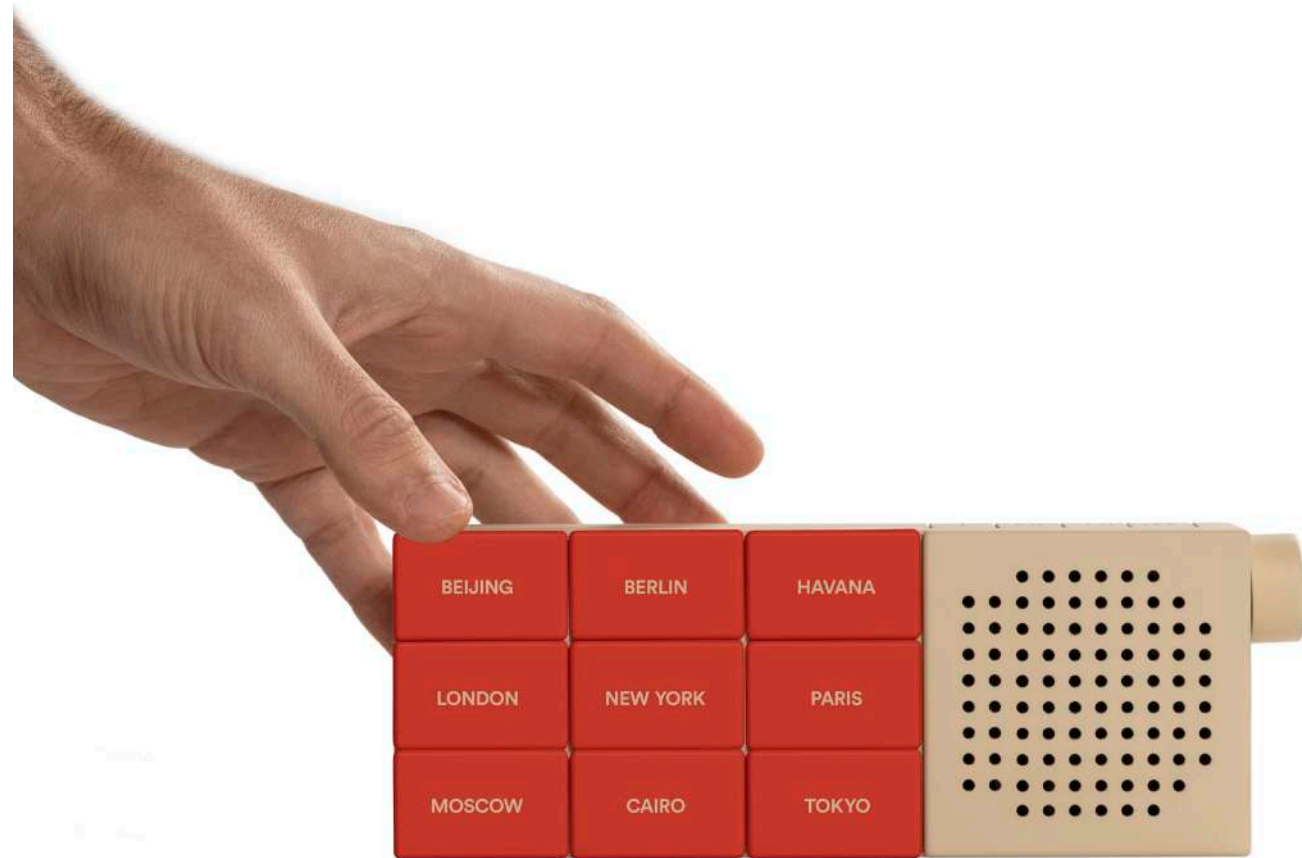
ALMOST 50 CITIES AVAILABLE! AMSTERDAM / ATHENS/ BARCELONA / BERLIN / BOSTON / COPENHAGEN / FLORENCE / FREIBURG / LISBOA / LONDON / MADRID / MILAN / NEW YORK / PARIS / ROME / TOKYO / ANYWHERE.

On the back of each bottle there is a list of the city's drinking fountain locations, where it can be filled; these available sources that are safe because water is highly monitored, are listed one by one with easy to find addresses.

The CityRadio

Sound adventures around the world

The CityRadio is different from all existing radios because it offers a listening experience organized by city.



DESIGN: PIZZOLORUSSO

COLORS: BLACK - POWDER BLUE / RED - SAND

SIZE: 21CM X 7,5CM X 3,7CM

TECHNICAL FEATURES: USB-C CONNECTOR FOR CHARGING,
LIVE RADIO, WIRELESS 5W SPEAKER, RECHARGEABLE LITHIUM-ION BATTERY 800 MAH,
VERSION BT 4.2, 9+9 MAGNETIC KEYS, AUTOMATIC BT CONNECTION TO THE DEDICATED APP

18 interchangeable keys with city names activate the radio stations of those cities in real time.

CityGrapher

Iconic drawing stencil

With Citygrapher you can transform marks into drawings.
The architectures and iconic symbols of a city land on a sheet of paper.



DESIGN: MARGHERITA MELANI

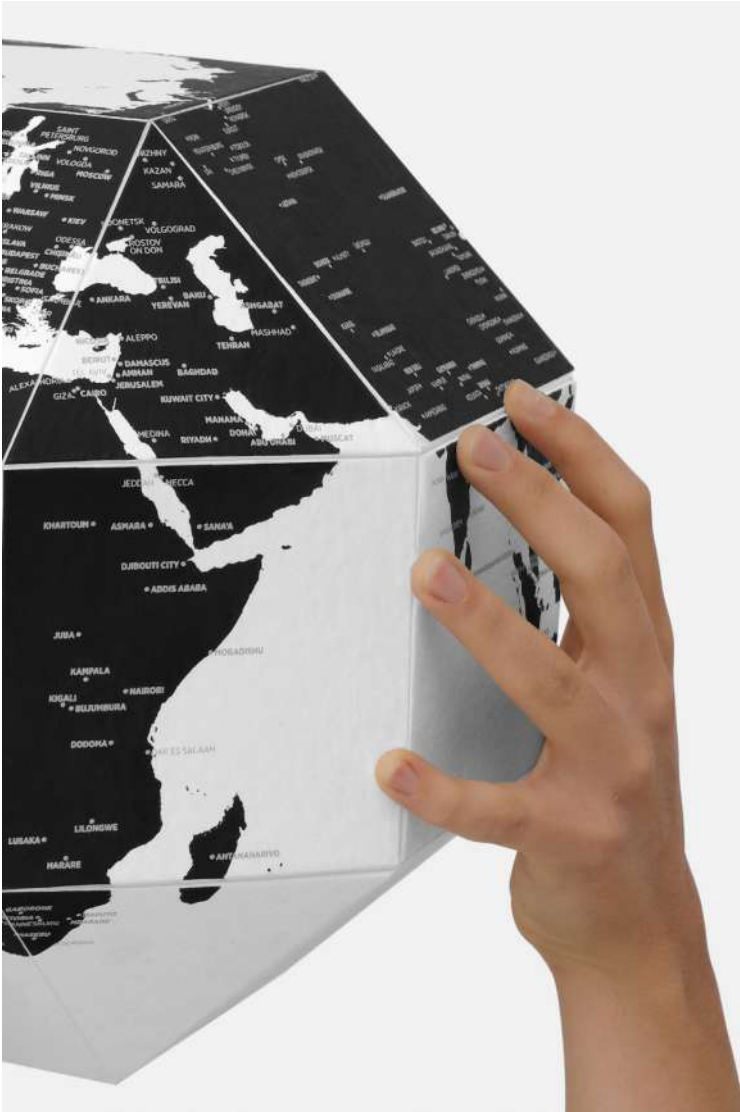
SIZE: 12,5CM X 20CM X 2MM

MATERIAL: LASER CUTTING ON PLEXIGLASS 2MM

MADE IN ITALY

The novelty of CityGrapher is to invite you to correctly draw the specific, unique and original architectures and urban icons of each city.

Made in Italy and Quality First.



Most of the products are made in Italy with the best quality materials.

The cartographic items are made of high quality paper (Cordenons Wild paper with 35% of cotton in the fibres), felt or not woven tissue, and printed using non-toxic inks.

International Certifications available.



The mark of
responsible forestry



Top sellers for top shops.

Our products are very good sellers with very high sellout. We help the shops to enhance the sales by providing them with display samples and showcase kits.



International Design Awards and Acknowledgments.

Palomar has won several international Design Awards every year since 2001.

ADI DESIGN INDEX

2022 The CityRadio

ADI DESIGN INDEX

2019 Phil the Bottle

**GERMAN DESIGN AWARD
WINNER**

2019 Lochness

BICYCLE BRAND CONTEST

2018 Lochness

SOLUTIONS

2018 The Monkey

**GERMAN DESIGN AWARD
WINNER**

2018 The Monkey

**GERMAN DESIGN AWARD
WINNER**

2018 Here

ADI DESIGN INDEX

2017 Here

ADI DESIGN INDEX

2017 The Monkey

**YOUNG&DESIGN AWARD
SPECIAL MENTION**

2017 Here

**GERMAN DESIGN AWARD
WINNER**

2017 Nello

**XXIV ADI COMPASSO D'ORO
PREMIO COMPASSO D'ORO**

2016 Lucetta

SOLUTIONS

2016 Nello

DESIGN PLUS

2016 Nello

ADI DESIGN INDEX

2016 Nello

EUROBIKE AWARD

2015 Lucetta

**GERMAN DESIGN AWARD
GOLD PRIZE WINNER**

2015 Lucetta

ADI DESIGN INDEX

2014 Lucetta

**XXIII ADI COMPASSO D'ORO
HONORABLE MENTION**

2014 Crumpled City

DESIGN PLUS

2014 Lucetta

SOLUTIONS

2014 Lucetta

DESIGN PLUS

2012 Crumpled City

**EUROPEAN CONSUMERS
CHOICE**

2012 Crumpled City

**EUROPEAN CONSUMERS
CHOICE**

2011 Galileo's Telescope

**XXII ADI COMPASSO D'ORO
HONORABLE MENTION**

2011 Zoomart

**XXII ADI COMPASSO D'ORO
HONORABLE MENTION**

2011 Galileo's Telescope

ADI DESIGN INDEX

2011 Crumpled City

DEZEEN BOOK OF IDEAS

2011 Crumpled City

PRIX LES DECOUVERTES

2011 Crumpled City Junior

ADI DESIGN INDEX

2010 Galileo's Telescope

ADI DESIGN INDEX

2009 Zoomart

Thanks.

To receive more info about our collections
please contact our sales department at
sales@palomarweb.com

For press inquiries please contact our
communication department at
pressoffice@palomarweb.com



Palomar Srl
Palazzo Antinori Aldobrandini
Via de' Serragli, 9
50124 Firenze, Italy
Tel. 055212160
www.palomarweb.com

palomar