

Data Science driven

Macroeconomic Intelligence Platform

QuantCube MIP

Forecast tomorrow's economy with Big Data & AI



QUANTCUBE MIP

Macroeconomic Intelligence Platform

About QuantCube Technology

Founded in 2013, QuantCube Technology is a Fintech company specialized in macroeconomic nowcasting using AI and Big Data. We aim to provide financial institutions with actionable global macro smart data through QuantCube MIP, its macroeconomic nowcasting platform.

Robust macroeconomic and ESG nowcasting:

Supported by a team of 50+ data scientists for highly insightful-macroeconomic and ESG nowcasting based on 14 billion alternative data points.

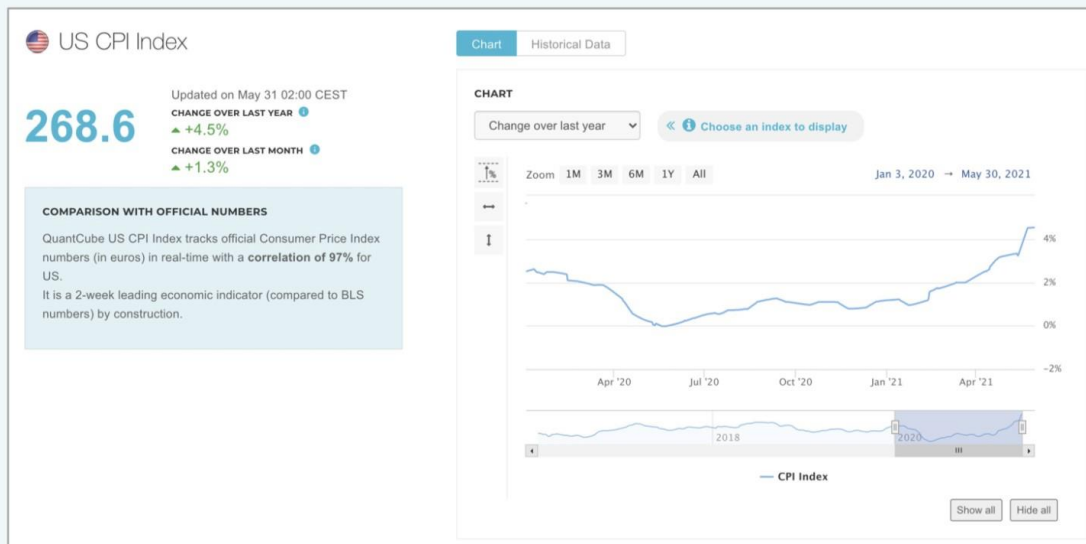
Big Data and AI:

Sophisticated AI technology and Big Data processing expertise specifically tailored for Financial Markets.

Satellite and Geolocation Data:

Strong expertise in decoding the insights from Geospatial and Geolocation Data.

QuantCube MIP (Macroeconomic Intelligence Platform)



QuantCube developed sophisticated macroeconomic forecasting techniques by leveraging its strong expertise in vast amounts of alternative data processing. With its sophisticated AI techniques and high performing computing machines, QuantCube MIP is designed to estimate major macroeconomic variables in real-time. All datasets are available via QuantCube MIP, API and FTP.

BIG DATA & AI TECHNOLOGY

Tailored for Financial Markets

Text Data

| | |
|-------------------|---------|
| Social Media Data | 8.5 bn |
| Financial Blogs | 184 mil |
| News Articles | 82 mil |
| Job Openings | 114 mil |

Geospatial Data

| | |
|--------------------------------------|---------|
| Earth Observation/ Satellite Data | 2.4 mil |
| Atmospheric Data | 0.8 mil |
| Radar Data | 0.6 mil |

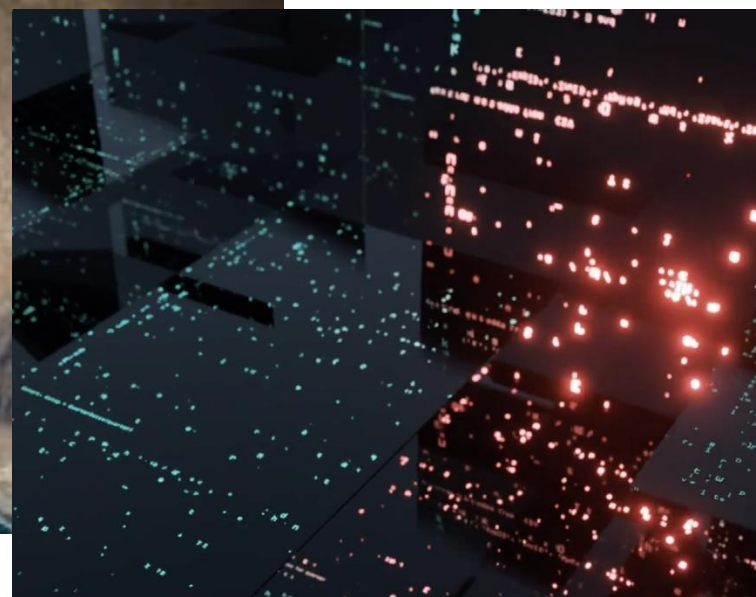
Geolocation Data

| | |
|------------------|---------|
| Shipping Traffic | 378 mil |
| Flight Traffic | 104 mil |
| Cell Phone Data | 2.5 bn |

Structured Data

| | |
|--------------------|---------|
| Corporate Loans | 1.3 bn |
| Goods Prices | 1.6 bn |
| Real Estate Prices | 208 mil |

- **14 billion+ global datapoints:** processed daily for robust nowcasting using QuantCube's AI technology.
- **Dynamic alternative data processing:** leveraging QuantCube's unique technology that enables vast data processing for actionable predictive analysis.
- **Natural Language Processing (NLP):** highly sophisticated multilingual Natural Language Processing expertise to analyse various economic and financial texts.
- **Strong machine learning technique:** to analyse structured data such as marine traffic and meteorological data.
- **Collaboration with European Space Agency (ESA) and French Space Agency (CNES):** direct access to ESA's Geospatial Data and direct access to 200+ researchers in computer vision via CNES.



GLOBAL MACRO DATA

Macroeconomic Intelligence Nowcasting

GDP Nowcast

- Nowcasting of current real GDP year-on-year growth. Available in local currency.
- Coverage: US, China, UK, Eurozone, France, Germany, Spain, Italy, Japan, Canada
- Historical data: since 2011 (Canada since 2012, China since 2013)
- Frequency: daily, monthly, quarterly

GDP Leading Growth

- Detect real-time economic growth movements ahead of the market
- (Same as above)

National Employment

- Track evolution of official and live job openings. Aggregated at the country level.
- Effective for monitoring real-time unemployment
- Coverage: US, China, France
- Historical data: since 2015 for US, since 2017 for China and France
- Frequency: daily and monthly

Sectoral Employment

- Track evolution of official job openings number by sector in real time
- Effective for monitoring real-time unemployment
- Coverage: US, China, France
- Historical data: since 2015 for US, since 2017 for China, since 2018 for France
- Frequency: daily and monthly

Purchasing Manager's

- Track PMI in real-time and predict the prevailing direction of economic trends in manufacturing sector
- Available approximately 3 weeks in advance of official numbers
- Coverage: France and Germany
- Historical data: since 2014
- Frequency: daily, monthly

National Consumption

- Monitor private consumers' expenses in real-time at the country level
- Available approximately 3 months ahead of official numbers
- Coverage: US, China, UK, Eurozone, France, Germany, Spain, Italy, Japan, Canada
- Historical data: since 2012
- Frequency: daily and monthly

Sectoral Consumption

- Monitor private consumers' expenses in real-time at the sectoral level
- Coverage: US, China, Eurozone, Germany, Italy, Canada
- Sectors: Housing, Food and drinks, Hotel and restaurants, Recreation, Transport, ...
- Historical data: since 2012
- Frequency: daily and monthly

GLOBAL INFLATION DATA

Macroeconomic Intelligence Nowcasting

US CPI Inflation

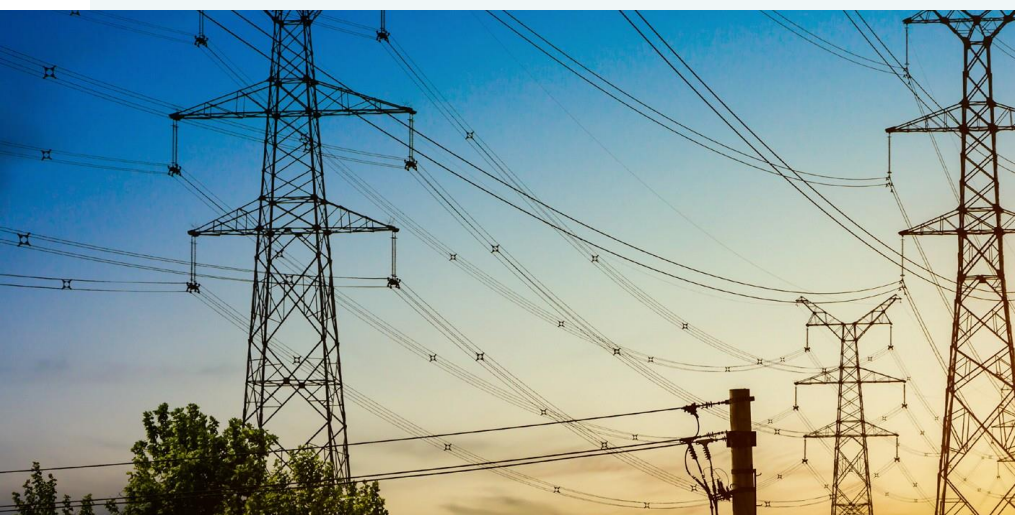
- A real-time indicator monitoring the current Consumer Price Index at the country level
- Available approximately 2 weeks in advance of official numbers
- Coverage: US
- Historical data: since 2015
- Frequency: daily and monthly

French CPI Inflation

- A real-time indicator monitoring the current Consumer Price Index at the country level
- Coverage: France
- Historical data: since 2010
- Frequency: daily and monthly

German CPI Inflation

- A real-time indicator monitoring the current Consumer Price Index at the country level
- Coverage: Germany
- Historical data: since 2015
- Frequency: daily and monthly



TOURISM AND AIR TRAFFIC DATA

Macroeconomic Intelligence Nowcasting

Tourism

- Track the evolution of hotel occupancy rates in real-time
- Available approximately 2 - 12 months ahead of economic indicators
- Coverage: Morocco, Tunisia, Egypt, Saudi Arabia, Bhutan, India, Nepal, Maldives, Sri Lanka, Cape Verde, Mauritius, South Africa, Tanzania
- Historical data: since 2018
- Frequency: daily, monthly

Air Traffic

- Track the evolution of air traffic in real-time
- Coverage: US, China, France, Germany, UK, Japan, South Korea, Italy, Spain, Turkey, Mexico, Morocco, Tunisia, Greece, Egypt, Cambodia, Vietnam, Hong Kong, South Africa, Saudi Arabia
- Historical data: since 2019
- Frequency: daily and monthly

Air Traffic Destination

- Track the evolution of air traffic by destination for each specific country in real-time
- Coverage: Morocco, Tunisia, Egypt, Saudi Arabia, Lebanon, India, Maldives, Sri Lanka, Cape Verde, Mauritius, South Africa, Tanzania
- Historical data: since 2019
- Frequency: daily and monthly

Air Traffic Origin

- Track the evolution of air traffic by origin for each specific country in real-time
- Coverage: Morocco, Tunisia, Egypt, Saudi Arabia, Lebanon, India, Maldives, Sri Lanka, Cape Verde, Mauritius, South Africa, Tanzania
- Historical data: since 2019
- Frequency: daily and monthly

Chinese Outbound Tourism

- A real-time indicator tracking the evolution of official Chinese tourist arrivals for several destinations worldwide
- Available approximately 1 – 4 months ahead of official numbers
- Coverage: Thailand, Japan, South Korea, US, Taiwan, Singapore, Malaysia, Hong Kong, Philippines
- Historical data: since 2015
- Frequency: daily and monthly

GLOBAL TRADE DATA

Macroeconomic Intelligence Nowcasting

International Trade

- Track the evolution of official external trade numbers in real-time
- Estimate levels of combined imports and exports approximately one month in advance
- Coverage: most G20 countries
- Historical data since 2010
- Frequency: daily and monthly

Commodity Trade

- Track imports/exports in value and volume of a commodity
- Index based on price or volume
- Coverage: Crude Oil, Iron Ore, Coal
- Historical data since 2010
- Frequency: daily and monthly

Automotive Exports

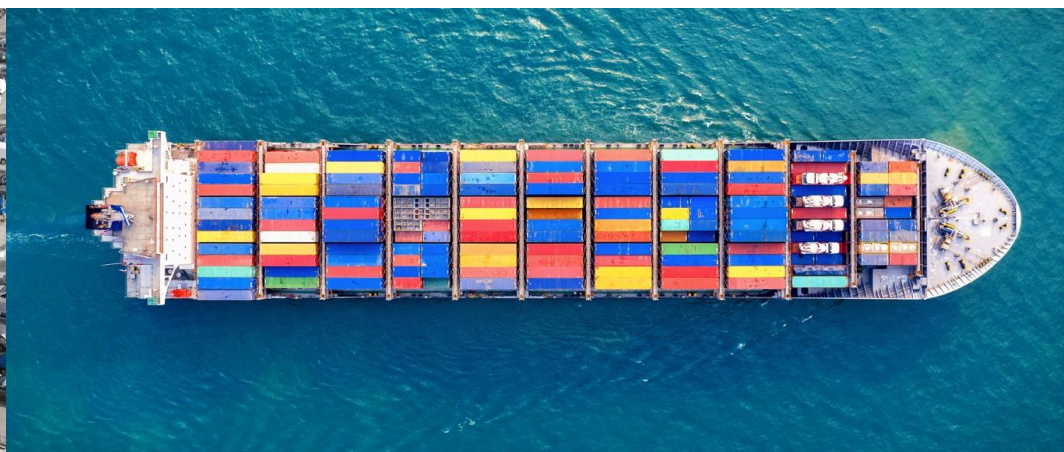
- Estimate the value of motor vehicle exports at the country level
- Available approximately 3 months in advance
- Coverage: Germany, China, Japan, South Korea, Europe
- Historical data since 2014
- Frequency: daily and monthly

Congestion

- Track maritime traffic in the vicinity of the world's major ports by measuring the number of vessels and their average waiting time in anchorage zones.
- Offer a timely assessment of the state of global supply chains.
- Coverage: Los Angeles & Long Beach, Rotterdam, Shanghai (new ports coming soon)
- Historical data since 2021
- Frequency: Daily

Crude Oil Risk Sentiment

- Provide information on the current risk perception in social media for crude oil market
- Capture short term risk and crude oil price trends
- Coverage: crude oil market
- Historical data since 2016
- Frequency: Daily - several hours before traditional news outlets



GLOBAL SATELLITE DATA

Macroeconomic Intelligence Nowcasting

Urban Growth

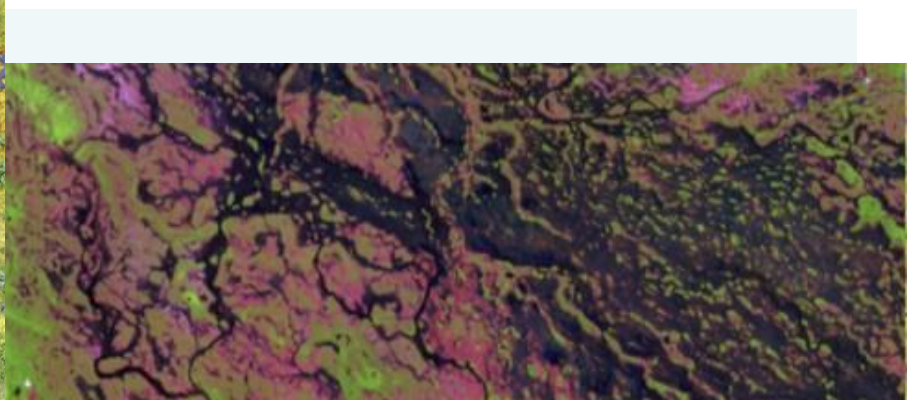
- Measure the urbanized surface and monitor its yearly evolution
- Track the activities and attractiveness of cities over time
- Coverage: US (available worldwide on demand)
- Historical data: since 2016
- Frequency: yearly

Water Stress

- Track the surface of multiple water sources with proprietary algorithm
- Monitor water surface fluctuations to pinpoint drought occurrence
- Coverage: US, India, Brazil, China, Indonesia, Russia, Taiwan (available worldwide on demand)
- Historical data: since 2015
- Frequency: monthly

NO2 Pollution

- Monitor emissions of multiple major pollutants
- Track human activity by comparing average NO2 produced over different regions
- Coverage: China, France (available worldwide on demand)
- Historical data: since May 2018
- Frequency: daily, monthly



Disclaimer

This document is provided solely for general informational purposes only and, while provided in good faith, does not purport to be comprehensive or include any representation, warranty, assurance or undertaking (express or implied). Nothing in this document is intended to be advisory or relied upon and no statement made shall have the effect to bind QuantCube, its affiliates or successors. Statements made herein are for illustrative purposes only and shall not be considered statements of fact, availability or reliability. Information provided herein has not been independently verified.

Furthermore, this document does not constitute an offer or invitation to partake in any transaction, or any other sale, purchase or recommendation of any securities or other product or service under any applicable laws. Any information contained in this document may only be used for your internal use, may not be reproduced or re-disseminated in any form and may not be used as a basis for or a component of any financial instruments, products or indices. Nothing in this document is intended to provide tax, legal, or investment advice. The recipient of this document understands and agrees that this document contains information of a confidential nature and is legally protected from disclosure to any third party apart from the intended recipient.

This document is provided on an “as is” basis and the recipient of this information assumes the entire risk of any use made of any information or statement contained herein. Historical data and analysis should not be taken as an indication or guarantee of any future availability, performance analysis, forecast or prediction. The views expressed regarding market and economic trends are subject to change at any time based on market and other conditions, and there can be no assurance that countries, markets or sectors will perform as expected. All statements made are subject to change and all products and information are subject to availability. No assurances are made in this document that all such products shall be available as stated and QuantCube reserves the right to change the availability and composition of any product referenced herein.

Investment involves risks, including market, political, liquidity and currency risks. In no event shall QuantCube or any person involved in the production of this document have any liability whatsoever for any direct, indirect, special, incidental, punitive, consequential (including, without limitation, lost profits) or any other damages in relation to, without limitation, the adequacy, accuracy, completeness or reasonableness of this document.

CONTACT

QuantCube Technology

15 Boulevard Poissonnière, 75002 Paris, France

Phone: +33 1 43 58 48 46

Email: info@quant-cube.com

www.quant-cube.com

