

2023-24
VIEWBOOK

UPPER



- 1. Bee Happy Garden
- 2. Ken Lepin Science & Health Sciences Building
- 3. WolfPack Recreation
- 4. Chappell Family Building for Nursing & Population Health
- 5. Culinary Arts Training Centre
- 6. OLARA Building
- 7. Clock Tower
- 8. Old Main
- 9. Outdoor basketball courts
- 10. The Reach
- 11. International Building
- 12. Arts & Education
- 13. Campus Activity Centre
- 14. House of Learning, TRU Library
- 15. North Tower student residence
- 16. Horticulture Gardens
- 17. Industrial Training & Technology Centre
- 18. Trades & Technology
- 19. Veterinary Technology
- 20. Transit Bus Loop
- 21. Tournament Capital Centre & Hillside Stadium
- 22. Open Learning
- 23. Cplul'kw'ten
- 24. Sustainability Office
- 25. Future Students Welcome Centre
- 26. McGill Residence student residence
- 27. To East Village student residence

tru.ca/map

This is an artistic representation of some of the best spots on campus, but there are plenty more buildings, spaces and events to discover for yourself!

#myTRU



Welcome!

Weyt-kp <i>Secwepemctsin</i>	huniht'ih <i>Tsilhqot'in</i>	Dahooja <i>Southern Dakelh</i>
Yaw <i>Nuxalk</i>	k'althwá7acw <i>Lillooet/Státimcets</i>	way' <i>Syilx</i>
Hadih <i>Northern Dakelh</i>	ʔéx k'w'ń <i>Nlaka'pamux</i>	Tawnshi <i>Michif</i>
Atelihai <i>Inuit/Inuktitut</i>	Tansi <i>Cree</i>	Aniin <i>Ojibway/Anishinaabe</i>

Territorial Acknowledgment

Thompson Rivers University campuses are on the traditional lands of the Tk'emlúps te Secwépemc (Kamloops campus) and the T'exelc (Williams Lake campus) within Secwépemc'ulucw, the traditional and unceded territory of the Secwépemc. The region TRU serves also extends into the territories of the St'át'imc, Nlaka'pamux, Tsilhqot'in, Nuxalk, Dakelh, and Syilx peoples.

FIND YOUR TRU

TRU'S KAMLOOPS CAMPUS is located in the heart of the city, minutes from downtown, with a view of rivers and mountains. Adjacent to campus is the Tournament Capital Centre, which features an outdoor stadium, a field house and fitness centres, and an aquatic centre. The TRUSU UPASS includes an unlimited City of Kamloops transit pass, free use of the aquatic centre, and a discount on fitness centre passes.

You belong here.

Find what you've been looking for, with us. We are here so you can thrive.

140+ academic programs on campus

60+ online programs

#mytru our social media hashtag

3.5 hours by road or 1 hour by air from Vancouver

Best kept secret on campus

Scratch Café, where Culinary Arts students make affordable and delicious meals for eat in or take out

45 minutes to skiing, snowboarding and mountain biking at Sun Peaks

2000+ hours of sunshine per year

Two outdoor playing courts ready for your basketball or street hockey skills

1000+ residence spaces for students

13 spots to grab a snack or coffee on campus

Best view on campus

Visit the student lounge on the 3rd floor of Arts & Education

#1 in sustainability

TRU is currently the highest-rated university in the Association for the Advancement of Sustainability in Higher Education's global Sustainability Tracking, Assessment and Rating System (STARS)

60+ TRU Student Union clubs

YOUR CAMPUS SUPPORT NETWORK



DROP BY TRU'S WELLNESS CENTRE for a cup of tea, a heart-to-heart with welcoming staff, or a break in the technology-free quiet zone.

Choosing to attend university can be a big transition, and we're here for you every step of the way.

FIRST STOP: FUTURE STUDENTS OFFICE

Future Student Advisors and Qelmúcw (Indigenous) Future Student Advisors are here to help you navigate first steps.

They can help with:

- Finding the right program
- Choosing courses
- Applications
- Sponsorship support
- Scholarship opportunities
- Registering for courses
- Making your timetable
- Housing and student life
- General TRU information

\$500,000+ is available in entrance scholarships and bursaries each year.

[SEE PAGE 38!](#)



Book a virtual appointment

Ask us a question:
850 Sk'lep Trail | 250-828-5006 | tru.ca/future

HERE TO HELP YOU THRIVE

Meet your support network on campus.

Student Services:

- Wellness Centre
- Counselling
- Program Advising
- Academic Advising
- Accessibility Services
- Writing Centre
- Math Help Centre
- Early Alert
- Multi-faith Chaplaincy

Build your writing skills with 1-1 support from friendly tutors.

Find out more about student services at tru.ca/services

BEYOND THE CLASSROOM



VISIT THE TRU LIBRARY MAKERSPACE to try your hand at 3D printing, work with textiles, or learn how to use audio equipment.

Find out what you want to do—and maybe what you don't—before you graduate.

TAKE ADVANTAGE OF:

- Co-op
- Co-op Abroad
- WorkStudy
- Apprenticeship
- Study Abroad
- Internships
- Undergraduate research
- Service learning
- Field schools
- Professional practicums
- Volunteer opportunities

Work directly with a professor on research that matches your interests.

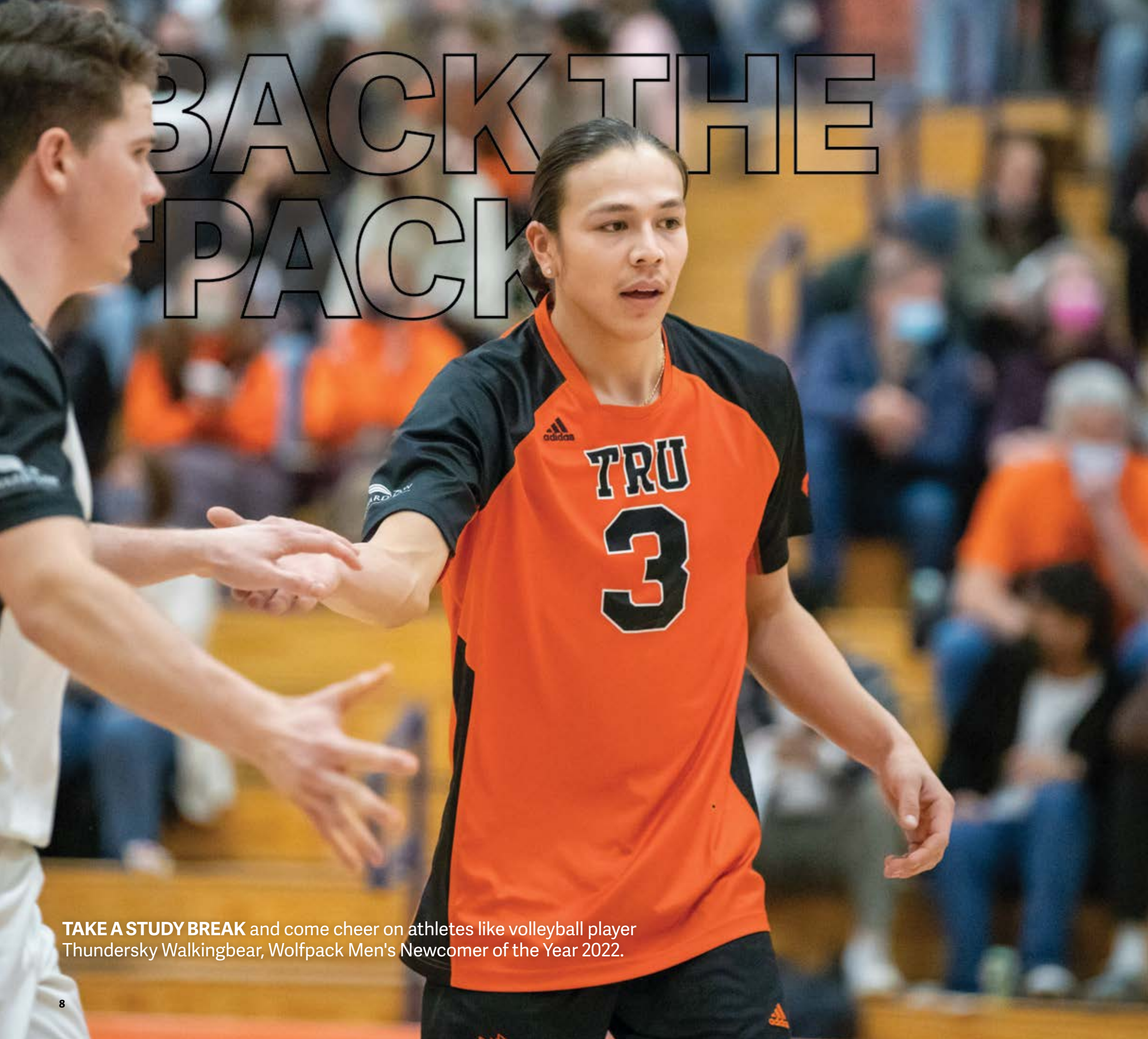
Many more at tru.ca/cel

We celebrate the diversity of TRU's students and offer many ways to get involved.

- Indigenous Awareness Week
- TRU Students' Union (TRUSU)
- Leisure Exploration Activity Program (LEAP)
- CFBX campus radio station
- The Omega student newspaper
- TRUSU Pride
- TRUSU Clubs
- TRU Job Fair
- Annual TRU Powwow
- IDays (International Days)
- Peer mentor programs

Hone your writing skills as a contributor to The Omega, TRU's independent student newspaper and news site.

BACK TO THE WOLFPACK



TAKE A STUDY BREAK and come cheer on athletes like volleyball player Thundersky Walkingbear, Wolfpack Men's Newcomer of the Year 2022.

WolfPack strengthens the bonds that make TRU a tight-knit community.

RECREATION

Join WolfPack Recreation for intramural team sports like dodgeball, badminton, volleyball, soccer, basketball and cricket.

Or take advantage of free drop-in sports like badminton, volleyball and pickleball, or join in on free fitness and yoga classes. Bootcamp, circuit, strength, stretch, slow flow...take your pick!

tru.ca/recreation

ATHLETICS

WolfPack student athletes and fans contribute to TRU's vibrant campus spirit.

Varsity teams compete at the U SPORTS level, and include basketball, soccer, swimming and volleyball. Club sports include baseball and cheerleading.

If you are interested in trying out for a team, fill out the recruitment form at

gowolfpack.ca



#FEARTHEWOLF

WEYTK, LE7 RE7 STSKITS'C

Services for Indigenous Students

THERE IS SUPPORT FOR YOU THROUGHOUT YOUR ENTIRE JOURNEY WITH TRU.

CPLUL'KW'TEN

kuh · plul · kuh · tin

At the Kamloops campus, your home away from home as an Indigenous student is Cplul'kw'ten, which means "The Gathering Place" in Secwepemctsin.

Wednesday Soup Circles

Soup Circle Wednesdays are a weekly opportunity to connect with fellow students and enjoy free food.

Academic Supports

If you need support on a particular subject, guidance on an essay or just a hand in navigating the world of academic journals, you can arrange to have a subject librarian work with you one-on-one. Tutoring can also be arranged. Computers are available if you simply want a quiet, familiar place to work.

Indigenous Mentor Program

This program makes the transition to university easier for new students, and provides training to more experienced students who wish to share their knowledge. Mentorship can range from one-on-one to group activities.

Elder in The House Program

The importance of learning from Elders spans across First Nations, Métis and Inuit cultures. Elders provide traditional consultation, conversation and guidance.

Counselling Services

TRU counsellors promote and support the career development, academic success and personal growth of all TRU students. Students can request to meet with an Indigenous counsellor who can provide professional services firmly rooted in Indigenous culture.

Health and Wellness

On-site counselling is offered three days a week at Cplul'kw'ten and all week long in Old Main. You'll also find a social support system to help enhance your sense of community at TRU, and advocates on important issues like discrimination and harassment. As well as potlucks, social events and other fun events in a culturally-safe space.

Meet with a Librarian

TRU Librarians are a great resource to get help with your research, and you can make an appointment online to meet and discuss your project.

Writing Centre

Book an appointment or drop in for feedback on your writing at any stage of the writing process—from assignment interpretation and idea generation, to sentence structure and grammar, and research and citation.

Math Help Centre

Find math and statistics help from TRU faculty and upper-level students, available during any of your courses at TRU.

 Service only available at Cplul'kw'ten

Find more information on services available on the TRU Kamloops and Williams Lake campuses:

Cplul'kw'ten on the Kamloops campus:

tru.ca/house5

The Gathering Place on the Williams Lake campus:

tru.ca/wl-gatheringplace

HELLO, IT'S GOOD YOU CAME.



Weytk –xwexwéytp!

Tina Matthew ren skwekst te Simpcw re st7é7kwen. I am from Simpcw First Nation, which means "People of the Rivers." Both of TRU's campuses are located in Secwépemc'ulucw, the traditional and unceded territory of the Secwépemc nation. I would like to thank our first house Tk'emlúps te Secwépemc, and our second house T'exelc (Williams Lake Band) for allowing us as guests in their beautiful territories.

The Indigenous Education office is the academic administrative department that supports TRU with implementing the TRC 94 Calls to Action, and UNDRIP, into all levels of the university. We are broad-based and work closely with TRU faculties specifically on indigenization and research efforts. We support Indigenous Student Development (Cplul'kw'ten House 5) to ensure students receive the spiritual, emotional, academic and financial supports to succeed. We host Indigenous cultural events throughout the year and we work closely with local Indigenous communities to ensure training needs are being addressed.

Tina Matthew,
Executive Director Indigenous Education

LOOK FOR THESE ON CAMPUS

SK'LEP

A coyote sculpture, created by artist John McEwen, sits atop the Brown Family House of Learning. His front left paw is outstretched to offer support to everyone on their educational journey.

TERRITORIAL MARKER

A territorial marker in Old Main recognizes the deep relationship between the Secwépemc and the traditional lands on which TRU sits. The marker was created by artists Rod and Ron Tomma and Mike Peters.

GET INVOLVED

KW'SELTKTNÉWS & INDIGENOUS CULTURE EDUCATION EXCHANGE

Kw'selktknéws is centered on providing TRU Indigenous undergraduate students and Indigenous peers from our partnering universities the opportunity to work with Indigenous faculty members, and access mentorship from Elders to write and publish peer-reviewed articles. TRU students are then eligible to participate in a three-week international mobility opportunity to travel, connect and engage with peers in Australia, New Zealand, and the United States with a focus on Indigenous knowledge and shared issues.

OMBAASHI NETWORK

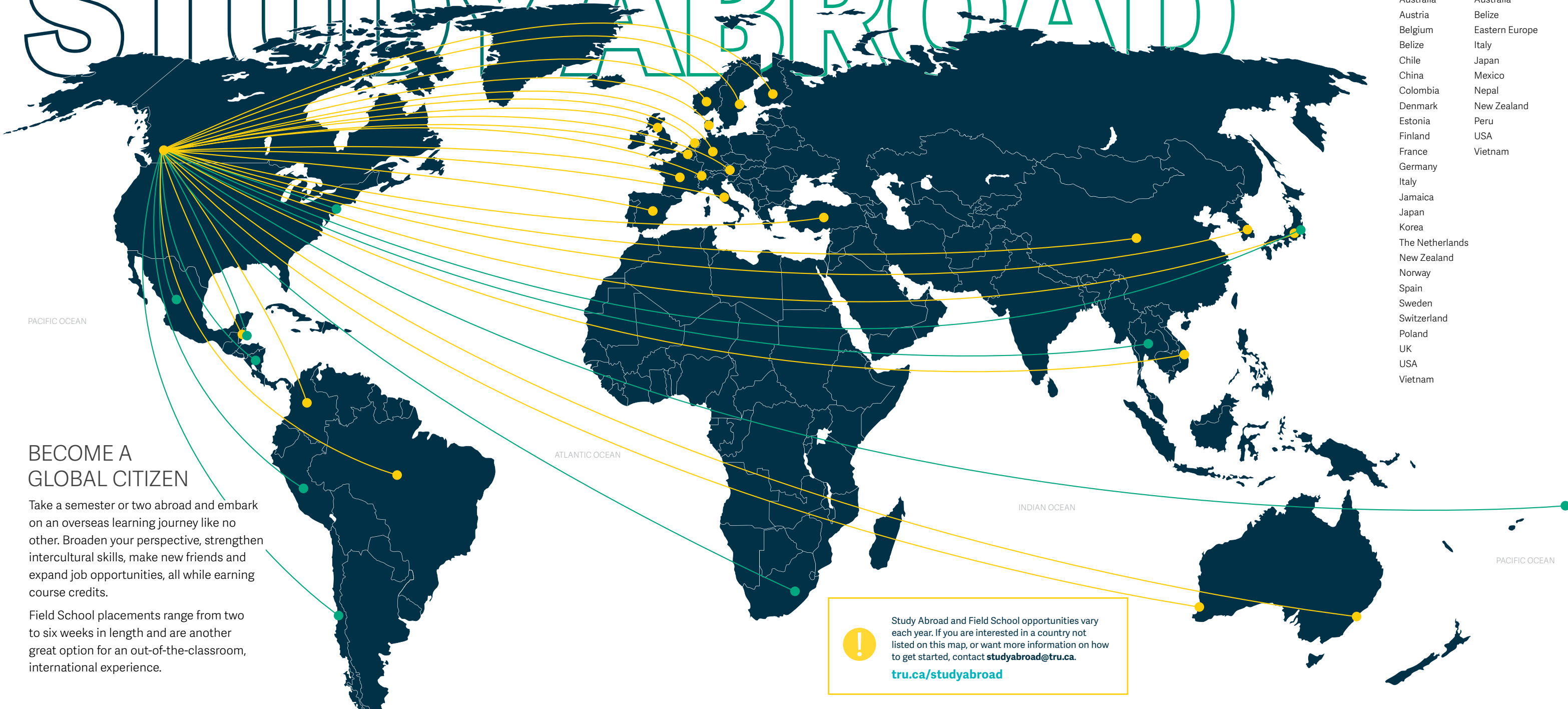
Provides opportunities for Indigenous students to access international Indigenous mentors through online workshops, one-on-one relationships, and speakers at the National Gathering. Ombaashi is the national coordinating centre for the Indigenous Network Mentoring Program and provides access and funding for Indigenous Healing Summer Schools at TRU or in students' own territories.

KNOWLEDGE MAKERS

Indigenous students learn how to research and publish as Indigenous researchers. Up to 15 Indigenous undergraduate students each year form a research network and learn how to "make knowledge" from diverse and unexpected places. Knowledge Makers receive a \$1,000 award and may participate in the Indigenous Cultural Education Exchange program.



STUDY ABROAD



Study Abroad	Field Schools
Australia	Australia
Austria	Belize
Belgium	Eastern Europe
Belize	Italy
Chile	Japan
China	Mexico
Colombia	Nepal
Denmark	New Zealand
Estonia	Peru
Finland	USA
France	Vietnam
Germany	
Italy	
Jamaica	
Japan	
Korea	
The Netherlands	
New Zealand	
Norway	
Spain	
Sweden	
Switzerland	
Poland	
UK	
USA	
Vietnam	

BECOME A GLOBAL CITIZEN

Take a semester or two abroad and embark on an overseas learning journey like no other. Broaden your perspective, strengthen intercultural skills, make new friends and expand job opportunities, all while earning course credits.

Field School placements range from two to six weeks in length and are another great option for an out-of-the-classroom, international experience.

! Study Abroad and Field School opportunities vary each year. If you are interested in a country not listed on this map, or want more information on how to get started, contact studyabroad@tru.ca.
tru.ca/studyabroad



HOME AWAY FROM HOME

The space where you recharge is important. Why not choose campus housing? It's the closest and most convenient option!

CAMPUS HOUSING

Live walking distance from class and join a vibrant, active community of students from all over the world.

All first-year students have a guaranteed space if they apply **before** the **April 1, 2023** deadline.

After that date, applications will be accepted on a first-come, first-served basis.

Apply to only the residence of your choice (one application).

tru.ca/housing

Eat On Campus

TRU Housing does not include a meal plan. Each suite has a kitchenette or access to common kitchens, and supermarkets are located a short walk from campus. And right on campus, you'll find:

- **The Den:** a casual, all-ages restaurant with pub-style fare and daily specials
- **Common Grounds:** a student-run café with coffee, light meals and snacks
- **U & M Deli / Bento Sushi:** coffee, plus samosa, butter chicken wraps, poke bowls and more
- **ESTR's Market:** meals prepared by students in the ESTR program, as well as locally-sourced artisan crafts and foodstuffs
- And more, including Tim Hortons, Starbucks, The Workbench, Urban Market and Subway.

Find out more about food available on campus:

tru.ca/food



North Tower

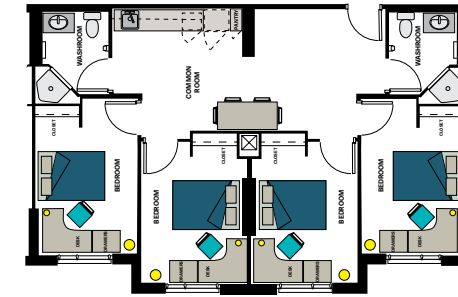


North Tower

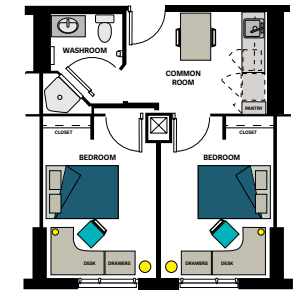
Enjoy one of the best views in the city at the 11-storey North Tower. Access premium amenities such as a cardio room, dance studio, patio with large BBQ, games room and regular social activities.

NORTH TOWER SEPTEMBER – APRIL
 Application fee 2 or 4 bedroom suite
 \$100 \$8,110*

North Tower 4 Bedroom Plan



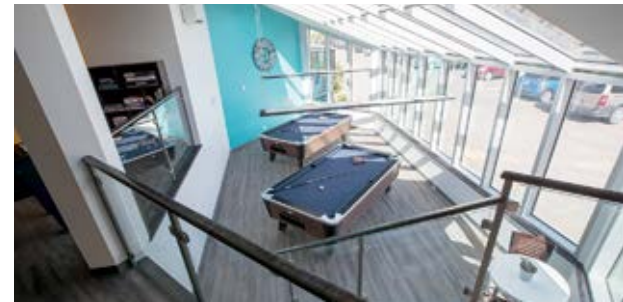
North Tower 2 Bedroom Plan



*Rates are for the 2022-23 year and are subject to change without notice. Floor plans may slightly differ from room to room.



McGill Residence

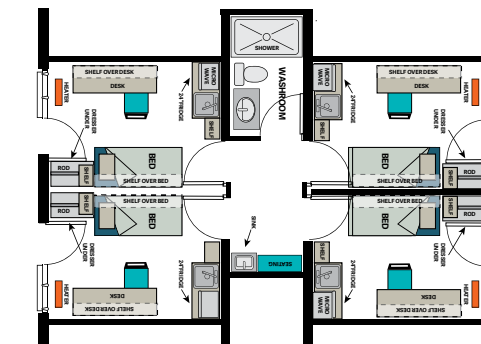


McGill Residence

This community is ideal for students looking for an active, close-knit, communal experience. The newly renovated McGill Residence has amenities that include laundry, games room, kitchen and study room.

MCGILL RESIDENCE SEPTEMBER – APRIL
 Application fee Room
 \$100 \$5,416*

McGill Residence 4 Bedroom Plan



*Rates are for the 2022-23 year and are subject to change without notice. Floor plans may slightly differ from room to room.



East Village

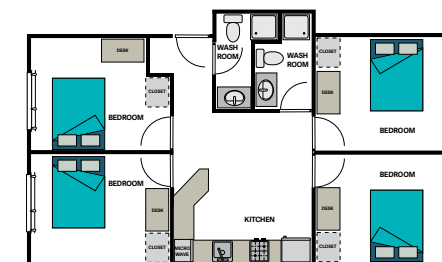


East Village

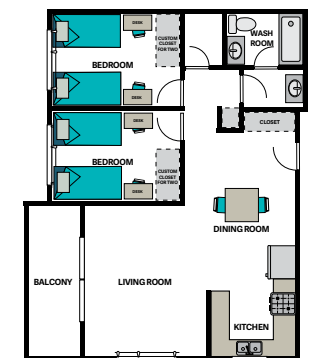
Have the independence of off-campus living with the convenience of on-campus life at East Village. This location is ideal for students looking for a more independent, mature community with student-friendly amenities.

EAST VILLAGE SEPTEMBER – APRIL
 Application fee 4 bedroom suite 4 bed, 2 bedroom suite (shared)
 \$100 \$5,763* \$3,909*

East Village 4 Bedroom Plan



East Village 4 Bed, 2 Bedroom (shared) Plan



*Rates are for the 2022-23 year and are subject to change without notice. Floor plans may slightly differ from room to room.

YOUR CHOICE

ON CAMPUS

- Come and join us
- Live in Kamloops or Williams Lake
- Take classes in person
- Explore campus green space
- Choose from 140+ programs
- Be part of the campus community
- Meet professors face to face
- Join clubs and activities
- Live on campus

OPEN LEARNING (DISTANCE)

We'll meet you where you're at

Live anywhere

Choose from 60+ programs or 600+ courses
Get academic credit for life or career experiences

Self paced courses

Longer timelines for completion (30 weeks)

Partnership agreements with Canadian
Colleges/Universities

Programs unique to Open Learning: Bachelor
of Health Science, Medical Lab Assistant,
Polysomnography, General Studies,
Bachelor of Technology

COMBINE OL & CAMPUS

Your educational path
should be flexible!

You can enrol in on-campus programs and take
additional Open Learning courses. You can also
learn by distance through Open Learning,
and take a few courses on campus.

What works best for you?

Contact us to learn more.



JOIN US ON CAMPUS and take advantage of quiet zones for solo study as well as rooms designed for collaboration. Some even come with a view!

CHOOSE YOUR PATH

Start at TRU, go anywhere. This is just a snapshot of some of the subjects you can study here. Dive deeper into your interests with program majors and minors.

Visit tru.ca/programs for more information.



Craving adventure?

ADVENTURE & TOURISM

Adventure Studies
Tourism, Sport, Resort and Event Management



Intrigued by the world around you?

Inspired to make the world a better place?



LAW

Juris Doctor
Police & Justice Studies

HEALTHCARE

Nursing
Health Care Assistant & Practical Nursing (WL)
Respiratory Therapy



Passionate about care?

Looking to build creative thinking and communication skills, or create art?

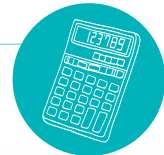


ARTS

Literatures	Communication
Languages	Visual Arts
Performing Arts	Philosophy
Environment	History
Culture	Politics
Society	Psychology

BUSINESS & ECONOMICS

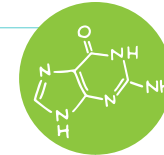
Accounting & Finance
Economics
Human Enterprise & Innovation
Management, International Business
Information & Supply Chain
Marketing



Have big entrepreneurial dreams?

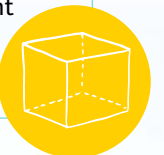
SCIENCE

Applied Sustainable Ranching (Williams Lake)
Architectural & Engineering Technology
Biological Sciences
Chemistry
Computing Science
Engineering & Applied Science
Mathematics & Statistics
Natural Resource Sciences
Physics & Geology
Veterinary Technology



TRADES & TECHNOLOGY

Automotive	Heavy Mechanical
Carpentry	Millwright
Culinary Arts	Plumbing
Electrical	Power Engineering
Electrical Instrumentation	Refrigeration & Air Conditioning
Horticulture	Retail Meat Processing
Heavy Duty & Commercial Transport	Water Treatment
	Welding



Curious about how things work, or enjoy working with your hands?

EDUCATION & SOCIAL WORK

English Language Learning and Teaching
Education
Social Work & Human Service
University and Employment Preparation



Interested in teaching or helping others?

Prefer studying online?

OPEN LEARNING tru.ca/distance

Adult Basic Education
Arts
Business and Management Studies
Education & Social Work
General Studies
Health Sciences
Science
Technology
Tourism



HOW DO I GET IN?

AT TRU EVERYONE HAS THE RIGHT TO SEEK THEIR POTENTIAL.

Program admissions are based on three processes:

Non-competitive Admission

The number of students admitted into these programs is **not limited**. Programs have minimum admission requirements, but if you are missing a requirement, upgrading is possible.



Limited Admission

Only a **limited number** of students will be accepted into these programs each year. Admission decisions are made on a first-qualified basis.



Competitive Admission

A **select number** of students are accepted into these programs each year. Your grades will be considered and you may be asked to submit letters of reference, attend an interview, and/or fill out a questionnaire. These programs have a set application deadline.



OPEN ACCESS UNIVERSITY

If you don't meet your program requirements, you can upgrade.

In some programs, you may take an upgrading course alongside other first-year courses, so you don't have to wait to begin your studies. If you aren't sure where to start, let us know. We are here for you.

What do I need to get in?

GENERAL ADMISSION REQUIREMENTS

TRU programs generally require BC high school graduation or equivalent. Exceptions to this requirement are shown in the program admission requirements listed on pages **28-39**.

You may have the equivalent of BC high school graduation if you have completed:

- the BC Adult Graduation (Adult Dogwood) diploma, or previously the ABE Provincial diploma
- the General Education Diploma (GED)

In some circumstances, certain programs may accept students without high school graduation under mature student status.

PROGRAM SPECIFIC ADMISSION REQUIREMENTS

In addition to meeting the general admission requirements you will need to meet your program's specific admission requirements listed on pages **28-39** or see tru.ca/programs.

SECONDARY SCHOOL COURSE EQUIVALENTS

Don't see your completed course listed in the program requirements chart? High schools across Canada have different courses that are equal in value (equivalent) that meet our program requirements.

Be sure to check your courses at tru.ca/equivalents

TRU START

BC high school students can take selected TRU programs, or one or two courses, tuition free* during grade 12.

tru.ca/trustart

*Students are encouraged to apply for a Part Time Studies Grant through StudentAidBC.

ADVANCED STANDING & ENRICHED PROGRAMS

Students who complete enriched secondary school programs can earn transfer credits.

International Baccalaureate: for higher-level courses passed with a grade of 5 or higher

Advanced Placement: for approved subjects passed with a grade of 4 or higher tru.ca/asep

UNIVERSITY & EMPLOYMENT PREPARATION

University Preparation

Upgrade your skills. Complete the courses you need to enter career, vocational and academic programs, or choose from adult basic education diplomas including the BC Adult Graduation Diploma (the equivalent to high school completion).

tru.ca/uprep

Education and Skills Training

Gain workplace skills and independence with the ESTR program for students with cognitive disabilities.

tru.ca/estr

English for Academic Purposes Academic Preparation Program

Develop your ability to understand, speak, read and write English and prepare for academic study in this nationally recognized five-level program.

tru.ca/esl



Why self identify as Indigenous on your application?

On your application form, you will find an optional section on Indigenous self-identification. Checking "yes" helps advise you about services and events that might be of interest. Some TRU programs also allocate seats to students who identify as Indigenous. Your information is kept confidential.

Application Deadlines

TRU begins accepting applications for most programs on **October 1**.

Unless noted below as a program-specific deadline, deadlines to apply for admission are as follows. Not all programs have winter and summer intakes. Applicants who apply by these deadlines, and submit all required documentation, will receive an admission decision prior to the start of registration. Some programs will continue to accept applications beyond these deadlines where space is available.

INTAKE	APPLICATION DEADLINE
Fall (September)	May 1
Winter (January)	September 1
Summer (May)	January 1

Program-specific application deadlines

PROGRAM	APPLICATION DEADLINE
Education (Elementary)	January 15
Nursing	January 31
Respiratory Therapy	February 1
Veterinary Technology	February 1
Law	February 10
Education (Secondary STEM)	February 15
Social Work	February 28
Trades Foundation and Apprenticeship Programs	Applications are accepted year-round. Intake dates vary.
Graduate programs	Intake dates and application deadlines vary. Visit tru.ca/programs/graduate for details.

Fall (September) intake only

Kamloops Seasonal Weather Range

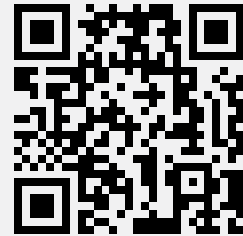
Experience all four seasons with more than 2,000 hours of sunshine annually in Kamloops! These are approximate seasonal highs and lows, not average temperatures. We might hit the peaks or dips only briefly each season.

 AUTUMN 5° to 18° C	 WINTER -22° to 5° C	 SPRING 0° to 16° C	 SUMMER 10° to 38° C
--	---	--	---

QUESTIONS?

Contact the
Future Students Team

Toll Free: 1-888-663-1653
futurestudents@tru.ca



<https://www.tru.ca/forms/info-request/>

START WHERE YOUR INTERESTS ARE

PROGRAMS & ADMISSION REQUIREMENTS

Laddering options Students can apply credit earned in this credential towards a higher-level program.	Co-op	Indigenous Admissions Reserved seats for students who self-identify as Indigenous and meet admission requirements.	Study Abroad
L	C	IA	✈️

Adventure & Tourism

ADVENTURE GUIDE CERTIFICATE	ENGLISH	73% in English Studies 12 or English First Peoples 12	
	MATH	Any Math 11	
	ADDITIONAL REQUIREMENTS	Completion of the Adventure Studies Student Information Form; Supplemental documents and attendance of information sessions; 19 years of age by start of program	
	ADMISSION TYPE	Competitive	
[L]			
ADVENTURE GUIDE DIPLOMA	ENGLISH	73% in English Studies 12 or English First Peoples 12	
	MATH	Any Math 11	
	ADDITIONAL REQUIREMENTS	Completion of the Adventure Guide Certificate; Adventure Studies Student Information Form Experience Log; Attendance of information session; 19 years of age by start of program	
	ADMISSION TYPE	Competitive	
[L]			
BACHELOR OF TOURISM MANAGEMENT	ENGLISH	73% in English Studies 12 or English First Peoples 12	Streams: Adventure Studies, Tourism Management
	MATH	60% in Foundations of Math 11 or Pre-Calculus 11 or Foundations of Math 12	Concentrations: Adventure Studies, Entrepreneurship, Tourism Studies
	ADDITIONAL REQUIREMENTS	Students with 67% in Pre-Calculus 12 or Foundations of Math 12 will be exempt from MATH 1100	Major: Adventure Studies, Entrepreneurship, Tourism Studies
	ADMISSION TYPE	Limited	Exit credential after two years: Tourism Management Diploma
[✈️ C]			
EVENTS & CONVENTIONS MANAGEMENT DIPLOMA	ENGLISH	73% in English Studies 12 or English First Peoples 12	
	MATH	60% in Foundations of Math 11, Pre-Calculus 11 or Foundations of Math 12	
	ADDITIONAL REQUIREMENTS	Students with 67% in Pre-Calculus 12 or Foundations of Math 12 will be exempt from MATH 1100	
	ADMISSION TYPE	Limited	
[L]			

Adventure & Tourism, continued

RESORT & HOTEL MANAGEMENT DIPLOMA	ENGLISH	73% in English Studies 12 or English First Peoples 12
	MATH	60% in Foundations of Math 11, Pre-Calculus 11 or Foundations of Math 12
	ADDITIONAL REQUIREMENTS	Students with 67% in Pre-Calculus 12 or Foundations of Math 12 will be exempt from MATH 1100
	ADMISSION TYPE	Limited
[L]		
SPORT EVENT MANAGEMENT DIPLOMA	ENGLISH	73% in English Studies 12 or English First Peoples 12
	MATH	60% in Foundations of Math 11, Pre-Calculus 11 or Foundations of Math 12
	ADDITIONAL REQUIREMENTS	Students with 67% in Pre-Calculus 12 or Foundations of Math 12 will be exempt from MATH 1100
	ADMISSION TYPE	Limited
[L]		
TOURISM MANAGEMENT DIPLOMA	ENGLISH	73% in English Studies 12 or English First Peoples 12
	MATH	60% in Foundations of Math 11, Pre-Calculus 11 or Foundations of Math 12
	ADDITIONAL REQUIREMENTS	Students with 67% in Pre-Calculus 12 or Foundations of Math 12 will be exempt from MATH 1100
	ADMISSION TYPE	Limited
[L]		

Arts, Humanities & Social Sciences

INDIGENOUS STUDIES CERTIFICATE	ENGLISH	73% in English Studies 12 or English First Peoples 12	
	ADMISSION TYPE	Non-competitive; Upgrading available in program	
BACHELOR OF ARTS	ENGLISH	73% in English Studies 12 or English First Peoples 12	<i>Majors:</i> Communication, Economics, Economic & Political Studies, English, Geography & Environmental Studies, History, Mathematics, Mathematics and Economics, Philosophy, Psychology, Sociology, Theatre Arts <i>Concentrations:</i> Creative and Performing Arts, Social Sciences, Humanities, Humanities and Social Sciences <i>Minors:</i> Archaeology and Geology, Creative Writing, Digital Media Studies, Environmental Economics & Sustainable Development, Geography, Language & Global Studies, Political Studies, Public Relations, Visual Arts <i>Exit credential after two years:</i> Associate of Arts or Associate of Arts Modern Language Degree
	ADDITIONAL REQUIREMENTS	Math 11 or higher strongly recommended for students pursuing Education or a major in Geography & Environmental Studies, Sociology or Psychology; Recommended to take any second languages to grade 12	
	ADMISSION TYPE	Non-competitive; Upgrading available in program	
[X C]			

Arts, Humanities & Social Sciences, continued

BACHELOR OF JOURNALISM	ENGLISH	73% in English Studies 12 or English First Peoples 12	<i>Majors:</i> Public Relations
	ADDITIONAL REQUIREMENTS	Writing sample	
	ADMISSION TYPE	Competitive	
[X C]			
BACHELOR OF FINE ARTS (VISUAL ARTS)	ENGLISH	73% in English Studies 12 or English First Peoples 12	
	ADDITIONAL REQUIREMENTS	Math 11 or higher strongly recommended for students pursuing Education; Recommended to take any second language to grade 12	
	ADMISSION TYPE	Non-competitive; Upgrading available in program	
[X]			
BACHELOR OF INTERDISCIPLINARY STUDIES	ENGLISH	73% in English Studies 12 or English First Peoples 12	
	ADDITIONAL REQUIREMENTS	Completion of 60 credits; Third year entry; See tru.ca/programs for admission requirements	
	ADMISSION TYPE	Competitive	
[X C]			
CULTURAL AND SOCIAL EXPLORATIONS CERTIFICATE	ENGLISH	73% in English Studies 12 or English First Peoples 12	
	ADMISSION TYPE	Non-competitive; Upgrading available in program	
[L]			
DRAWING AND PAINTING CERTIFICATE	ENGLISH	73% in English Studies 12 or English First Peoples 12	
	ADMISSION TYPE	Non-competitive; Upgrading available in program	
[L]			
LITERARY AND ART HISTORY CERTIFICATE	ENGLISH	73% in English Studies 12 or English First Peoples 12	
	ADMISSION TYPE	Non-competitive; Upgrading available in program	
[L]			
VISUAL ARTS STUDIO CERTIFICATE	ENGLISH	73% in English Studies 12 or English First Peoples 12	
	ADMISSION TYPE	Non-competitive; Upgrading available in program	
[L]			
VISUAL ARTS DIPLOMA	ENGLISH	73% in English Studies 12 or English First Peoples 12	
	ADMISSION TYPE	Non-competitive; Upgrading available in program	
[L]			
WORLD LANGUAGES AND CULTURES CERTIFICATE	ENGLISH	73% in English Studies 12 or English First Peoples 12	
	ADMISSION TYPE	Non-competitive; Upgrading available in program	

Business, Economics & Management

[X C]	BACHELOR OF BUSINESS ADMINISTRATION	ENGLISH	73% in English Studies 12 or English First Peoples 12	<p>Majors: Accounting, Economics, Entrepreneurship, Finance, General Business, Human Resource Management, International Business, Marketing, Supply Chain Management</p> <p>Minors: Environmental Economics & Sustainable Development, Financial Markets & Institutions, Leadership, Project Management</p> <p>Exit credential after two years: Associate of Commerce and Business Administration Diploma</p> <p>TRU offers a dual degree with the Bachelor of Business Administration and the Bachelor of Computing Science. Students must meet admission requirements for both programs.</p>
		MATH	67% in Foundations of Math 12 or Pre-Calculus 12	
		ADMISSION TYPE	Non-competitive; Upgrading available in program	

[L]	ACCOUNTING TECHNICIAN DIPLOMA	ENGLISH	73% in English Studies 12 or English First Peoples 12
		MATH	67% in Foundations of Math 12 or Pre-Calculus 12
		ADMISSION TYPE	Non-competitive; Upgrading available in program
Exit credential after first year: Business Foundations Certificate, or equivalent one year certificate program.			

[L]	EXECUTIVE ASSISTANT DIPLOMA	ENGLISH	73% in English Studies 12 or English First Peoples 12
		MATH	67% in Foundations of Math 12 or Pre-Calculus 12
		ADDITIONAL REQUIREMENTS	Completion of the TRU Administrative Assistance Certificate, or equivalent on year certificate program.
		ADMISSION TYPE	Limited

Apply to this program directly through the TULO Center tulo.ca	FIRST NATION APPLIED ECONOMICS CERTIFICATE	ENGLISH	73% in English Studies 12 or English First Peoples 12
		MATH	67% in Foundations of Mathematics 11 or Pre-Calculus 11
		ADDITIONAL REQUIREMENTS	Basic computer literacy and familiarity with word processing and spreadsheet software
		ADMISSION TYPE	Non-competitive; Upgrading available in program

Apply to this program directly through the TULO Center tulo.ca	FIRST NATION TAXATION ADMINISTRATION CERTIFICATE	ENGLISH	73% in English Studies 12 or English First Peoples 12
		MATH	67% in Foundations of Mathematics 11 or Pre-Calculus 11
		ADDITIONAL REQUIREMENTS	Basic computer literacy and familiarity with word processing and spreadsheet software
		ADMISSION TYPE	Non-competitive; Upgrading available in program

[L]	MANAGEMENT DIPLOMA	ENGLISH	73% in English Studies 12 or English First Peoples 12
		MATH	67% in Foundations of Math 12 or Pre-Calculus 12
		ADMISSION TYPE	Non-competitive; Upgrading available in program
Exit credential after first year: Business Foundations Certificate			

Education

[IA]	BACHELOR OF EDUCATION Elementary	ADDITIONAL REQUIREMENTS	Minimum of 90 credits of post-secondary studies acceptable to the School of Education, typically arts, fine arts, math, science, music or physical education; Minimum GPA 2.67; 100 volunteer hours; Letter of Intent; Two confidential statements from referees. See tru.ca/programs for more information
		ADMISSION TYPE	Competitive
		INDIGENOUS COHORT	Available for students who identify as First Nations, Inuit, or Métis.

[IA]	BACHELOR OF EDUCATION Secondary (STEM)	ADDITIONAL REQUIREMENTS	Four-year Bachelor of Science degree (120 credits) or equivalent in mathematics or science discipline; Minimum GPA of 2.33 on the most recent 60 credits; 100 volunteer hours; Letter of Intent; Spontaneous written and personal interview; Two confidential statements from referees. See tru.ca/programs for more information
		ADMISSION TYPE	Competitive

[IA]	BACHELOR OF EDUCATION IN TRADES & TECHNOLOGY	ADDITIONAL REQUIREMENTS	See tru.ca/programs for more information
		ADMISSION TYPE	Competitive

[L]	EARLY CHILDHOOD EDUCATION DIPLOMA	ENGLISH	73% in English Studies 12 or English First Peoples 12
		ADDITIONAL REQUIREMENTS	25 hours of volunteer and/or work experience in a licensed childcare facility; Attend an applicant readiness interview
		ADMISSION TYPE	Limited

Health Sciences

[IA X]	BACHELOR OF SCIENCE IN NURSING	HIGH SCHOOL APPLICANTS	Students who have graduated high school or have completed university preparatory (UPrep) or adult basic education (ABE) coursework. A blend of UPrep/ABE and high school courses may be considered.
			OR
			Students with up to 9 credits of post-secondary coursework. GPA from these courses will not apply.
		ENGLISH	73% in English Studies 12 or English First Peoples 12
		MATH	73% in any Math 12 course
		SCIENCE	73% in Anatomy & Physiology 12; 73% in Chemistry 11; 7 3% in one other science 11 or 12
		ADDITIONAL REQUIREMENTS	CASPer Situational Judgement Test; A GPA will be generated using the 5 courses above for admission consideration and ranking
		ADMISSION TYPE	Competitive

POST-SECONDARY APPLICANTS

Students with 12 credits or more of post-secondary coursework (by the application deadline)

ADMISSION REQUIREMENTS	Grade 12 (or equivalent) or Mature Student status Overall GPA of 3.0 or higher in the last 30 credits Completion of the following 12 credits: English 1000 level or higher with a C+ minimum Biology 1000 level or higher with a C+ minimum Social Science 1000 or higher with C+ minimum Math/Science 1000 or higher with a C+ minimum Applicants in this category must have the 4 post-secondary courses noted above. A GPA will be generated for post-secondary coursework. If an applicant has more than 30 credits, the most recent 30 credits will be used for GPA consideration and ranking.
ADDITIONAL REQUIREMENTS	CASPer Situational Judgement Test
ADMISSION TYPE	Competitive

BACHELOR OF HEALTH SCIENCE

ADMISSION REQUIREMENTS	Same requirements as Respiratory Therapy Diploma
ADMISSION TYPE	Competitive
<i>(Respiratory Therapy Dual Credential)</i>	

HEALTH CARE ASSISTANT CERTIFICATE

ENGLISH	73% in English Studies 12 or English First Peoples 12
ADDITIONAL REQUIREMENTS	Completion of grade 11 minimum; Standard First Aid with CPR Level C; Food Safe Level 1
ADMISSION TYPE	Limited

PRACTICAL NURSING DIPLOMA

ENGLISH	65% in English Studies 12 or English First Peoples 12
MATH	60% in Foundations of Math 11 or equivalent
SCIENCE	60% in Anatomy and Physiology 12; Human Anatomy and Physiology for Practical Nurses (PNUR 1300 or HLTH 1121 at TRU with 65%). See tru.ca/programs for additional details
ADMISSION TYPE	Competitive

(Williams Lake Campus, next intake September 2024)

RESPIRATORY THERAPY DIPLOMA

[L]

ENGLISH	73% in English Studies 12 or English First Peoples 12
MATH	67% in Foundations of Math 12 or Pre-Calculus 12
SCIENCE	67% in Anatomy & Physiology 12; 67% in Physics 11; 67% in Chemistry 12
ADDITIONAL REQUIREMENTS	CPR Level C with AED; Program Information Session and/or Hospital RT Department Tour; Canadian citizenship or permanent resident status Fast track stream available see www.tru.ca/rt for more information.
ADMISSION TYPE	Competitive

Law & Justice

LAW—JURIS DOCTOR

[IA ✕]

ADDITIONAL REQUIREMENTS	Obtained an undergraduate degree or successfully completed the first three years (min. 90 credits) or more of an undergraduate degree; Completed application (including CV or resumé and any other requested information) Official transcripts; LSAT score; Personal Statement; Letters of reference; Any other supplemental documents required by your selected category of admissions. See tru.ca/programs for admission requirements
ADMISSION TYPE	Competitive

POLICE & JUSTICE STUDIES DIPLOMA

[L IA ✕]

ENGLISH	73% in English Studies 12 or English First Peoples 12
ADDITIONAL REQUIREMENTS	Statement of Career Objectives; Resumé Note: some required courses require physical fitness standards and may require a criminal record check
ADMISSION TYPE	Limited

Science & Technology

BACHELOR OF COMPUTING SCIENCE

[✕ C]

ENGLISH	73% in English Studies 12 or English First Peoples 12
MATH	67% in Pre-Calculus 12 or Foundations of Math 12 (completed within the last two years)
ADMISSION TYPE	Non-competitive; Upgrading available in program
<i>TRU offers a dual degree with Bachelor of Computing Science and the Bachelor of Business Administration. Students must meet admission requirements for both programs.</i>	

COMPUTING SCIENCE DIPLOMA

[LC]

ENGLISH	73% in English Studies 12 or English First Peoples 12
MATH	67% in Pre-Calculus 12 or Foundations of Math 12 (completed within the last two years)
ADMISSION TYPE	Non-competitive; Upgrading available in program

BACHELOR OF ENGINEERING IN SOFTWARE ENGINEERING

[C]

ENGLISH	73% in English Studies 12 or English First Peoples 12
MATH	67% in Pre-Calculus 12
SCIENCE	67% in Chemistry 11; 67% in Physics 11
ADDITIONAL REQUIREMENTS	Physics 12 with 67% preferred. Recommended courses: Calculus 12, Drafting 12, a computing or information technology course involving computer programming and problem solving using high-level languages such as C/C++, Visual Basic, or Java
ADMISSION TYPE	Competitive

ARCHITECTURAL & ENGINEERING TECHNOLOGY DIPLOMA

ENGLISH	73% in English Studies 12 or English First Peoples 12
MATH	67% in Foundations of Math 12 or Pre-Calculus 11
SCIENCE	Physics 11
ADMISSION TYPE	Limited

Science & Technology, continued

ENGINEERING TRANSFER -YEAR 1 [X]	ENGLISH	73% in English Studies 12 or English First Peoples 12
	MATH	73% in Pre-Calculus 12
	SCIENCE	73% in Chemistry 11 (Chemistry 12 is highly recommend); 73% in Physics 12
	ADDITIONAL REQUIREMENTS	Students lacking Chemistry 12 may still be admitted, but will be unable to complete the first-year courses in two semesters
	ADMISSION TYPE	Competitive
BACHELOR OF NATURAL RESOURCE SCIENCE [X C]	ENGLISH	73% in English Studies 12 or English First Peoples 12
	MATH	67% in Pre-Calculus 12
	SCIENCE	67% in Life Sciences 11; 67% in Chemistry 11
	ADDITIONAL REQUIREMENTS	Note: students with Anatomy & Physiology 12, and Chemistry 12 will be given preference.
	ADMISSION TYPE	Limited Note: if you do not meet all requirements, you may still be considered for admission.
APPLIED SUSTAINABLE RANCHING DIPLOMA (Williams Lake Campus)	ENGLISH	English Studies 12 or English First Peoples 12
	MATH	60% in Foundations of Math 11
	ADDITIONAL REQUIREMENTS	Work placement on a working farm or ranch (Program Coordinator can assist you in finding a suitable placement)
	ADMISSION TYPE	Limited
VETERINARY TECHNOLOGY DIPLOMA Available on Campus or through TRU Open Learning	ENGLISH	67% in English Studies 12 or English First Peoples 12
	MATH	67% in Foundations of Math 11
	SCIENCE	67% in Life Sciences 11
	ADDITIONAL REQUIREMENTS	Anatomy & Physiology 12 is recommended; Canadian citizenship or permanent resident status; Know/Wonder/Learn document; Interview with a RVT; Intro/Q&A video; Two reference letters (one general, one work-related)
	ADMISSION TYPE	Competitive
ANIMAL WELFARE CERTIFICATE Available by Distance Education	ADDITIONAL REQUIREMENTS	Completion of grade 12 or Mature Student Status recommended
	ADMISSION TYPE	Limited
FORESTRY TRANSFER	ENGLISH	73% in English Studies 12 or English First Peoples 12
	MATH	67% in Pre-Calculus 12
	SCIENCE	Two of Life Sciences 11, Chemistry 11 or Physics 11 - All three strongly recommended (note: Life Sciences 11 is minimum requirement for entry into BIOL 1110 at TRU); One of Anatomy & Physiology 12, Chemistry 12 or Physics 12
	ADMISSION TYPE	Competitive

Science & Technology, continued

FIRST NATIONS APPLIED LAND MANAGEMENT CERTIFICATE Apply to this program directly through the TULO Center tulo.ca	ENGLISH	73% in English Studies 12 or English First Peoples 12	
	MATH	67% in Foundations of Mathematics 11 or Pre-Calculus 11	
	ADDITIONAL REQUIREMENTS	Basic computer literacy and familiarity with word processing and spreadsheet software	
	ADMISSION TYPE	Non-competitive; Upgrading available in program	
BACHELOR OF SCIENCE [X C]	ENGLISH	73% in English Studies 12 or English First Peoples 12	Majors: Animal Biology, Biology, Cellular, Molecular & Microbial Biology, Chemistry, Chemical Biology, Ecology & Environmental Biology, Environmental Chemistry, General Science
	MATH	67% in Pre-Calculus 12	
	SCIENCE	Life Sciences 11 or Anatomy & Physiology 12 with C+; Chemistry 11; Physics 11	
	ADMISSION TYPE	Non-competitive; Upgrading available in program	
	ENGLISH	73% in English Studies 12 or English First Peoples 12	Majors: Computing Science, Computing Science & Mathematics, Mathematics, Mathematics & Economics, Mathematical Sciences, Physics Minors: Environmental Economics & Sustainable Development, Management, Archaeology and Geology Exit credential after two years: Associate of Science
	MATH	67% in Pre-Calculus 12	
	SCIENCE	Chemistry 11; Physics 11	
	ADMISSION TYPE	Non-competitive; Upgrading available in program	
BACHELOR OF SOCIAL WORK [IA X]	ADDITIONAL REQUIREMENTS	Year 3 entry; A minimum of 54 credits (60 credits recommended); The credit requirement can be met by general university studies, or a combination of human service certificate/diploma or equivalent with a minimum GPA of 2.67 and general university course work; General university course work must include 3 credits of academic English composition (ENGL 1100 at TRU) or 6 credits of English literature, and SOCW 2060 and SOCW 2120 or equivalent; A minimum GPA of 2.33 on general university coursework is required	
	ADMISSION TYPE	Competitive	
EDUCATION ASSISTANT AND COMMUNITY SUPPORT CERTIFICATE [L]	ENGLISH	73% in English Studies 12 or English First Peoples 12	
	ADDITIONAL REQUIREMENTS	Two reference letters; criminal record check, immunization record, Canadian citizenship or permanent resident status	
	ADMISSION TYPE	Limited	
HUMAN SERVICE DIPLOMA [L]	ENGLISH	73% in English Studies 12 or English First Peoples 12	
	ADDITIONAL REQUIREMENTS	Two references; Canadian citizenship or permanent resident status	
	ADMISSION TYPE	Limited	

University & Employment Preparation

EDUCATION AND SKILLS TRAINING CERTIFICATE PROGRAM (ESTR)	ADDITIONAL REQUIREMENTS	High school transcripts, reference letter, work or volunteer experience.
	ADMISSION TYPE	Limited
ENGLISH FOR ACADEMIC PURPOSES	ADDITIONAL REQUIREMENTS	See tru.ca/programs for admission requirements
	ADMISSION TYPE	Non-competitive
UNIVERSITY PREPARATION (UPGRADING)	ADDITIONAL REQUIREMENTS	At least 17 years of age or one year out of school; Canadian citizen; permanent resident
	ADMISSION TYPE	Non-competitive

Trades & Industrial Technology

ACCUPLACER is a computer-adaptive test designed to evaluate skills in reading, writing and mathematics. It is the entry assessment for trades certificate and diploma applicants.

To schedule a test session, contact assess@tru.ca

tru.ca/trades

APPRENTICESHIPS IN CONSTRUCTION, MECHANICAL & WELDING TRADES	MINIMUM ADMISSION REQUIREMENTS	Valid Industry Training Authority (ITA) number (indentured/sponsored by an employer); Working in your trade	Automotive Service Technician, Carpenter, Circular Saw Filer, Diesel Engine Mechanic, Electrician – Construction, Electrician – Industrial, Gasfitter A (Level 3), Gasfitter B (Level 1 & 2), Heavy Duty Equipment Technician, Industrial Mechanic (Millwright), Instrumentation and Control Technician, Meatcutter, Plumber, Refrigeration and Air Conditioning Mechanic, Steamfitter/Pipefitter, Truck and Transport Mechanic, Transport Trailer Technician, Welder
	ADMISSION TYPE	Limited	
	ADMISSION TYPE	Limited	
FOUNDATION CERTIFICATES IN CONSTRUCTION, MECHANICAL & WELDING TRADES	MINIMUM ADMISSION REQUIREMENTS	Successful Entry Assessment	Automotive Service Technician, Electrician, Heavy Mechanical (Diesel Engine, Heavy Duty Equipment, Transport Trailer Technician, Truck and Transport Mechanic), Industrial Mechanic (Millwright/Machinist), Instrumentation and Control Technician, Refrigeration and Air Conditioning, Piping (Plumber, Steamfitter/Pipefitter, Pipefitter), Residential Construction (Carpenter Level 1 & 2), Welder
	ADMISSION TYPE	Limited	
	ADMISSION TYPE	Limited	
HORTICULTURE CERTIFICATE [L]	MINIMUM ADMISSION REQUIREMENTS	BC grade 12 or equivalent, or Mature Student Status. Attend a program orientation session; Recommended: be in good physical condition and have a strong interest in plants and hands-on work	
	ADMISSION TYPE	Limited	
	ADMISSION TYPE	Limited	

Trades & Technology, continued

HORTICULTURE MANAGEMENT DIPLOMA	MINIMUM ADMISSION REQUIREMENTS	Completion of a recognized one-year horticulture certificate which includes six credits of approved post-secondary English courses; Some diploma courses may require specific pre-requisites
	ADMISSION TYPE	Limited
	ADMISSION TYPE	Limited
POWER ENGINEERING 4TH CLASS CERTIFICATE	MINIMUM ADMISSION REQUIREMENTS	BC grade 12 or equivalent, Math 11 or Pre-Calculus 12, successful entry assessment
	ADMISSION TYPE	Limited
	ADMISSION TYPE	Limited
PROFESSIONAL COOK LEVEL 1 & 2 CULINARY ARTS CERTIFICATE	MINIMUM ADMISSION REQUIREMENTS	Grade 10 (grade 12 preferred) or Mature Student Status; Entry assessment for Math and English may be required; Interview with program coordinator, Food Safe Level 1 required by first week of classes.
	ADMISSION TYPE	Limited
	ADMISSION TYPE	Limited
RETAIL MEAT PROCESSING FOUNDATION CERTIFICATE	ADDITIONAL REQUIREMENTS	Grade 10 (grade 12 preferred); Food Safe Level 1; Successful Entry Assessment; Canadian citizenship or permanent resident status; Interview and Orientation with program coordinator
	ADMISSION TYPE	Limited
	ADMISSION TYPE	Limited
WATER & WASTEWATER TECHNOLOGY DIPLOMA	MINIMUM ADMISSION REQUIREMENTS	BC grade 12 or equivalent
	ADMISSION TYPE	Limited
	ADMISSION TYPE	Limited
WATER & WASTEWATER UTILITIES CERTIFICATE	MINIMUM ADMISSION REQUIREMENTS	BC grade 12 or equivalent
	ADMISSION TYPE	Limited
	ADMISSION TYPE	Limited



Graduate and Post-graduate Programs

Take your education to the next level. Our collaborative research culture and integrated approach to graduate studies, innovation and knowledge translation provide the dynamic learning environment necessary for inquiry, discovery and leadership in your field.

tru.ca/gradstudies

[Master of Arts in Human Rights and Social Justice](#)

[Master of Business Administration](#)

[Master of Education](#)

[Master in Environmental Economics & Management](#)

[Master of Nursing](#)

[Master of Science in Data Science](#)

[Master of Science in Environmental Economics & Management](#)

[Master of Science in Environmental Science](#)

ADMISSION REQUIREMENTS

See tru.ca/programs for admission requirements for master's degrees

ADMISSION TYPE Competitive

\$180,000
in scholarships available exclusively
to graduate students

Post-Baccalaureate Programs

ADMISSION TYPE Varies by program

Visit tru.ca/programs for more information.

Post-Baccalaureate Diplomas: Accounting, Adventure Studies, Business Administration, Economics, Economics & Political Studies, Entrepreneurship, Finance, Managing Festivals & Events, Human Resource Management, Innovation and Entrepreneurship in Tourism, International Business, Managing Festivals & Events, Marketing, Math & Economics, Resort Experience Management, Supply Chain Management, Tourism Destination Development, Tourism Experience Management

Post-Baccalaureate Certificates: Teaching English to Speakers of Other Languages (TESL), Tourism

Post-Diploma Certificates: Infant and Toddler Educator, Special Needs Educator

"Here, I'm able to access resources and equipment essential to my research. Graduate studies at TRU are the perfect balance of learning, teaching, engaging with communities and networking with professionals."

Kyle Gillich

Master of Science in Environmental Science
Penticton, BC

Know Your Costs

University is an investment into your future. At TRU, you receive an excellent education, and we are proud to offer competitive tuition and student fees.

All programs are different, and tuition fees vary based on the

number of credits you choose to take each semester, and whether you have required labs.

Budget your first year at TRU using our online cost calculator: tru.ca/cost

AVERAGE FIRST YEAR COSTS

DEGREE



TUITION
\$4,576

FEES
\$586.50

*Includes U-Pass and Medical and Dental



BOOKS & SUPPLIES
\$1,000



RESIDENCE
\$3,909 - \$8,110

Estimated expenses are based on two semesters with five courses each in the Bachelor of Arts program

TRADES



TUITION
\$428/mo

FEES
\$132/mo



BOOKS & SUPPLIES
\$100-1,500



RESIDENCE
\$3,909 - \$8,110

Estimated expenses are based on fees for vocational full time programs which range from 6-10 months in length.



HOW MUCH WILL FIRST YEAR COST YOU?

Plan your own budget for a year at TRU | tru.ca/cost



Student Awards & Financial Aid

UNDERGRADUATE ENTRANCE

More than **\$500,000** in annual funding offers

Don't miss out!
Be sure to check opening dates and deadlines and apply ahead of time:

tru.ca/entrance

General Undergraduate Entrance Scholarships

Recognizes academic excellence, leadership, service and accomplishments that foster TRU's values

UP TO \$30,000
PER AWARD

TRU Assurance Bursaries

For new and returning bachelor degree students, with preference to students enrolled in open programs, and/or from the TRU region

UP TO \$20,000
PER BURSARY

TRU Undergraduate Entrance Awards

Recognizes leadership, service and accomplishments that foster TRU's values, with preference to first generation university students

UP TO \$4,000
PER AWARD

TRU Undergraduate Entrance Bursaries

For new, full-time, diploma or baccalaureate degree students facing financial hardship

UP TO \$4,000
PER BURSARY

**For full-time, campus degree or diploma students who are Canadian citizens or permanent residents*

DEADLINES TO APPLY FOR SCHOLARSHIPS, AWARDS AND BURSARIES

Entrance Scholarships	Entrance Awards	Assurance Bursary
March 1, 2023	April 1, 2023	End of May 2023

DEFINITIONS	TYPE	Non-Repayable	Repayable	Application Required	Academic Achievement	Financial Need	Additional Requirements
	AWARD	✓		✓	recognizing academic and/or extracurricular accomplishment 2.00 GPA or equivalent		minimum 60% course load
	BURSARY	✓		✓	2.00 GPA or equivalent	✓	minimum 60% course load (usually) already approved for government student loans (usually)
	SCHOLARSHIP	✓		✓ SOMETIMES	3.50 GPA minimum		minimum 80% course load and it is to be used for further study (usually)
	GRANT	✓		✓ NORMALLY	2.00 GPA or equivalent	✓	
	LOAN		✓	✓		✓	meet criteria such as residence, program of study, course load, adequate performance in studies
	PRIZE	✓					recognizing academic achievement in program of study may be a certificate or plaque, a cash prize, or a combination



IN-COURSE SCHOLARSHIPS, BURSARIES AND AWARDS

OVER \$1,500,000

AVAILABLE TO ALL TRU STUDENTS WHO HAVE COMPLETED AT LEAST ONE FULL-TIME SEMESTER

CO-OPERATIVE EDUCATION (CO-OP)

Co-operative Education blends on-campus learning with practical applied learning. Enhance your education with career-related work experience before graduation.

Students alternate study terms with paid, monitored work-terms in professional industry, non-profit, private business, and public sector organizations.

tru.ca/coop

WORKSTUDY

WorkStudy is a TRU-funded financial assistance program which offers an opportunity for Canadian students to work part-time on campus in positions that accommodate their studies.

tru.ca/awards/work-study

FUNDING OPTIONS FOR INDIGENOUS STUDENTS

There are many avenues for funding your education. Some Indigenous students are eligible to receive support from their band or other organizations to pay for post-secondary education.

SPONSORSHIP

Confirm the process your Nation follows for post-secondary funding, then connect with us. Contact your band, Métis or other organization for information regarding the application process. You will need to submit a *Consent to Release Personal Information Form (Third Party)* so your sponsor has access to your TRU information. Your sponsor will need to submit the *TRU Sponsorship Application* form

before your registration date, otherwise you will have to pay the necessary commitment fee to complete your registration. It will take approximately two weeks for TRU to set up your tuition sponsorship contract. It is your responsibility to ensure your sponsor receives your course registration data form, which is their invoice for your costs.

Possible funding sources for Indigenous students - Undergraduate Degree Programs

	YEAR 1	YEAR 2	YEAR 3	YEAR 4
Band funding	✓	✓	✓	✓
Métis funding	✓	✓	✓	✓
Scholarships and awards	✓ (Entrance)	✓ (Ongoing)	✓ (Ongoing)	✓ (Ongoing)
External sources, e.g., Indspire, Irving K. Barber Award, New Relationship Trust (BC First Nations)	✓	✓	✓	✓
Student aid	✓	✓	✓	✓
Work study	✓	✓	✓	✓
Co-op		✓	✓	✓



Talk to our Qelmúcw (Indigenous) Future Student Advisor for more information, or if you are interested in diploma or certificate programs, because funding schedules may differ.

WANT MORE FUNDING OPTIONS?
tru.ca/awards/external-funding
to find external award resources.

QUESTIONS?

Contact Student Awards & Financial Aid
250-828-5024 | entrance@tru.ca



Fall 2023 | Future Student Timeline

YOUR STEPS TO BECOMING A TRU STUDENT

☐ **Explore your TRU program options**
 Connect with a Future Student Advisor or Qelmu'cw Student Advisor on the Future Students Team



☐ **October 1 – Applications open for Fall 2023**

- tru.ca/apply (program deadlines vary)
- Application Fee \$31.64
- **SUBMIT**
 1. Interim and final high school transcripts
 2. Post-secondary transcripts (if applicable)
 3. Supporting documents (if applicable)

Need help?
 Visit tru.ca/transcript



☐ **Offer of admission**

- Accept your seat offer
- Non-competitive program offers go out February 1
- Limited and competitive admission offer dates vary



☐ **Pay your tuition deposit**

- \$300 for non-competitive programs
- \$500 for limited and competitive admissions programs



☐ **March 1 – Entrance Scholarship applications due**

- Student Awards & Financial Aid is here to help you: awards@tru.ca or call 250-828-5024
- Applications open **December 1**

☐ **April 1 – Deadline for guaranteed first year housing | tru.ca/housing**
(First year students are guaranteed a space in student housing if they apply by the deadline.)

☐ **April 1 – Entrance Awards applications due**

- Student Awards & Financial Aid is here to help you: awards@tru.ca or call 250-828-5024
- Applications open **December 1**



☐ **April – Attend an "I've Applied, What's Next" appointment to make sure you're on track. | tru.ca/infosessions**

☐ **May/June – Timetable your courses**

- Create your conflict-free fall and winter course plan
- Reach out to Academic Advising for selection assistance advising@tru.ca or call 250-828-5075

☐ **May 31 – Assurance Bursary applications due**

- Student Awards & Financial Aid is here to help you: awards@tru.ca or call 250-828-5024
- Applications open **early April**

☐ **Mid-June – Register for your fall and winter semester courses**

- Book a Course Registration Support appointment with a Future Student Advisor if you need help.

☐ **September 1 – Fall semester tuition due**

☐ **September 5 – First day of classes**



Book an appointment



After completing my undergraduate degree at TRU, it was an easy decision to return for a law degree. I got to know members of the community while playing volleyball for the WolfPack, so I knew exactly how welcoming and supportive Kamloops is of its students."

Katie Matthews
 Juris Doctor
 Surrey, BC



Questions? Contact us!



Future Students Office
Thompson Rivers University
850 Sk'lep Trail, Kamloops, BC
V2C 0C8 Canada
Toll Free: 1-888-663-1653
Email: futurestudents@tru.ca
futureindigenous@tru.ca

tru.ca/future

FOLLOW US ON SOCIAL MEDIA:



@ThompsonRiversU

#mytru



This publication was printed in August 2022 before the 2023/2024 academic year. If there are discrepancies between this publication and the Thompson Rivers University calendar, the calendar will take precedence • FUT23001