



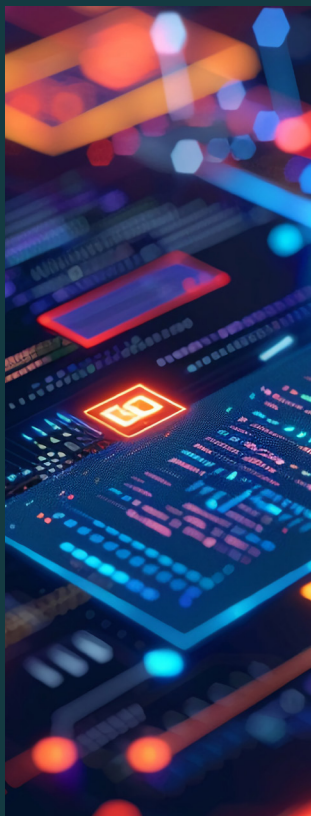
# Host Testing

**Testing is critical. Complexity is inevitable. Our platform simplifies both, so you can move faster.**

Testing in payments is mission-critical. The ecosystem is constantly evolving, interconnected, and driven by innovation, new schemes, regulations, and payment methods. Every update or integration increases operational risk, complexity, and potential delays.

Yet testing often remains manual, fragmented, and reactive, slowing teams down and increasing uncertainty.

Today, organizations juggle multiple host systems, platforms, regions, legacy infrastructure, and overlapping technologies inherited from mergers and acquisitions, all while trying to keep pace with continuous innovation.





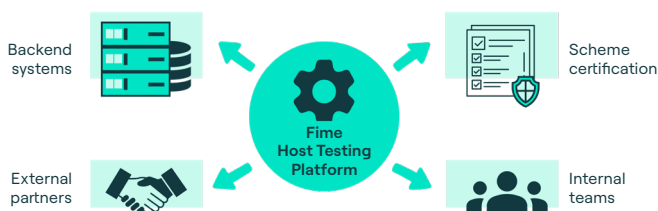
# From fragmented processes to orchestrated validation.

## The challenge.

Payment processors and acquirers operate complex technology environments. Multiple authorization engines, parallel clearing platforms, legacy hosts, modern infrastructure, and expanding payment rails often coexist without unified validation. Testing becomes fragmented, manual, and costly, slowing certification cycles and increasing release risk.

## The solution.

Our platform removes the complexity and acts as a control layer across your ecosystem.



## The impact.

As ecosystems expand through new rails, geographies, or stack consolidation, the platform scales without adding operational complexity, reducing effort, improving visibility, and shortening testing cycles.

## Contact us.

To learn more about how Fime can help your business:

[fime.com](https://fime.com)

[sales@fime.com](mailto:sales@fime.com)