

# Augmented Testing

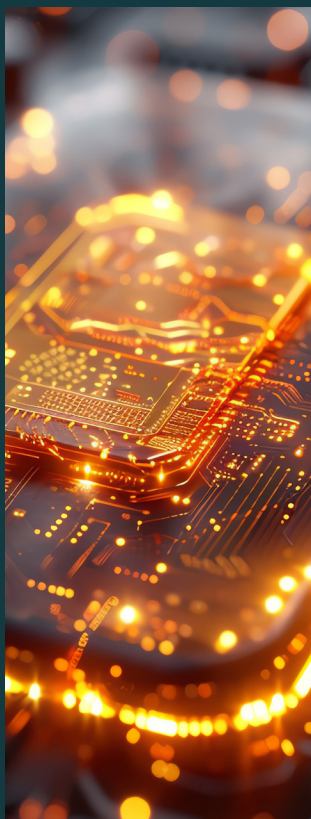
**The future of testing is predictive, continuous, augmented and intelligent. Augmented testing is not an option. It is the next generation of payment validation.**

From traditional cards to instant payments, digital wallets, stablecoins, digital identity and beyond, the ecosystem has evolved exponentially, so testing must evolve too.

- 1990 • Certification.
- 2000 • User Experience.
- 2020 • End-to-end automation.
- 2025 • Predictive testing.

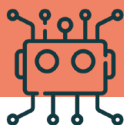
Test cases have multiplied  $\times 1000$ , complexity even more. Multiple actors, technologies, standards, and use cases create fragmented systems, limited end-to-end traceability, and time-to-market pressure.

Traditional testing is no longer enough.





# Welcome to the Augmented Testing era.



AI is not just transforming payments. It is transforming how we test them.

## Augmented testing enables:

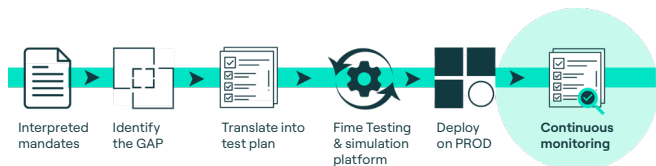
- Automatically interpreting mandates and specs.
- Detecting gaps before they become issues.
- Generating intelligent test plan.
- Extending coverage beyond certification.
- Reducing manual workload.
- Focusing expertise on high-value tasks.
- Accelerating time to market.

## Turning theory into reality

From document to production seamlessly.

## AI agents empower testing by:

- Extracting key requirements from multiple sources.
- Identifying your system's key needs.
- Defining test coverage and generating test data.
- Executing tests on across platforms.
- Accelerating time to market.
- Continuously monitoring system performance.



Contact us.

To learn more about how Fime can help your business:

[fime.com](https://fime.com)

[sales@fime.com](mailto:sales@fime.com)