



FEEDING



EMILY - ZA Les Landes - 29800 Tréflévénez - France
T. +33 (0)2 98 21 86 12 / F. +33 (0)2 98 21 86 14
export@emily.fr

www.emily.fr



SILAGE CUTTING ATTACHMENTS

MOBILE ROTOR BUCKET

HOW IT WORKS

- Designed for cutting maize, whole crop and chopped grass silage (- 6 cm).
- New model: easy to use and reliable.
- Ideal to load mixing wagons.

EMILY ADVANTAGES

- Backwards rotating rotor: optimized filling of the bucket and clean clamp face.
- Only one bucket to load silage and concentrates: time saving.
- No air-ingress, improvement of zootechnical performances
- New option : bolted adaptation



NEW



MACHINERY HANDLER	COMPACT LOADER												
	FRONT LOADER				TELESCOPIC HANDLER								
WIDTH (CM)	1,30	1,50	1,70	1,90	2,10		2,30		2,50				
USING CAPACITY (M³)	0,70	0,81	0,92	1,03	1,13	1,65	2,40	1,24	1,80	2,65	1,35	2,00	2,90
WEIGHT (KG)*	400	450	495	520	540	855	1030	590	900	1140	620	955	1250

EMILY DEFACER RANGE

Grab Rotor

High temperature & strong fermentation ← → Low temperature & weak fermentation

*The weight is not contractual.

SCIE'REX BUCKET

HOW IT WORKS

- The Scie'Rex bucket with silage defacer is designed for cutting any type of silage and fodder, even long grass silage (maize silage, chopped grass silage, grass cut by forage wagon, wholecrop, silage bales...).
- Compact bucket (easy access to narrow sheds)



EMILY ADVANTAGES

- Excellent filling capacity: +50% of loaded silage.
- Clean and smooth clamp face
- Maximize cattle rumination : the Scie'Rex improves feed quality (no disintegration of the silage)
- Versatile: suitable for handling maize and dry food.
- No air-ingress: Save money and improve cattle health using dairy fresh silage.
- Thanks to the Soft Control System (patented hydraulic control) the Scie'Rex defacer fits onto any machinery handler (regardless oil flow)



Silo clamp cutting

Silage and hay bales cutting

Mixer wagon loading

Loading the top of the clamp: patented deflector in low position

Loading the bottom of the clamp: patented deflector in high position

MACHINERY HANDLER	FRONT LOADER		TELESCOPIC HANDLER	
WIDTH (CM)	2,20	2,40	2,20	2,40
USING CAPACITY (M³)	1,20	1,90	1,20	1,90
WEIGHT (KG)*	720	970	720	970

ROTOR ON FRAME

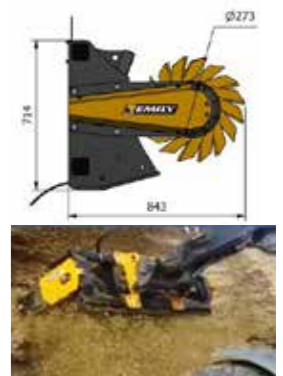
HOW IT WORKS

Ideal to cut large quantities of Silage (designed mainly for maize silage).



EMILY ADVANTAGES

- Double driving with series powerful motor.
- Durable and secure driving thanks to the Square Drive System.
- Reinforced structure with rotor in Hardox 8mm



*The weight is not contractual.

SMARTPHONE ASSISTED APP FOR SILO CUTTING!

Available on the **App Store** **Get it on Google play**

CUTTING

MOBILE ROTOR



Vega Omega Melodis Dis'Fib

EMILY ADVANTAGES

- The clamp face is clean.
- Rotor blades are efficient in maize, precision chopped grass silage, whole crop.
- 2 rams on the whole range.
- Backwards rotation for an optimized filling.
- No air-ingress, improvement of zootechnical performances

Inversion direction kit



HYDRAULIC GRAB



EMILY ADVANTAGES

- New concept of the grab: an optimized cutting angle of the silage clamp.
- 2 rams on the whole range for a resistant assembly.
- Versatility: it can be used to handle a hay bale without hitching another equipment.



MIXING AND DISCHARGING

HOW IT WORKS

Melodis max

- The Melodis mixer feeder bucket has been especially designed for mixing and feeding a Total Mixed Ration.
- It can be equipped with a grab or a mobile rotor.
- Right and left distribution is available.
- The double driving of the spiral mixer permits a better strain repartition.
- The mixer bucket also discharges silage. Fits onto machinery handlers. Available from 0.9 m³ to 7.5 m³.



Automatic mixer inversion kit

EXCLUSIVITY

HARDOX



up to 50% chopped grass silage



NEW

EMILY ADVANTAGES

- HARDOX structure for a strong and light bucket. Optimized volume.
- Easy to handle and safe (excellent visibility from the cab).
- Versatility: designed for dry food/maize/chopped grass silage (maximum 6cm length)...
- Economical, cost effective: 1 machinery handler only to cut, mix, feed.
- Fast and precise mixing/feeding.
- No disintegration of the ration.
- Large opening door: important distribution flow.
- Fits onto any machinery handler.



Available up to 7.5 m³ !

The best mix with a very good value for money

«No fuel consumption ! There is only one loader running, so we save hours.»



Romain MAILLAULT
French breeder,
380 beef cattle



INTERVIEW OF A MELODIS USER



Michel MAUDIRE is a beef cattle breeder with a herd of 250 beef cattle. Since 2010 he has been using a Melodis mixer bucket from the Emily range.

Why did you choose an Emily Melodis mixer bucket?

I was looking for something cost effective and time efficient. When I saw a press article about the Melodis explaining that with only one attachment on my telescopic handler you can cut, mix and discharge, it convinced me that I no longer wanted to invest into a mixer wagon. I bought a 3.2 m³ Melodis with a mobile rotor and now I save money as maintenance and fuel expenses have considerably decreased thanks to the use of only one telehandler.

Which type of ration do you distribute with the Melodis?

The mixing is composed of 50% of chopped grass silage, 50% of maize silage, dry food and chopped straw. I first load the dry food and the chopped straw, then the precision chopped grass and the maize silage. Within 3 minutes the mixing ration is ready. With one bucket I can feed 30-35 animals which means 7 to 8 buckets a day.

What are the main differences between your new working way and the previous one ?

Handiness first of all, comfort and visibility too: the bucket is fitted on my telehandler thus I can see what I am doing and I can easily enter the shed. The mixing is impressive and the feeding is faster. It is also a solution for leaving a clean silage clamp face.

Stainless steel sheet (optional)

EMILY ADVANTAGES

- Optimized bucket life
- Improved food hygiene



Innov space

up to 100% chopped grass silage

NEW



Mixer 100

melodis 100% CHOPPED GRASS SILAGE

HOW IT WORKS

A version of the MELODIS is available "100% CHOPPED GRASS SILAGE" thanks to its spiral mixer made in Hardox (Melodis 100).

This new model has been especially designed for mixing and feeding chopped grass silage (maximum 6 cm length) for a Total Mixed Ration (maize, grass, dry food) and optimizes the ration incorporating fiber (short straw).

EMILY ADVANTAGES

- Total versatility of the bucket: mixes and discharges 100% chopped grass silage, maize or a Total Mixed Ration incorporating fiber without disintegration. Quantity of ration can be adjusted depending on the type and age of herd.



THIS IS THE FREE SMARTPHONE ASSISTED APP FOR SILO CUTTING!

- Calculate the daily rations precisely and manage the distribution of the mixtures in a bucket or mixing wagon.
- Ergonomics: A few minutes are enough to manage all rations of your cattle.

Available on the App Store

Get it on Google play

FEEDER BUCKET WITH CONVEYOR CHAIN

DIS'FIB FEEDER BUCKET: WITH A CONVEYOR CHAIN

HOW IT WORKS

- The Dis'Fib fits onto telescopic handlers and front loaders of tractors. It is especially designed for grass cut by forage wagon and for chopped grass, maize silage...



Agitating roller with hydraulic opening door: regular and fast feeding.



Concentrate feeder: for an even and precise feeding

SCIE'REX Silage defacer :

Clean and smooth clamp face, even at the bottom of the silo clamp (up to 2.60m width).

Excellent filling capacity: +50% of loaded silage



Secufeed concept: the hydraulic door avoids any interference with external elements as it is completely integrated into the shape of the bucket



EMILY ADVANTAGES

- Patented agitating roller with opening door: its innovative design and conception optimize the complete discharge of the bucket and ensure a regular and fast feeding.
- Secufeed hydraulic door: comfort and maximal safety for the user.
- Versatility: Discharge grass cut by forage wagon and chopped grass silage, maize silage, fodder beet...
- Fast, efficient and quality.
- Suitable on front loader and telescopic handler.
- Perforated steel on the back for an optimal visibility.
- Removable stainless steel sheet (optional). Corrosion resistance.



MACHINERY HANDLER	COMPACT LOADER			FRONT LOADER						TELESCOPIC HANDLER				
				3RD POINT - FRONT/REAR										
WIDTH (CM)	1,30	1,50	1,70	2,00	2,20	2,40		2,60		2,80		2,80		
WORKING CAPACITY (M³)	1,30	1,50	1,70	1,40	1,60	1,90	1,70	2,00	2,50	3,00	2,30	2,80	3,40	3,70
WEIGHT* (KG)	420	490	550	640	700	884	770	913	976	1040	963	1029	1096	1168
SCIE'REX OPTION	NA	NA	NA	NA	NA	NA	NA	NA	YES	YES	NA	YES	YES	NA

*The weight is not contractual.

FEEDER BUCKET WITH AN AUGER

THE NEW RANGE

HOW IT WORKS

- The new range of VegaMax feeder buckets allows distribution of maize silage and concentrates ... Durability, robustness, reliability



Uniform auger, without central bearing.

TECHNICAL SPECIFICATIONS



High speed discharge system



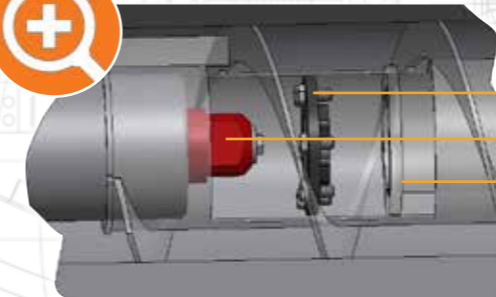
Protective pad on opening side



Rotor position indicator



8 mm shell on Omegamax (3 mm extra) mm. Option: stainless steel shell on sides 2, 3 and 4



SQUARE DRIVE SYSTEM

- Interface plate
- Square push-fit
- Auger body

EXCLUSIVE : Easy to disassemble, durable reduction gear box, reliable drive mechanism

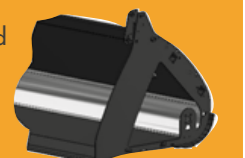
OPTION



Root chopper - option
Please contact us

EMILY ADVANTAGES

- Optimized your feed costs: save 10€ on an average of 1000L with an Emily feeder bucket compared to another type of feeding equipment
- Robustness and durability of the bucket and of the screw drive
- Optimize your working comfort
- Technical simplification for dealers
- Distribution to the right and left (optional / patented)
- Fits onto any machinery handler (from compact loader <1,5T to the biggest telescopic handler)
- Wide range : 69 models of Vega'Max and 45 models of Omega'Max
- New option : Stainless steel sheet for an optimized bucket life and improved food hygiene



DRY FOOD RANGE

DUO-MIX TO MIX AND DISCHARGE DRY FOOD

HOW IT WORKS

- The Duo-Mix mixes and discharges dry food without fiber.
- Doubled inversed auger for mixing and distributing.

2 MODELS:

- Duo-Mix Bucket for loading with the bucket.
- Duo-Mix Tank for loading under silo (Option: weighing system).

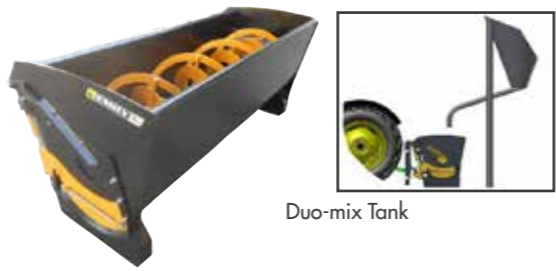
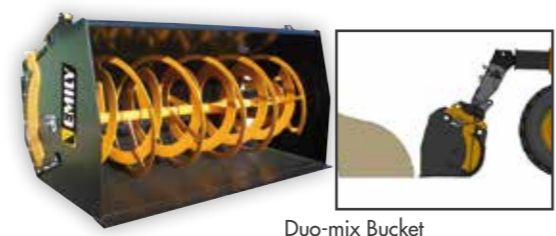
78 models available.

EMILY ADVANTAGES

- A 30-second mixing without denaturing the aliments.
- Right and left distribution is available.
- Can be fitted to rear linkage, front loader and telescopic handler.
- Extension chute in option.

SMARTPHONE ASSISTED APP FOR SILO CUTTING!

Available on the App Store | Get it on Google play



DRY FOOD RANGE

DRY FOOD MIXER FEEDER TANK



HOW IT WORKS

- The Pick&Go fork carrier of the Mix&Go can also be used with other Emily attachments.
- Designed for front loader, rear linkage, telescopic handler and compact loader.
- The Mix&Go mixer feeder tank is designed to mix and distribute dry food: meal, rolled cereals, maize grains, pulp, minerals...
- 2 models available: front left or front right

EMILY ADVANTAGES

- Simplicity: The Mix&Go mixer feeder tank needs only one double acting spool to mix and discharge a dry food ration.
- Performance: Fast and precise mixing/feeding
- Compact attachment to feed in any building with difficult access.
- Fits onto rear linkage of tractors, front loaders, compact loaders and telescopic handlers.
- Reliability: low maintenance, flexible chute, proven bale fork carrier.

MECANIC SHOW 2018

PATENTED PRODUCT

2018 Innov SPACE

You already have a Pick&Go bale unroller? Your bale fork carrier fits onto the Mix&Go! Unroll bales and feed dry food without getting out of the cab!



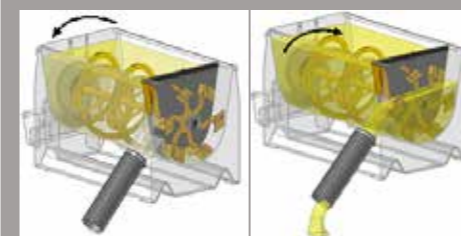
Weighing system (available on the Duo-Mix tank)



Working of the paddle wheel:

The Mix&Go tank works with one double acting spool and is composed of two parts: one part with the mixer and one part with a paddle wheel for the distribution.

No leakage occurs during the mixing and the paddle wheel enables a constant distribution.



Works with 1 double acting spool:
-1 mixer direction -1 distribution direction [opposite to the mixer]



MACHINERY HANDLER	COMPACT LOADER														
	FRONT LOADER				TELESCOPIC HANDLER						3RD POINT - FRONT/REAR				
	1,30	1,50	1,70	2,00	2,00	2,40	2,40	2,60	2,00	2,20	2,40	2,60	2,00	2,20	2,40
MIXING CAPACITY (L)	390	450	700	510	800	600	940	700	1100	2000	780	1200	2200		
WATER CAPACITY (L)	530	610	900	700	1000	820	1200	960	1400	2530	1060	1560	2800		
WEIGHT (KG)*	320-315	380-375	550-540	420-415	590-580	450-445	660-650	480-475	730-720	1090-1070	560-555	800-790	1150-1130		

FEEDER BUCKET FOR DRY FOOD

HOW IT WORKS

- Rehandling bucket with auger screw.
- Hydraulic door synchronized with distribution with opening stops.
- Standard flow regulation plate.



*The weight is not contractual.

EMILY ADVANTAGES

- Versatility: enables the discharge of dry food and maize silage.
- Economical solution.
- The new Vega C'Max benefits from all the advantages of the new Max range : robustness, longevity and ease of use

MACHINERY HANDLER	COMPACT LOADER					
	FRONT LOADER			TELESCOPIC HANDLER		
	3RD POINT - FRONT/REAR					
WIDTH (M)	2,00	2,20	2,40	2,00	2,20	2,40
CAPACITY (M³)	1,1	1,3	1,9	1,4	2,0	2,5
WEIGHT* (KG)	560	590	680	610	710	830

*The weight is not contractual.

FEED PUSHER RANGE

▶ SILO BUDDY

It moves feed back to the feed barrier. Very easy to use, it fits onto buckets in a few seconds without getting off the cab.

- Adjustable and reversible wearstrip thickness 25mm
- Size mark visible from the cab - Height 500mm / Angle 60°

EMILY ADVANTAGES

- Mechanize a daily task.
- Your bucket becomes versatile.
- It fits on both sides – right or left: for every building there is a solution.



	FRONT LEFT	FRONT RIGHT
INSIDE WIDTH (MM)	835	835
WEIGHT*(KG)	85	85

▶ PICK & GO SILAGE PUSHER

The Silage Pusher pushes feed along feed barriers (silage, hay...) on the right or left hand sides. It fits the Pick & Go bale fork carrier and any bale fork on the market.

- Right and left
- Adjustable rotation center
- Pneumatic mounting from 28 to 38 inches
- Adjustment and tightening tyre on support holder
- Sealed hub without lubrication



EMILY ADVANTAGES

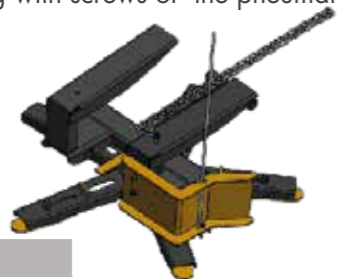
- Convenience, sturdiness: maintenance free. It fits the Pick & Go Bale Fork and most bale forks of the market.
- Fast and convenient: right and left working.

WEIGHT*(KG)	100	100
Ø INSIDE SLEEVE	60 mm Operating recommendation with Ø45 tine	145 mm Fork max. 125X50

▶ ROTO'NET

For fibrous rations. It fits onto buckets in a few seconds without getting off the cab.

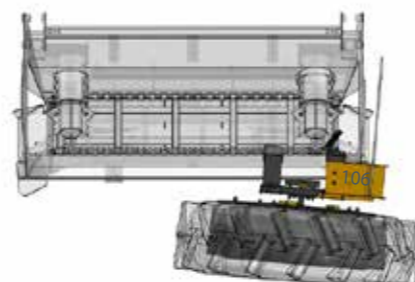
- Right or Left
- Rotation stop by automatic lever when unhitching
- Pneumatic mounting from 28 to 38 inches
- Adjustment and tightening with screws of the pneumatic on the support holder



WEIGHT*(KG) 110

EMILY ADVANTAGES

- Mechanize a daily task.
- It fits onto buckets in a few seconds without getting off the cab.



BALE UNROLLER

▶ BALE UNROLLER



HOW IT WORKS

- The Pick & Go Bale Unroller unrolls round bales (wrapped bales, alfalfa, hay...).
- 3 models:
 - Right
 - Left
 - Right and left



NEW



STANDARD EQUIPMENT

- A 20 galvanized hangs belt and teflon guide under the chain
- Removable sides (for Right and Left versions)

EXCLUSIVITY

- Seal flap

OPTIONS

- Bale retention kit (for unregular bales)
- Removable sides (for Right or Left Pick & Go versions)

▶ DELTA BALE UNROLLER

HOW IT WORKS



- Designed for telescopic handler, front loader, front and rear linkage.
- The Delta Bale Unroller can be used for feeding wrapped bales, hay and straw.

EMILY ADVANTAGES

- Convenience: optimized offset, compact height, cut out side frame for an excellent visibility from the cab.
- Easy load system: self loading door with hydraulic telescopic arm for an automatic adjustment to any bale diameter.
- Versatility : unrolling of bales from 1,00m up to 1,80m diameter

The bale can be loaded in several ways: stationary or hydraulic loading door. The unrolling is possible thanks to a conveyor chain with adapted teeth.

Speed can be adjusted on the unroller itself or from the cab (electric remote control box in option).

STANDARD EQUIPMENT

- Conveyor chain driven by a hydraulic motor
- Conveyor chain with roller chain
- Removable adaptation (telescopic handler, front loader and 3rd point hitching)

OPTIONS

- Electric remote control box in the cab with a conveyor chain speed variator
- Synchronized loading arm
- Hydraulic offset (+/-300mm)



