

Comfy

Bristle Buddy

Enhances the welfare of
your goats!



Cherish Your Goats

You work on keeping your goat herd healthy every day. Our Comfy goat brushes assist you in achieving that, making sure your goats feel even more comfortable!

The goat brushes contribute to the welfare and health of your animals. Goats that use our brush are much cleaner than goats that cannot use the brush. The Bristle Buddy helps remove dirt, loose hair, and parasites. As a result, goats experience much less itching and irritation. They feel more comfortable and less stressed.

Bristle Buddy Goat Brush

Our goat brush is known for its sturdy construction. This is important because we know that goats can be quite mischievous. If they see something moving or something they can nibble on, they will definitely do so. Since all vulnerable parts are fully integrated into the brush and the steel housing, goats cannot destroy anything and can only use the brush for its intended purpose.

Thanks to our unique motion sensor, the brush starts rotating when a goat approaches. This prevents goats from nibbling on a stationary brush, prolonging the lifespan of both the brush and the bristles.

Technical Information

Dimensions	660 x 310 x 2007 mm
Brush Diameter	∅ 310 mm
Brush Length	480 mm
Power Supply Type	110V 60Hz / 230V 50Hz
Power Consumption	0.12kWh
Weight	40 kg
Speed	58 rpm
Rotation Direction	Left / Right

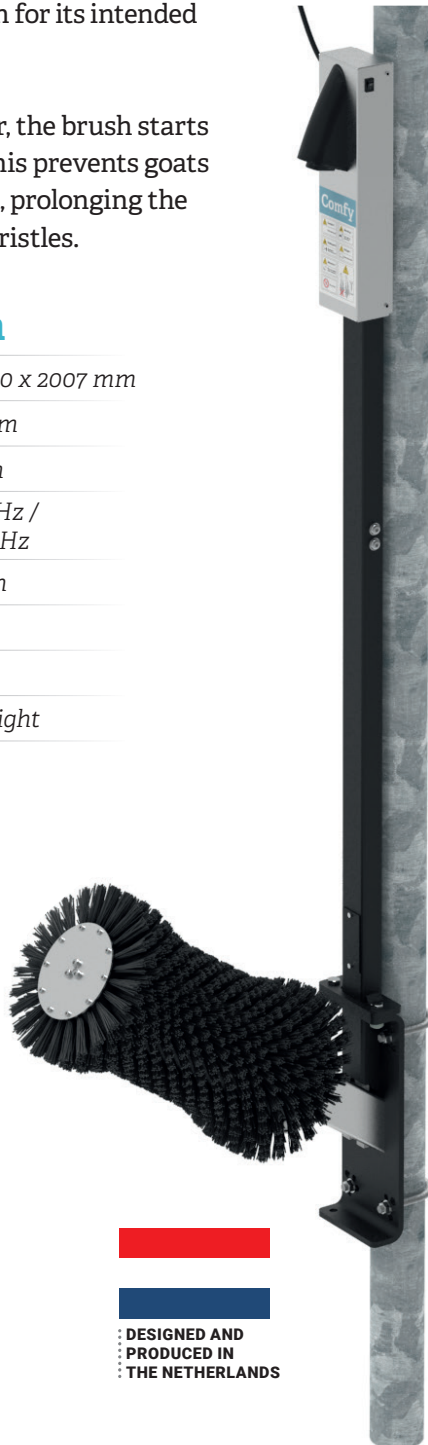
Comfy

Veenderveld 43A
2371 TT Roelofarendsveen
Nederland

T: +31 (0)71 205 4000
E: info@comfy-solutions.com





DESIGNED AND
PRODUCED IN
THE NETHERLANDS



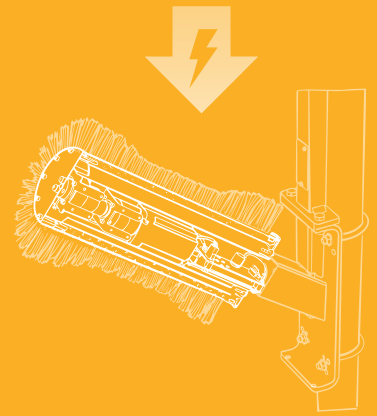
LOW ENERGY CONSUMPTION

Due to our efficient 24V, 3 phase motor, Comfy brushes have a low energy consumption.


No load
operation
0.04kWh

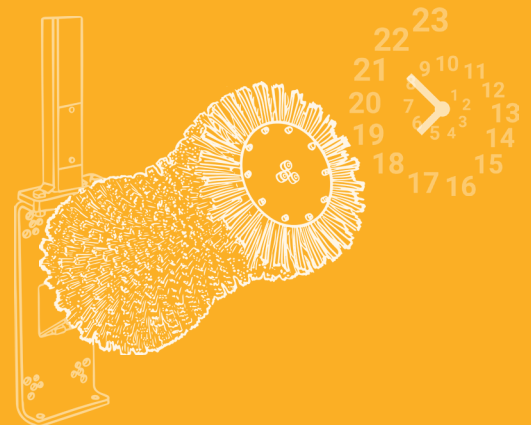

Normal
load
0.12kWh


Maximum
load
0.3kWh



RELIABLE

By minimizing moving parts, our goat brush is goat-resistant. This allows our goat brushes to rotate an average of 23 hours a day, year after year.



MOTION SENSOR

The Comfy goat brush activates immediately when a goat approaches, preventing the goats from nibbling on the stationary brush.

