

Can SocOps and Compliance keep up with the changes?

Nearly 50% alerts are false positives

caused by the inability to prioritize due to the lack of additional data sources.

[Gartner's "Critical Capabilities for SIEM", 2022]

52% can't estimate business risk

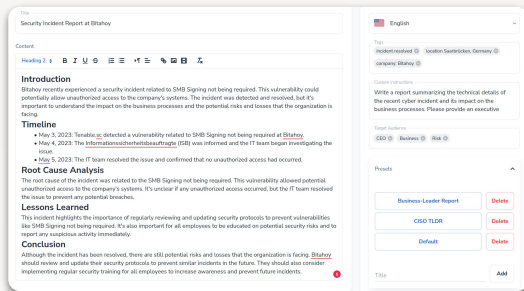
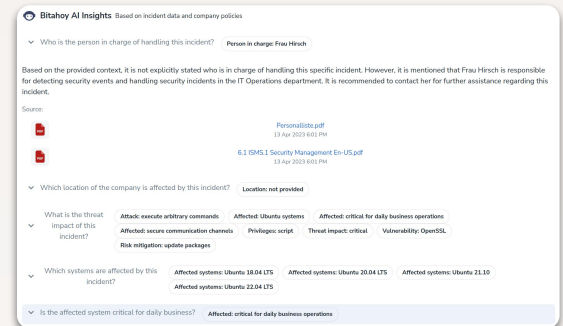
citing a lack of AI-based tools, which would secure compliance cost savings not previously possible.

[Accenture's "Compliance Risk Study", 860 organizations, 2022]

Bitahoy enables organizations to prioritize cyber risk and improve security management decisions by integrating business context into existing security operation processes

Streamline the response

Leverage data from multiple sources into clear, actionable insights, allowing you to respond to incidents quickly and effectively, reducing the risk of costly cyber-attacks. Connect your issue-tracking and communication tools such as Jira, ServiceNow, Slack, and Microsoft Teams, to easily automate assessments, evidence collection, reminders, and escalations.

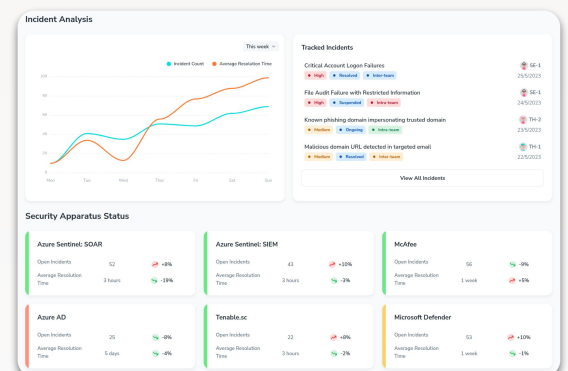


Translate the impact

Effectively convey the significance of cyber risk to all levels of your organization, facilitating collaboration and compliance. Provide a comprehensive view and enhance reports with insights from ISMS, ITSM and Governance docs such as risk analysis, security requirements, internal audits, BCM and Process-modeling.

Reduce the risk

Finding the most relevant loss scenarios can be a challenge, especially for organizations with limited data or less mature security programs. Bring business context into security telemetry tools such as Tenable, Qualys, Rapid7, and Microsoft Defender, enabling you to focus on the incidents that matter the most, helping your team make the most impact and keeping your organization secure from cyber threats.



Ready to take the guesswork out of cyber risk and start prioritizing based on business-impact? Get in touch at contact@bitahoy.com



Bundesministerium
für Bildung
und Forschung



TechQuartier

CyberLab
HIGHTECH. GRÜNDER. SCHMIEDE.