

CSEM is an internationally recognized Swiss technology innovation center developing disruptive technologies with a high societal impact, which it then transfers to industry.

MISSION

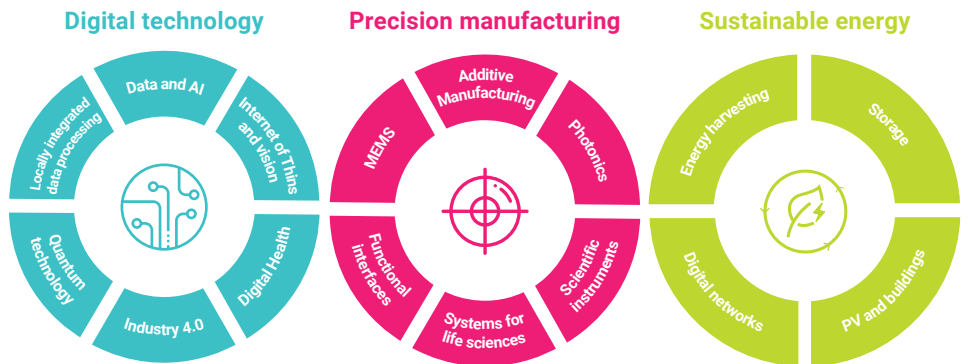
As a public-private, not-profit organization, the mission of CSEM is to support the innovation of Swiss companies and strengthen the economy through ongoing collaboration with industrial part-

ners, leading universities and research institutes. The company acts as a bridge and catalyst for the efficient transfer of technology and expertise between science and the economy in Switzerland,

continually adapting its research focus to meet industry needs. This constant re-adaptation has taken the center far beyond its historic ties with watchmaking.

FIELDS OF ACTIVITY

CSEM operates in digitalization, precision manufacturing, and sustainable energies. With six sites across Switzerland, located in Allschwil, Alpnach, Bern, Landquart, Neuchâtel and Zurich, we offer regional points of contact for all CSEM activities and services. Our center is internationally recognized for technology innovation and is an essential player in promoting Switzerland's competitiveness.



DIGITAL TECHNOLOGY



CSEM helps companies' transform their digital ambitions into real products by providing innovative solutions for the Internet of Things, wearables, edge computing, AI, and Industry 4.0. As part of this research, we continuously adapt our research focus to the needs of industry. This constant adaptation has taken the center far beyond

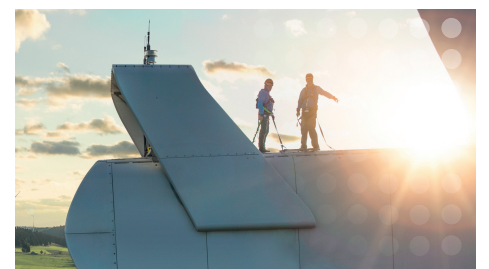
its historical ties to the watch industry. It now contributes to more personalized healthcare, smarter energy systems, safer production processes, and quantum technologies that achieve unprecedented levels of sensitivity and accuracy.

SUSTAINABLE ENERGY

CSEM believes it is possible to create energy systems that meet the needs of today without compromising the future. That's why interconnected, integrated CSEM energy management solutions preserve the natural environment, promote economic development, and drive innovation across the energy sector.

These innovations are driving broader adoption of renewable energy, such as smart grid automation and storage, which enable greater energy savings and improved performance of solar PV systems.

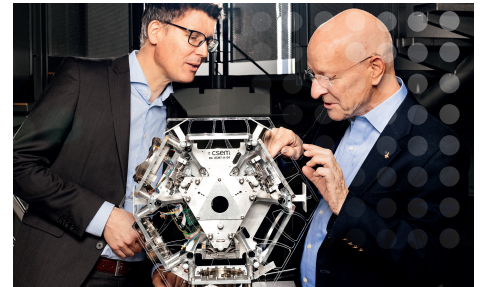
One exciting approach is photovoltaics integrated into vehicles or watches.



PRECISION MANUFACTURING

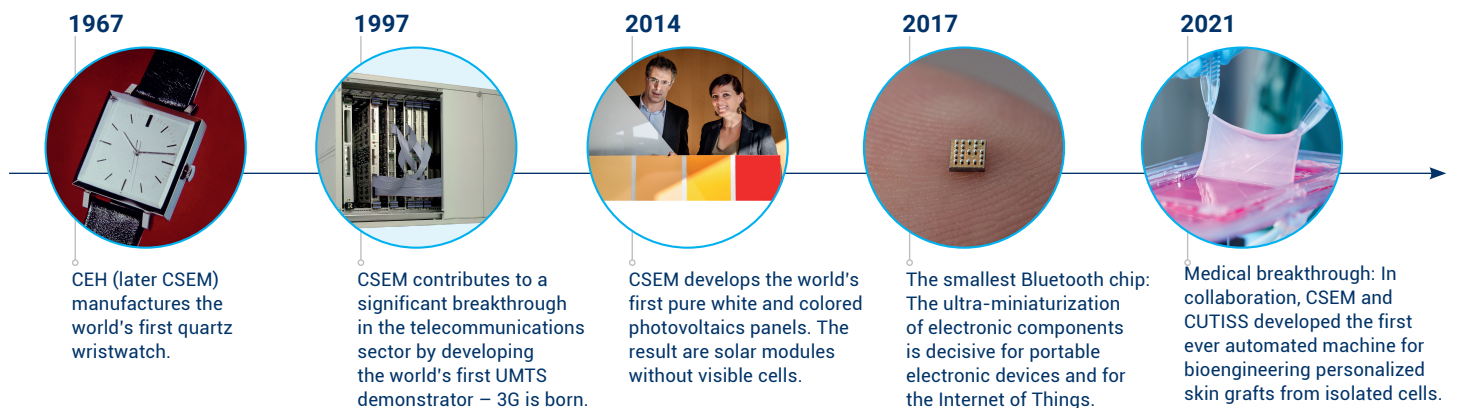
Systems and devices used daily are becoming smaller and smaller, and must be able to do more with less energy. In the area of precision manufacturing, CSEM's experts are pioneering technologies such as 3D printing, lasers, sensors, surface coating coatings and robotics. They also help companies in Europe develop highly specialized products and introduce flexible, autonomous, and advanced produc-

tion systems. For example, CSEM has developed the world's first machine for manufacturing human skin. It has also developed a laser test for NASA to gain insights into the structure of black holes and the evolution of the universe.



Alexandre Pauchard, CEO and Claude Nicollier, Chairman of the Board

FIVE CSEM WORLD FIRSTS



A VIBRANT WORKPLACE FOR THE WORLD'S MOST TALENTED, TECH-SAVVY PEOPLE



Entrepreneurial spirit



Cutting-edge technologies



More than 40 nationalities



Dedicated to diversity and inclusion



JOIN US



Browse our open positions



Start-up booster grant

LEARN MORE



Annual report



Latest press releases



jobs@csem.ch
csem.ch