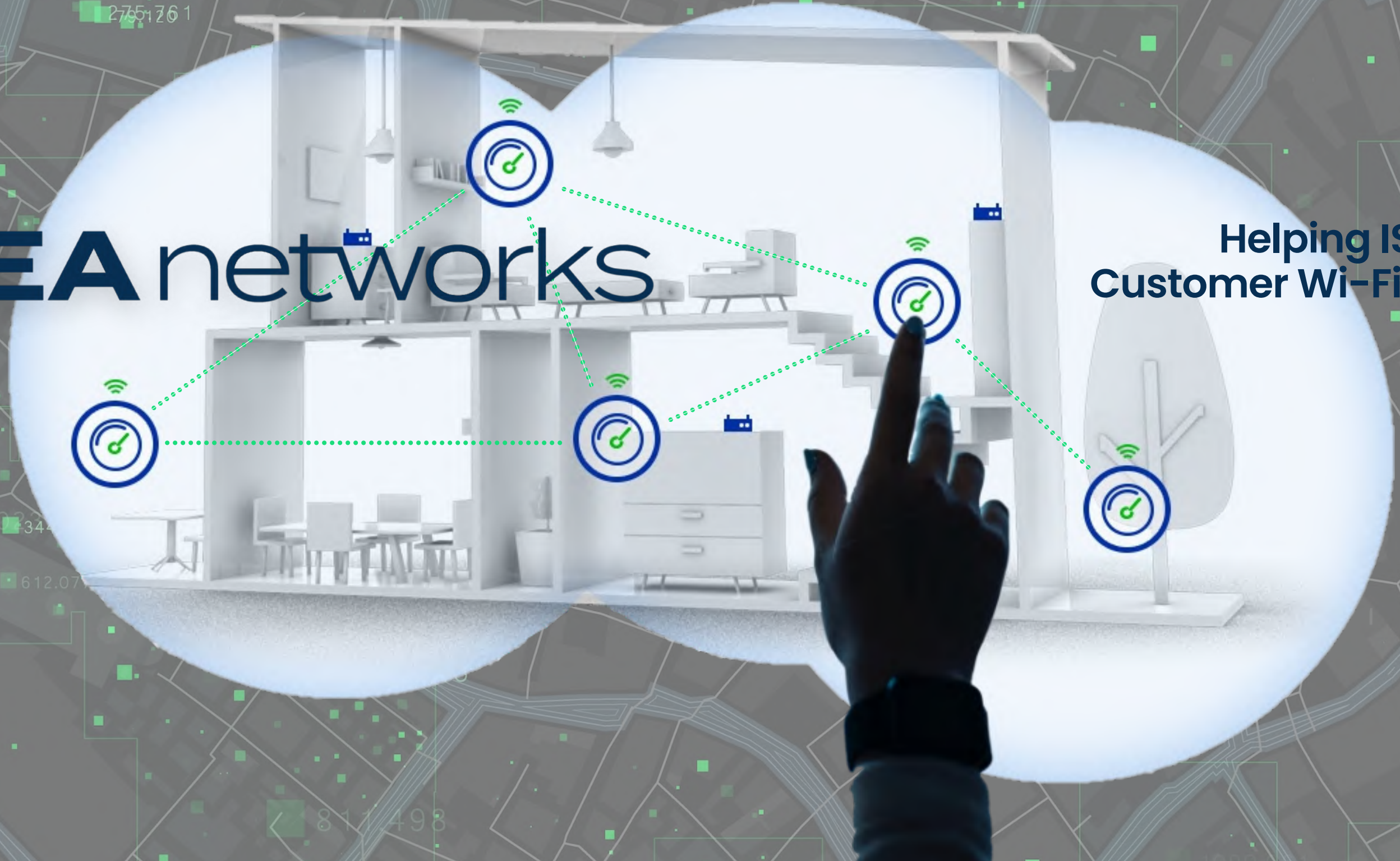


# TEA networks

Helping ISPs to Exceed  
Customer Wi-Fi Expectations



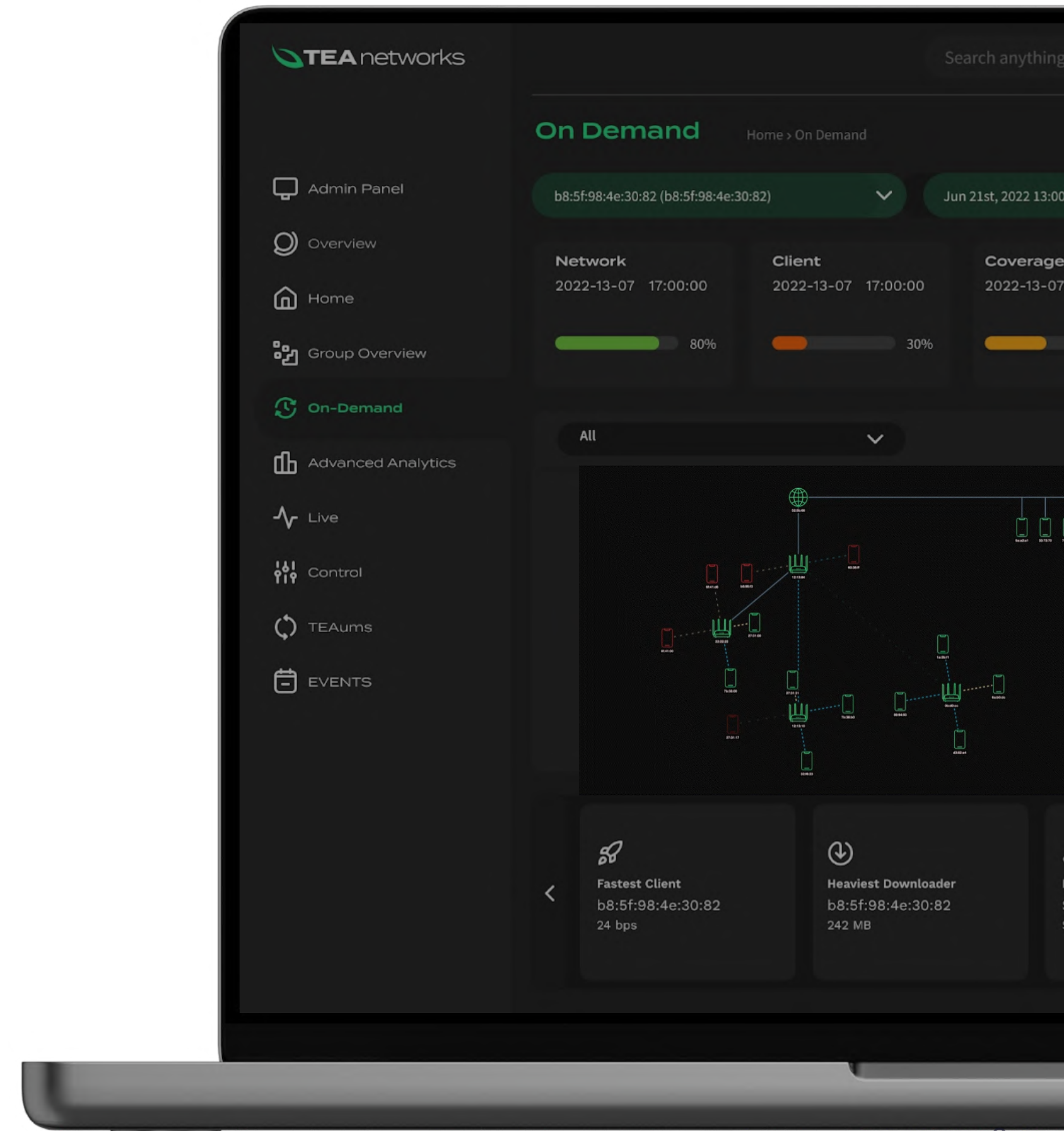


# About us

TEA Networks, established in 2018, offers an innovative **AI-Ops solution** for **managing in-home Wi-Fi QoS**. We eliminate Wi-Fi operation complications for ISPs with **AI-based WiFi Assurance** that simply works.

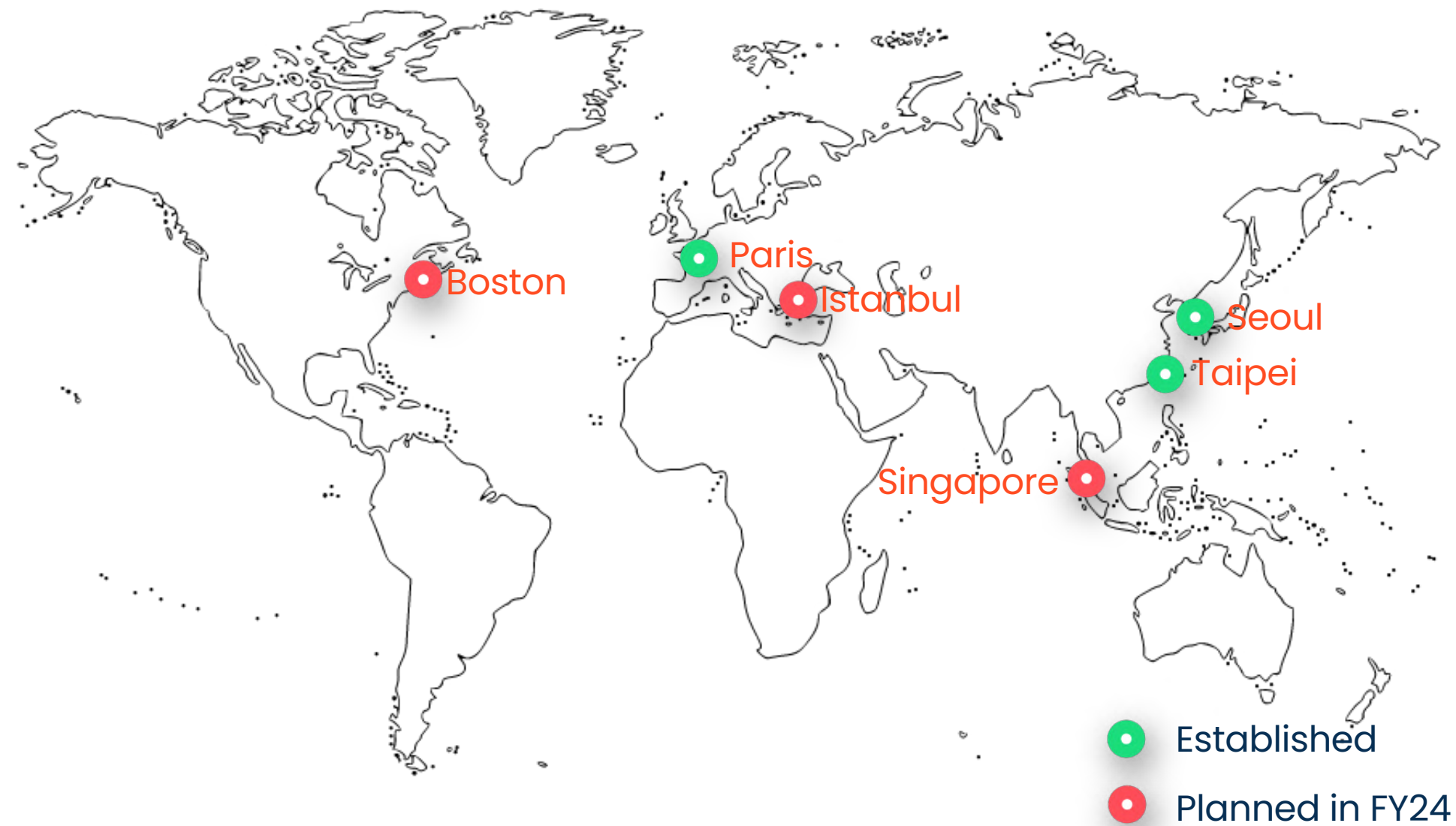
Our advanced technology not only predicts potential Wi-Fi disruptions but also **proactively manages Wi-Fi connectivities** for an exceptional user experience while also identifying upsell candidates to boost ARPU.

As a true domain expert in Wi-Fi management technology, we are recognized as **the industry leader in providing mission-critical Wi-Fi QoS AI software solutions** to ISPs and CPE companies.



# TEA locations

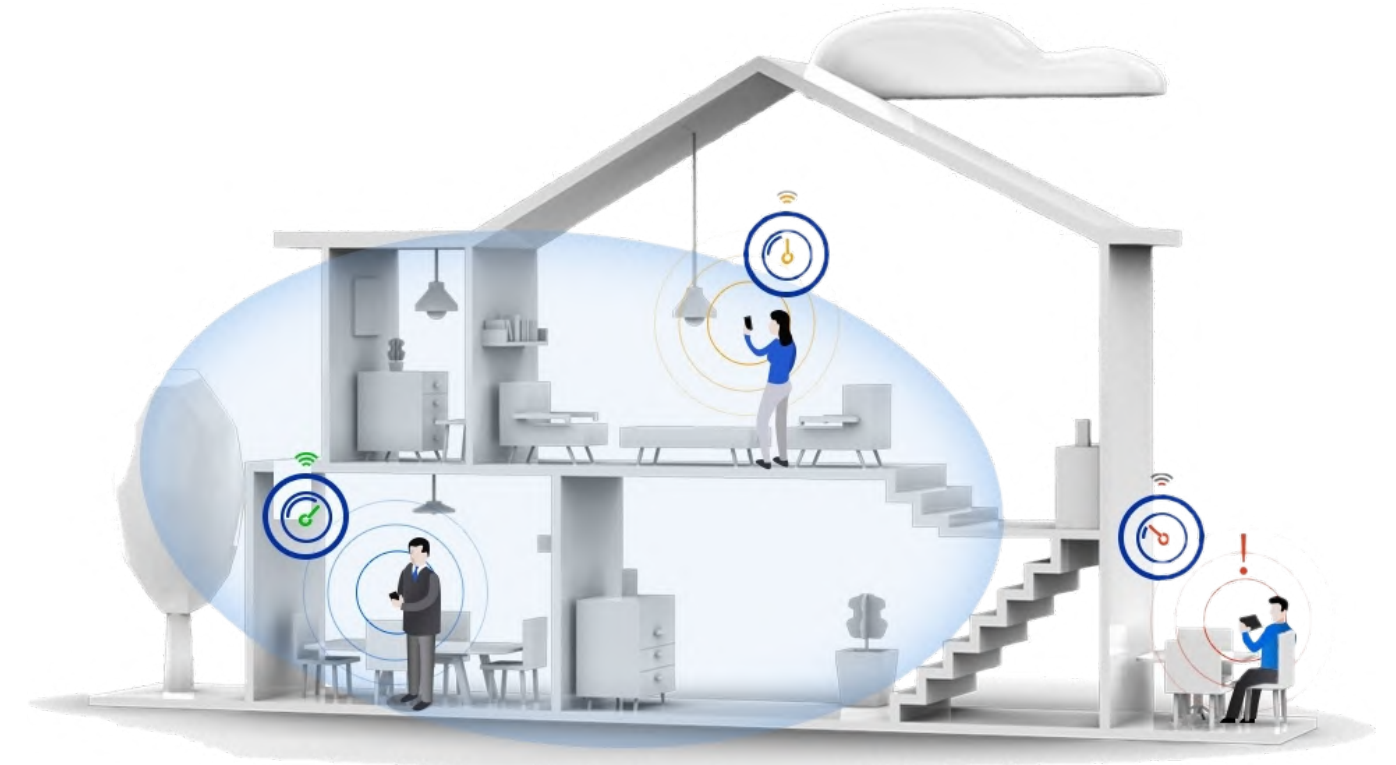
TEA Networks is here to serve you to **elevate your broadband offerings.**





# The problem

In-home Wi-Fi networks became not only common but also necessary for our comfort. We use Wi-Fi on our devices to connect to the world and losing this connection sometimes seem disastrous.



Data Consumption increasing Exponentially



High Expectation On High Speed Internet



Video Calls HD Contents Exploding



Connected Devices On the rise



Multiple CPEs to Maintain



Unapproved 3rd party Equipment

## Problem

- Wi-Fi network environments are complex and difficult for ISPs to maintain and operate as the home gateway is the last terminating point for network visibility.
- ACS provides just standards-compliant Authentication, Authorization, and Accounting (AAA) services to network.

## Challenge

- Providing Wi-Fi to the Whole Home
- Accessing data from partitioned hardware and software
- Delivering Faster Speeds
- Enabling Self-Management and Self-Healing

## Negatives

**26 min**

Average length of customer support calls

**35 %**

Wi-Fi related calls require to send technicians

**\$2.6 Bn**

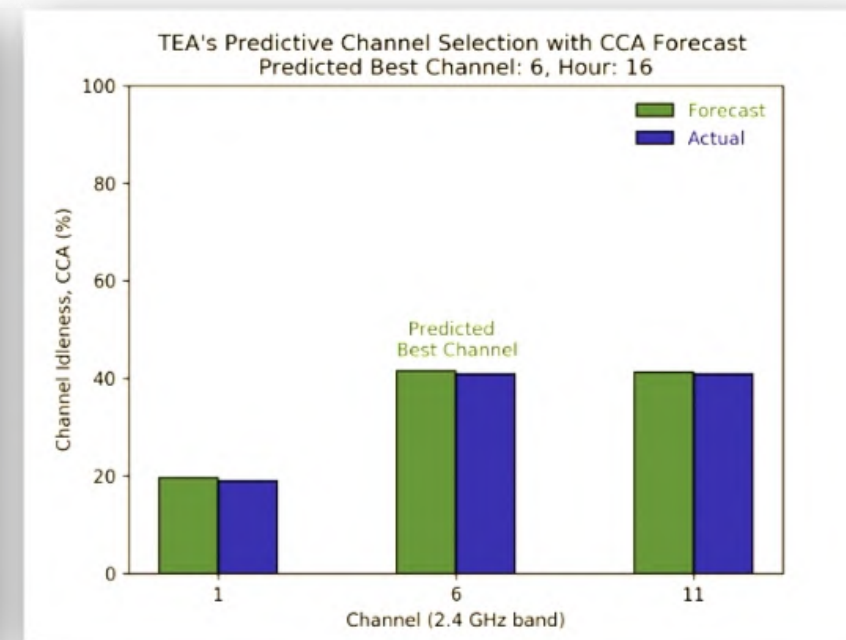
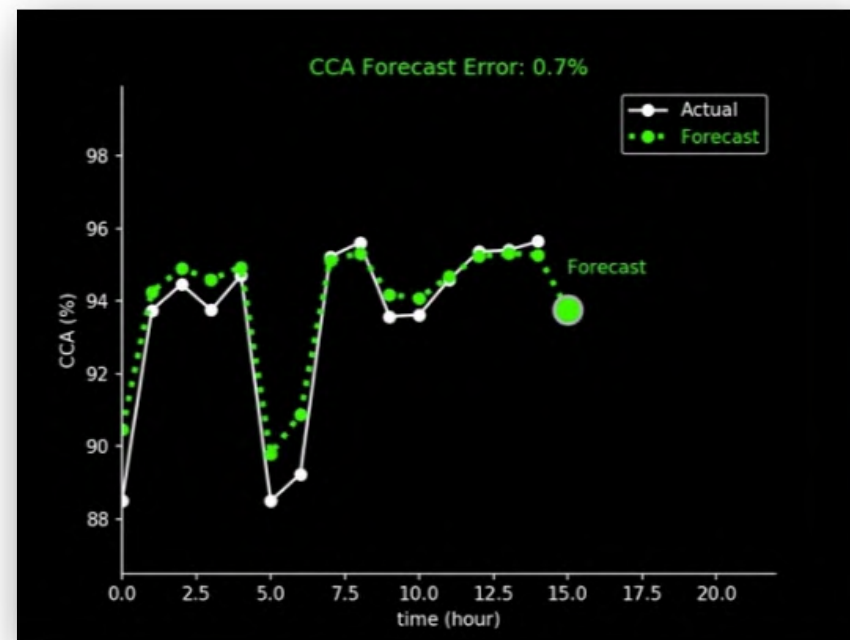
Wi-Fi related support cost in the US and EU

Survey conducted by Nokia\*

# The solution

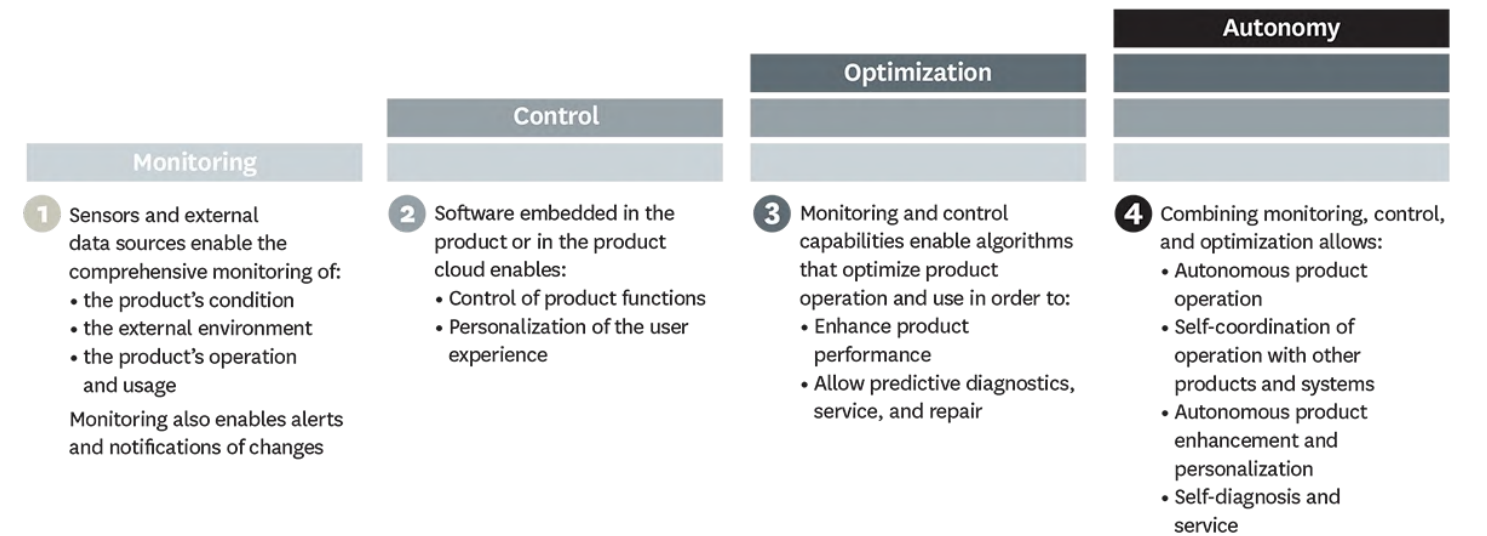
Our solution TEApot (TEA Predictive Optimization Technology) is an answer to Wi-Fi problems. Through real-time monitoring process, TEApot predicts failures and solves problems before they happen.

## Underlying magic of TEApot



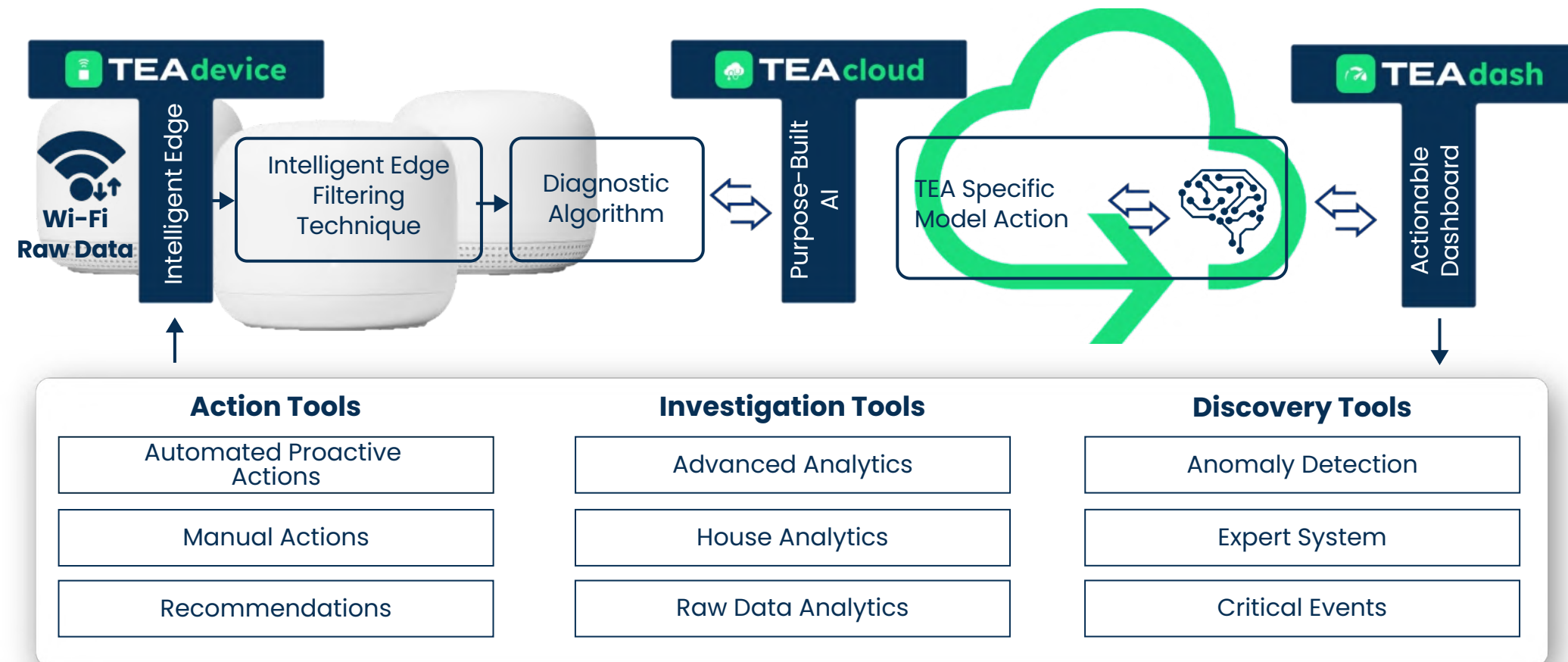
Efficient AI channel prediction calculates the best available Wi-Fi channels to operate 1 hour in advance and it helps manage the critical wireless infrastructure that predicts failures and solves problems before they happen.

### Monitoring Control Optimization Autonomy





# How TEApot work?



## Robust Performance

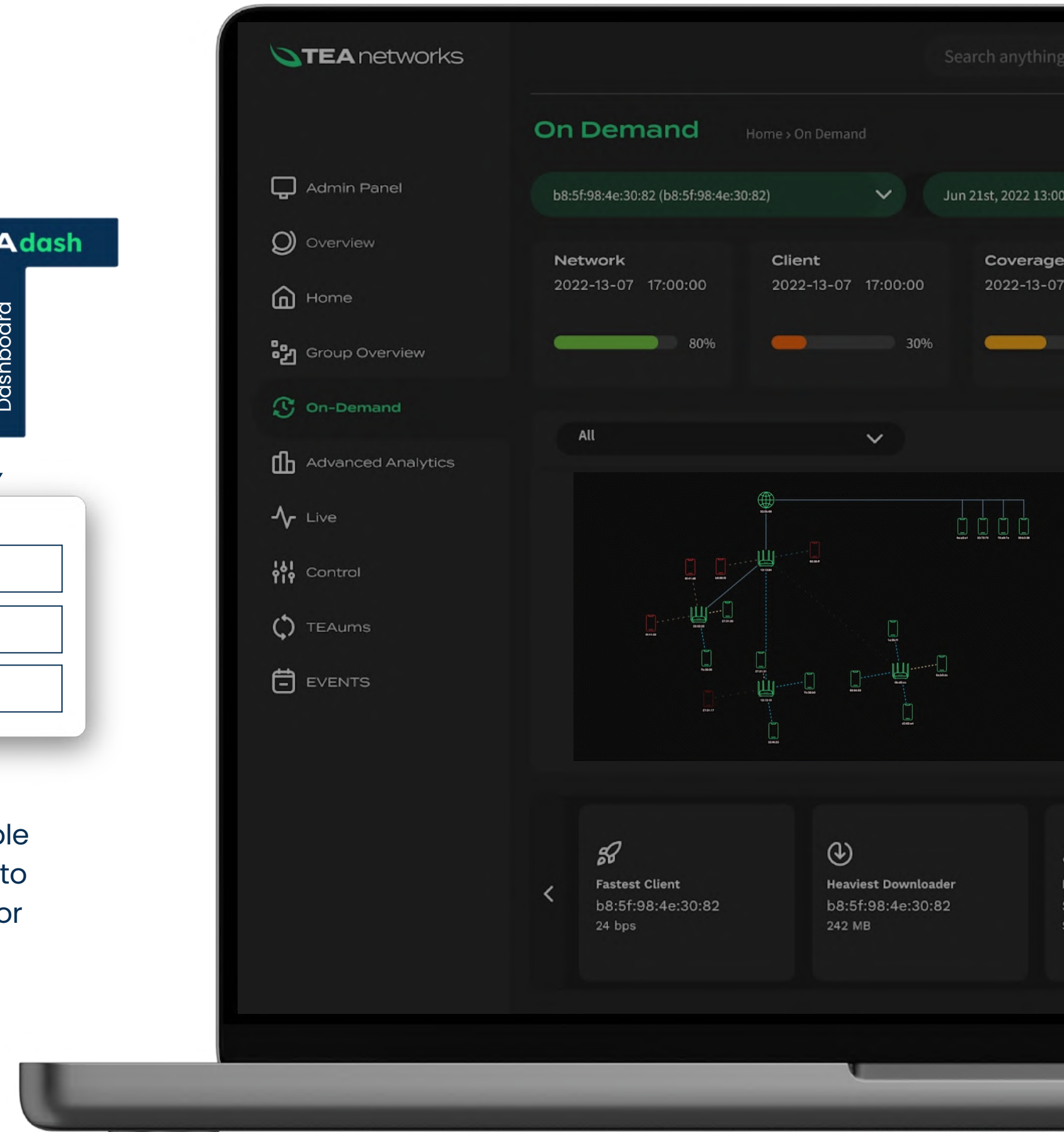
Best-In-Class performance by having Intelligent Edge on the devices that works tandem with the purpose-built AI cloud

## Highly Scaleable

Any size of deployment and can be deployed on any cloud or on-prem with configurable data size modeling

## Fully Customizable

Completely re-configurable for call centers personnel to company management for KPI measurements







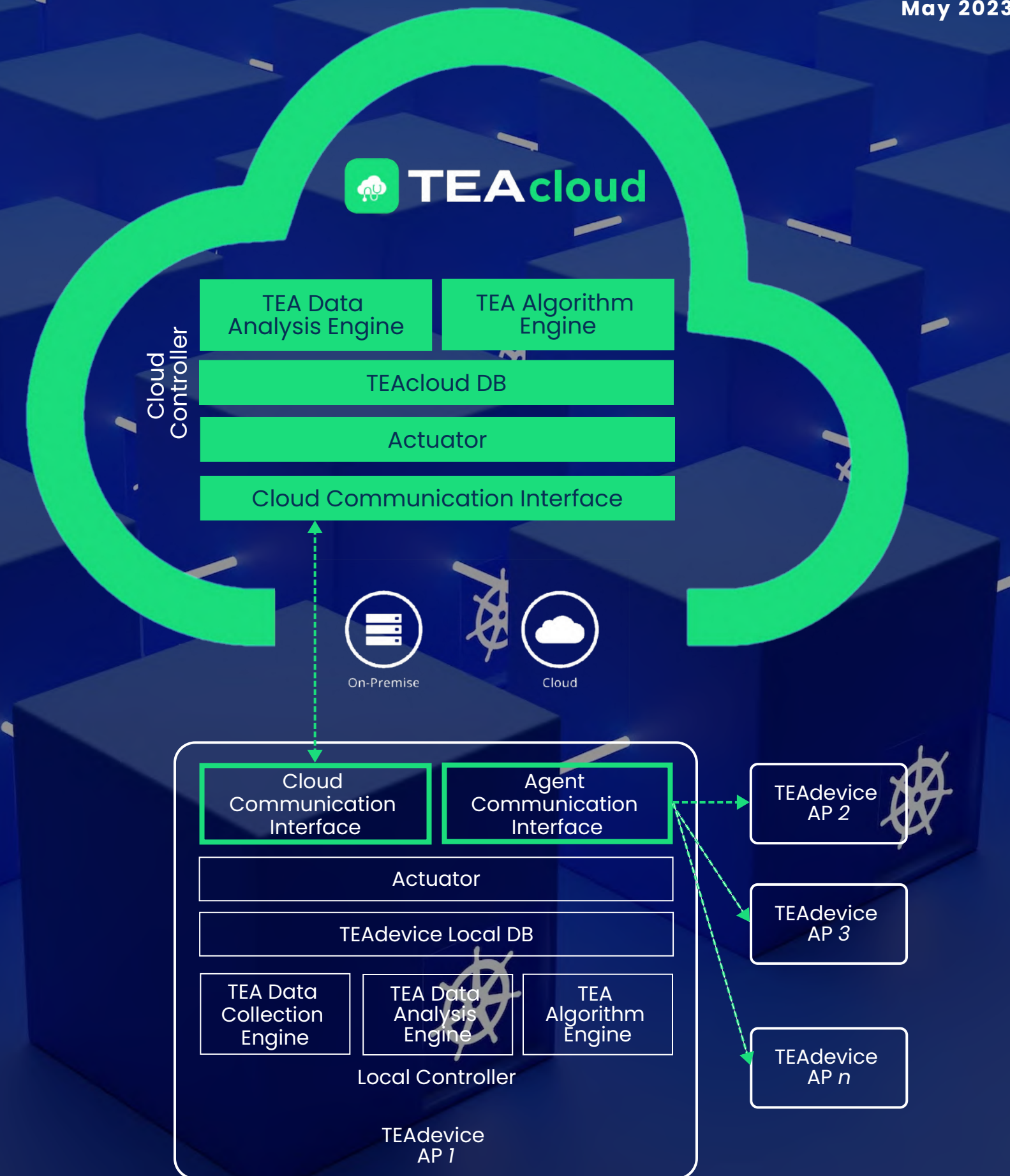
# TEAcloud

A single point real-time Wi-Fi management with the purpose-built AI Ops that automates maintenance for delivering long-term decision and policy making.

TEAcloud brings significant enhancements on self-optimization to improve the quality of user experiences with followings:

- Predict problems before they happen & optimize predictive channel selection
- Automate long-term analysis, pattern recognition and inter-network data correlation
  - Analyze historical performance to enable optimization with channel planning, steering optimization, support recommendations and performance tracking.
- Centralize management for enabling coordination among distributed nodes.
- Apply global optimization across multiple customers.

Fully containerized and can be deployed on any cloud or on-prem server.





# TEAdash

Interactive Actionable Insights with real-time and historical KPIs to display network health. High granularity and multi-layer support that shows real-time changes and replay past events and isolate subscriber's trouble conditions.

On-demand shows every change in the home network of past and current.

TEAdash offers intuitive device management through: advanced actionable dashboard that contains Wi-Fi management tools:

- *Discovery tools* - conducts daily anomaly detection with recommendation.
- *Investigation tools* - collects data for advanced analytics.
- *Action tools* - provide automated proactive actions and make recommendation with an Expert System that analyze problems with recommended actions.





**We get you the  
best attention.**