

# Milvue

Effective and Affordable AI

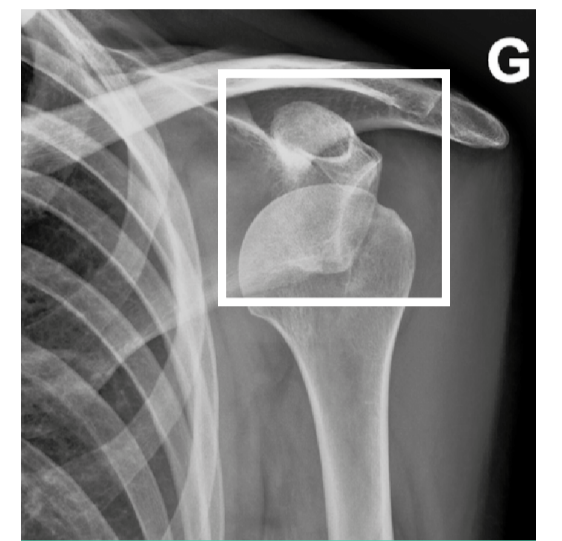
## SmartUrgences®

### 7 families of pathologies detected in 1 solution

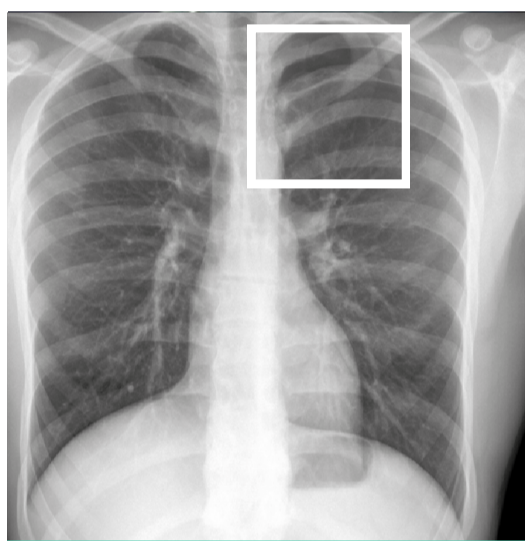
SmartUrgences® is the solution dedicated to prioritization for emergency and day-to-day radiography, covering bone and pulmonary pathologies detection for adults and pediatrics. SmartUrgences®, a class IIa CE marked medical device, is part of the Milvue Suite.



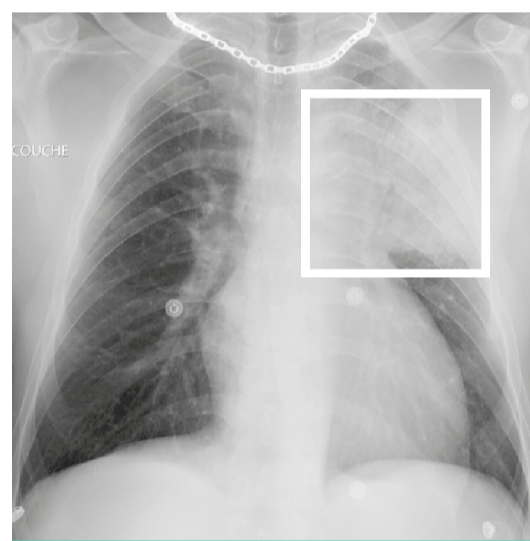
Fracture



Dislocation



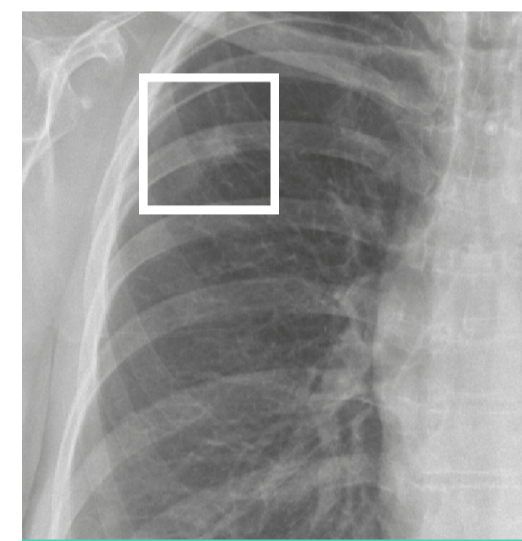
Pneumothorax



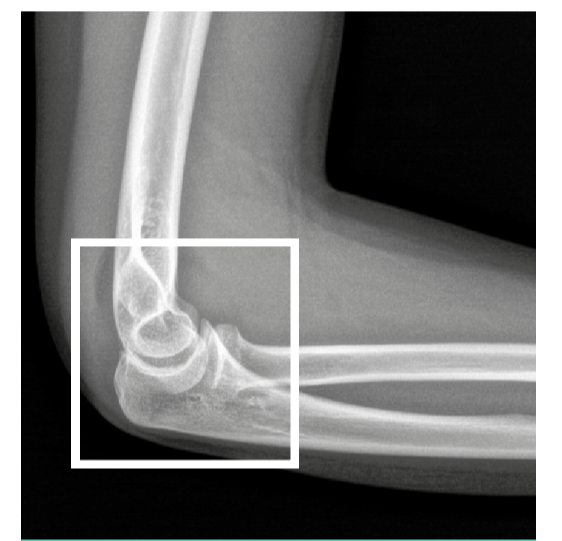
Pulmonary Opacity



Pleural Effusion



Pulmonary Nodule



Joint Effusion

**SmartUrgences® triage and detection capabilities enable improved patient care and productivity for your emergency and day to day X-ray workflow.**

SmartUrgences® decision support mechanisms secures your emergency and day-to-day X-ray workflow by providing instantaneous primary findings

**Up to 90 %**

Reduction of Misdiagnosis in ER

**1min**

Turnaround Time

**99,2%**

Negative Predictive Value

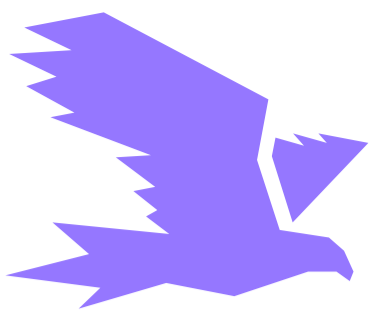
**SmartUrgences® integrates natively into your different information systems (RIS, PACS, HIS & AI platforms)**

If you wish to learn more of our solutions and enjoy a live demo, contact us at : [contact@milvue.com](mailto:contact@milvue.com)

*SmartUrgences® is a CE marked, class IIa medical device developed by Milvue.*



TK202301V2EN



# Milvue

Effective and Affordable AI

## SmartXpert®

### Automatic quantification of MSK measurements

Patented since 2020, SmartXpert® is an unparalleled solution that automates more than 30 X-ray angles and measurements within a 1 min turnaround time



Spine



Shoulders



Pelvis



Lower Limbs



Feet

Cobb Angle

Pelvic Tilt

Hallux Valgus

CSA Angle

Sagittal Balance

Hip Dysplasia

Cavus Foot

HKAA

## X-rays

Stitching & EOS

## 1min

Turnaround time

## Reduced

Interreader  
Variability

**SmartXpert® offers productivity gains and standardization of your practices thanks to the automation of your measurements**

**SmartXpert® integrates natively into your different information systems (RIS, PACS, HIS & AI platforms)**

*SmartXpert® is not CE marked and is only available for clinical research purposes.*

Follow us on social media

Website: [www.milvue.com](http://www.milvue.com)

