

How one community oncology site found clarity to select the right trial

Study Basics

- **Disease:** Breast Cancer
- **Sponsor:** Genentech
- **Phase:** 3
- **Time to LPI:** 18 Months

Background

Community oncology site Luminis Health Anne Arundel Medical Center was struggling to bring on the right trials for their patients at the right time. Inato helped them gain visibility to trials with advanced details and timelines to make more informed selections.



The Problem

Missing out on quality opportunities:

Luminis Health Anne Arundel Medical Center, a community site based in Maryland, found themselves fighting an uphill battle when it came to identifying quality trial experiences for their patients. Their team rarely got first pick at trials, they'd get opportunities that didn't meet their patients' needs, were less than ideal situations like rescue trials with condensed timelines and high pressure to kick off quickly, or they'd get good studies that came through at the wrong time for their patients or pipeline, forcing them to reject opportunities without knowing when they'd get another chance.

Time and efficiency:

Even when an attractive trial came their way, Anne Arundel reported that the decision to move forward with a trial is rarely quick.

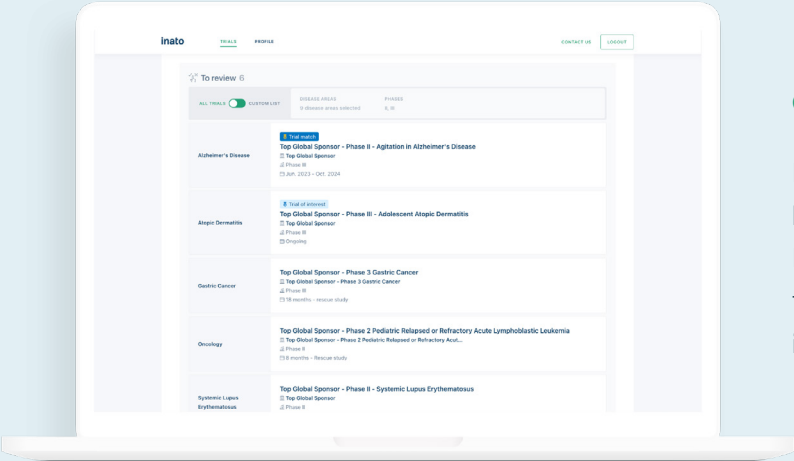
The protocols we get from pharmaceutical companies are usually over 100 pages long, and a lot of the time that's all we're given to look at. So we have to dig through and pull that information out.

Erika Siegrist, Director, Research Administration

Faced with the burden of impractical, lacking information, they seldom receive the details they truly need, especially in a reasonable time frame, to make an informed choice on whether a trial is the right fit. This turns crucial decisions about bringing needed treatments to their patients into a guessing game.

The Solution

The research team at Luminis Health Anne Arundel Medical Center sought out a solution for alleviating the burdens of time consuming decisions, missing out on high quality studies, and being overlooked by sponsors. They signed up for Inato to gain more visibility into trials, boost efficiency at their site, and find the right opportunities at the right time.



GAIN VISIBILITY INTO HIGH QUALITY TRIALS:

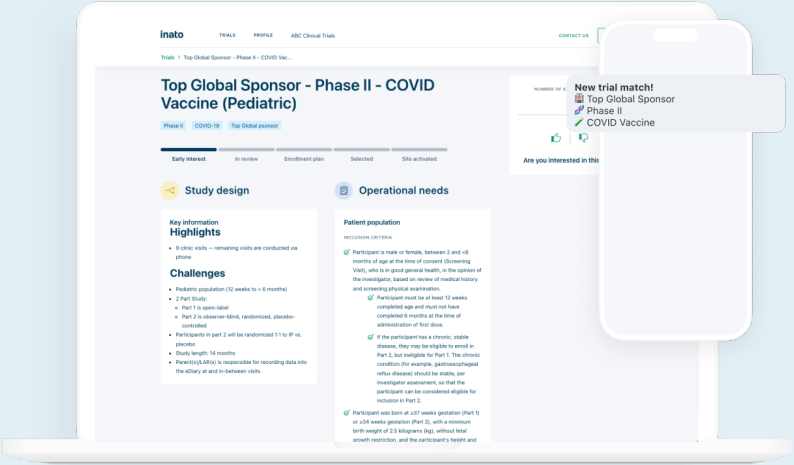
Inato works with top pharmaceutical sponsors to bring high-quality trials to community-based sites. All of Inato's trials are visible to sites on the platform. With the ability to filter available opportunities that fit their interests, patient needs, and capabilities,

SELECT THE RIGHT TRIALS WITH CONFIDENCE:

Siegrist shared that Inato's platform mitigates the burdensome process of hunting down and combing through a study's critical information. Inato pulls the important information from trial protocols and presents it to sites so they can skip the step of digging through extensive files. Sites can choose whether or not to move forward with a trial without going back and forth with the sponsor or requiring hours of reading through tedious details.

We don't have the resources to open many studies at a time, so it's even more important to make the right decisions on the best trials for us. When you can see these studies side by side, it really helps us make better decisions on what's the right fit for our sites.

Erika Siegrist
Director, Research Administration



FIND OPPORTUNITIES AT THE RIGHT TIME:

Inato's platform also reduced the challenge Anne Arundel faced of being offered the wrong trials or the right trials at the wrong time. With Inato they found they were able to view relevant trials open for application as well as those that will be open down the road. Siegrist said it enabled them to more easily plan and prepare for upcoming opportunities.

Having the power to choose what trial they want to apply to when its right for their team and patients resulted in bringing this breast cancer trial to their community and quickly enrolling their first patients.

It's extremely helpful to see the timelines for when things are opening and closing. And with Inato we're getting it more in advanced than we typically get other studies. I just saw a trial on Inato that isn't even opening for another 7 months!

Erika Siegrist, Director, Research Administration

I like Inato because the trials that are in there look to be “good,” “decent” trials, and I like the information we get with them. Normally academic sites get the first right of refusal for “good” trials and we end up as a rescue site.

With Inato, we're getting in the trial at the beginning, and it's an attractive trial to patients and physicians. Inato brings those studies to community sites more equally than [sponsors] just going to the [same] academic centers – presenting more of the community sites back to industry.

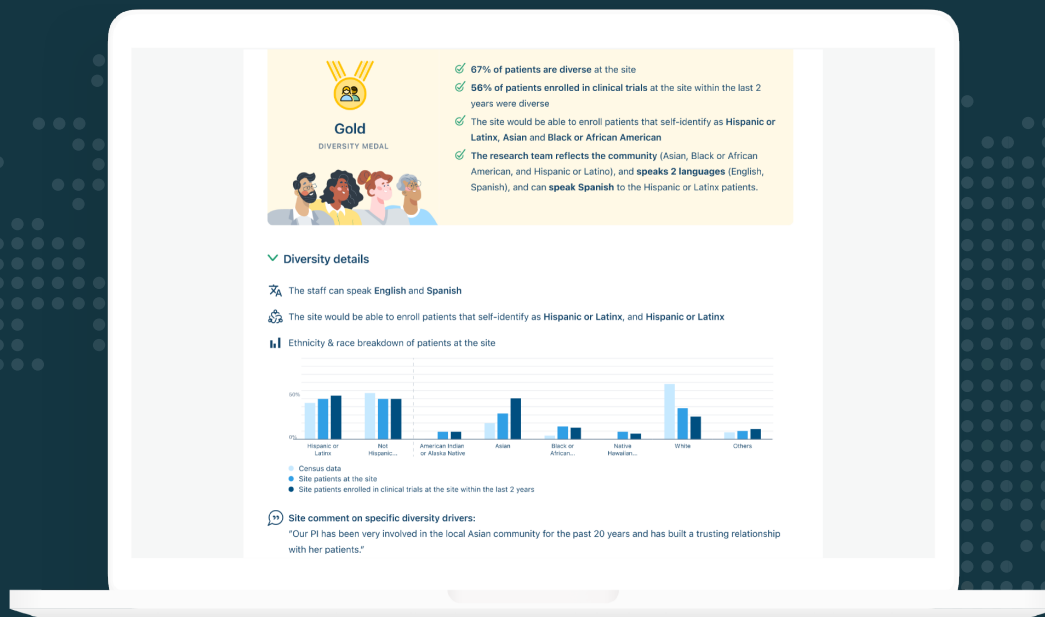
Erika Siegrist, Director, Research Administration



Interested in gaining more power to find and pursue the right trials for your site? Sign up for free at inato.com.

POWERING ACCESS TO TRIALS IN THE COMMUNITY

Free for Sites



Learn more and sign up.

inato.com