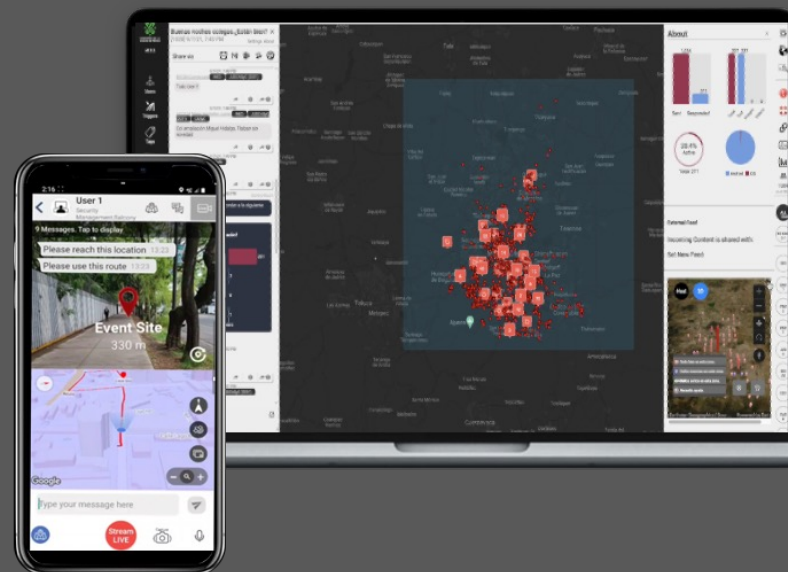


MESSAGING REDEFINED FOR OPERATIONAL RESILIENCE AND EMERGENCY RESPONSE

Revolutionize communications and control in an increasingly dynamic and connected world:
Empower action, boost safety, and enhance efficiency



For Smart Building | Smart Campus | Smart Enterprise | Smart City | Smart Nation

Location-Aware Messaging and Orchestration: **Why Now?**



As we move around, our emails, Teams accounts or phone numbers do not change.
Yet our relevance to events constantly does.



There's a growing gap between the huge amounts of data generated by AI, IoT, GIS...
and the ability to actually act on it.

Balcony's platform bridges those gaps **Turning Insights into Action:**

- ✓ Enhancing situational awareness and action-taking **for both the people in charge AND the people they're in charge of**, facilitating the flow of mission critical info faster than ever
- ✓ Innovative technology flawlessly merging mobile messaging, GIS, analytics, AI, and AR into an intuitive and simple to operate User Experience
- ✓ Modular B2B SaaS platform with open architecture for seamless integration and solution enhancement
- ✓ Trusted by Fortune 500 companies, major cities, and top international NGOs.



ONE PLATFORM TO EMPOWER:



Security and Emergency Response

Reduce risk and respond faster to incidents



Travel Safety and Corporate Duty-of-Care

With a global reach from anywhere



Operations & Site Management

Gain visibility and granular control



Event Orchestration

Transform emergencies into manageable situations



ESG management

Generate on-demand awareness and proactive action



OFFERING A SOLUTION:



for Enterprise and industry

End-to-End operations and Safety



for Public Sector

Responders, employees, volunteers, citizens



for NGOs & Humanitarian

End-to-end field force orchestration



for Public Venues

Safety, Security and Crowd management



for Integrators

Smart [X] - Tap into our open architecture



Privacy by Design

GDPR compliant and unique No-PII engagement and user Opt-in from A to Z



Instant Onboarding

With capabilities such as 'temporary members' and 'Walk-in to Login'



The most familiar interface

It's multimedia chat, requiring ZERO training.
The Magic happens in the background



Mass Orchestration

Ensuring 'Just in Time' mission critical info flow across roles and siloes

