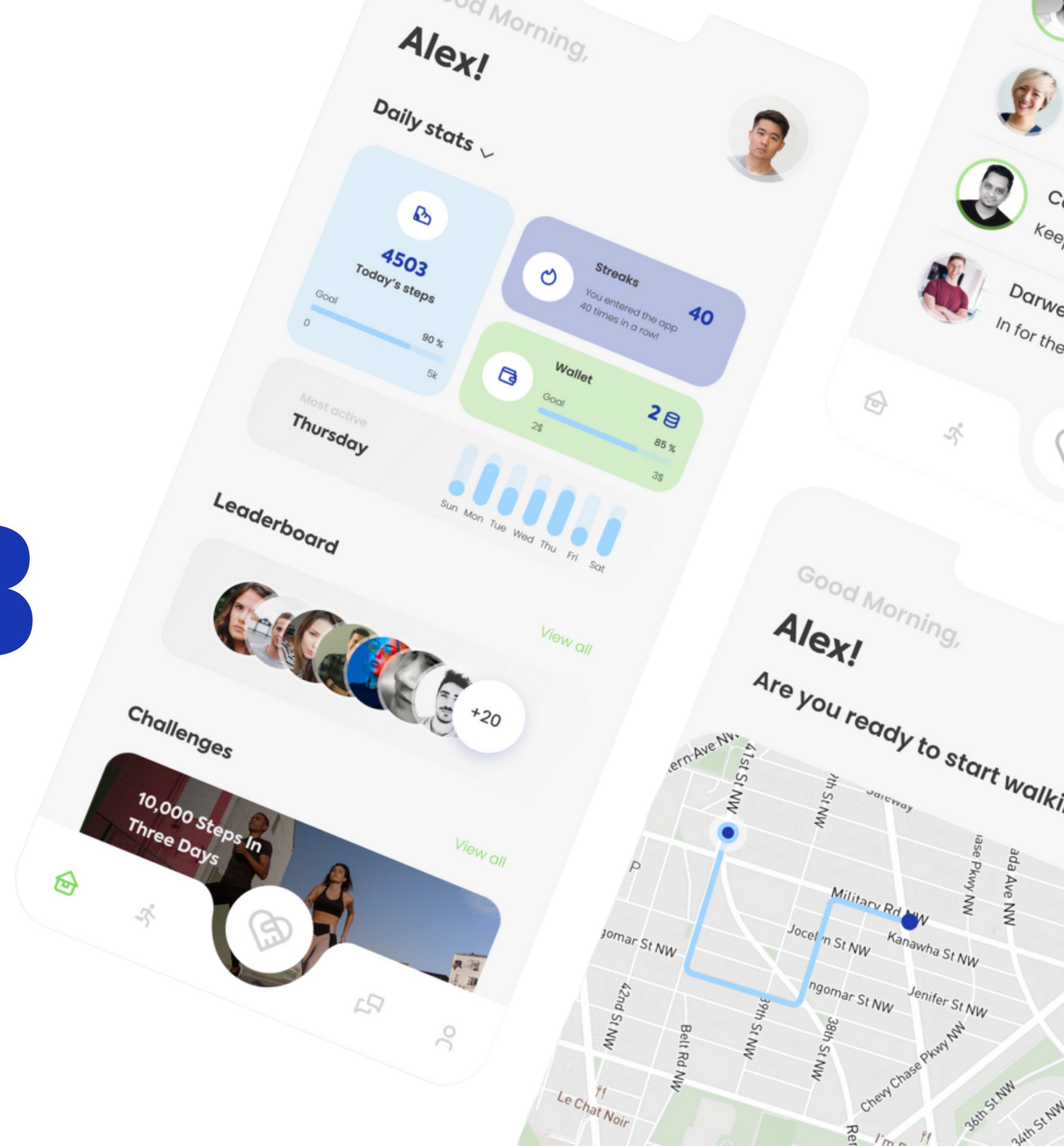


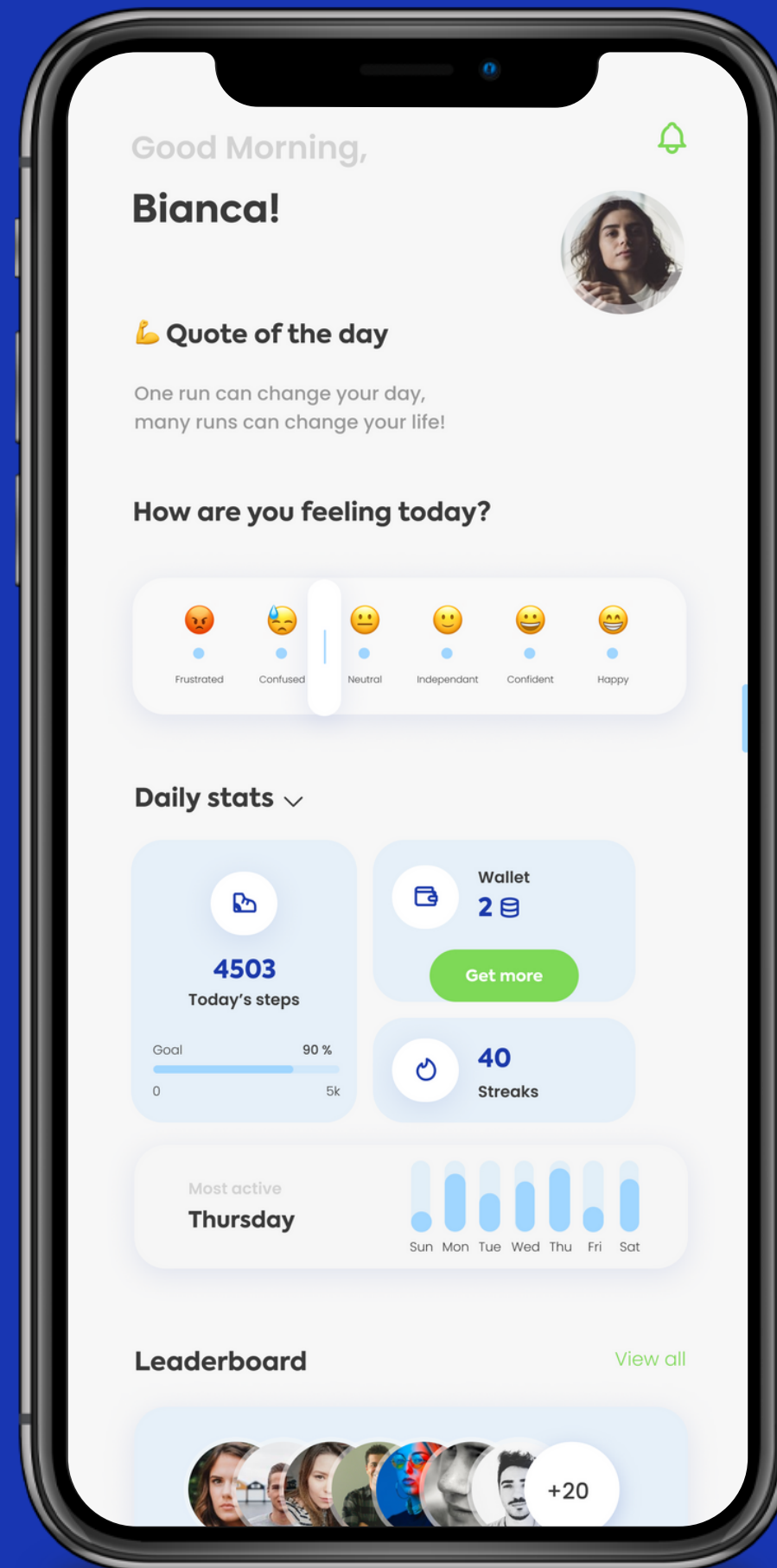


DONALEB

Scale your impact with
every step



Introducing DonaLeb



the **impact**
platform that

- motivates you to move
- helps you contribute to social change
- rewards you for every step



About DonaLeb

DonaLeb is a platform designed to **improve employee engagement**, corporate culture, and support charitable causes through virtual races.

We offer a comprehensive solution

1



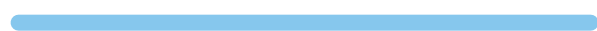
to boost team morale

2



promote healthy lifestyles

3



make a positive impact in the world



DonaLeb helps companies create a **positive and engaging work environment** by promoting **employee wellness** and charitable giving.

Improve:



Productivity



Motivation



Loyalty



Business outcomes

Give your employees features that can be customized to meet the unique needs of any organization.

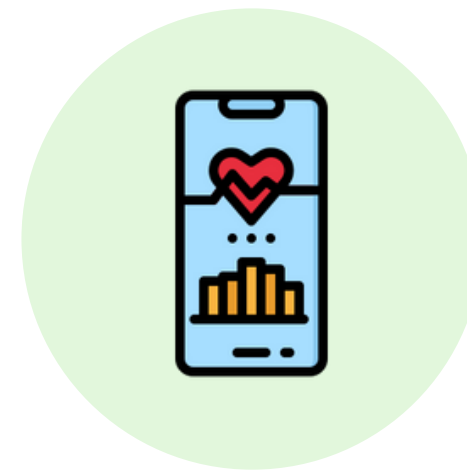
**Gamified
Experience**



**Virtual
Challenges**



**Impact Activity
Tracking**



**Live
Leaderboard**



Partner NGOs



Revenue Model

Features:

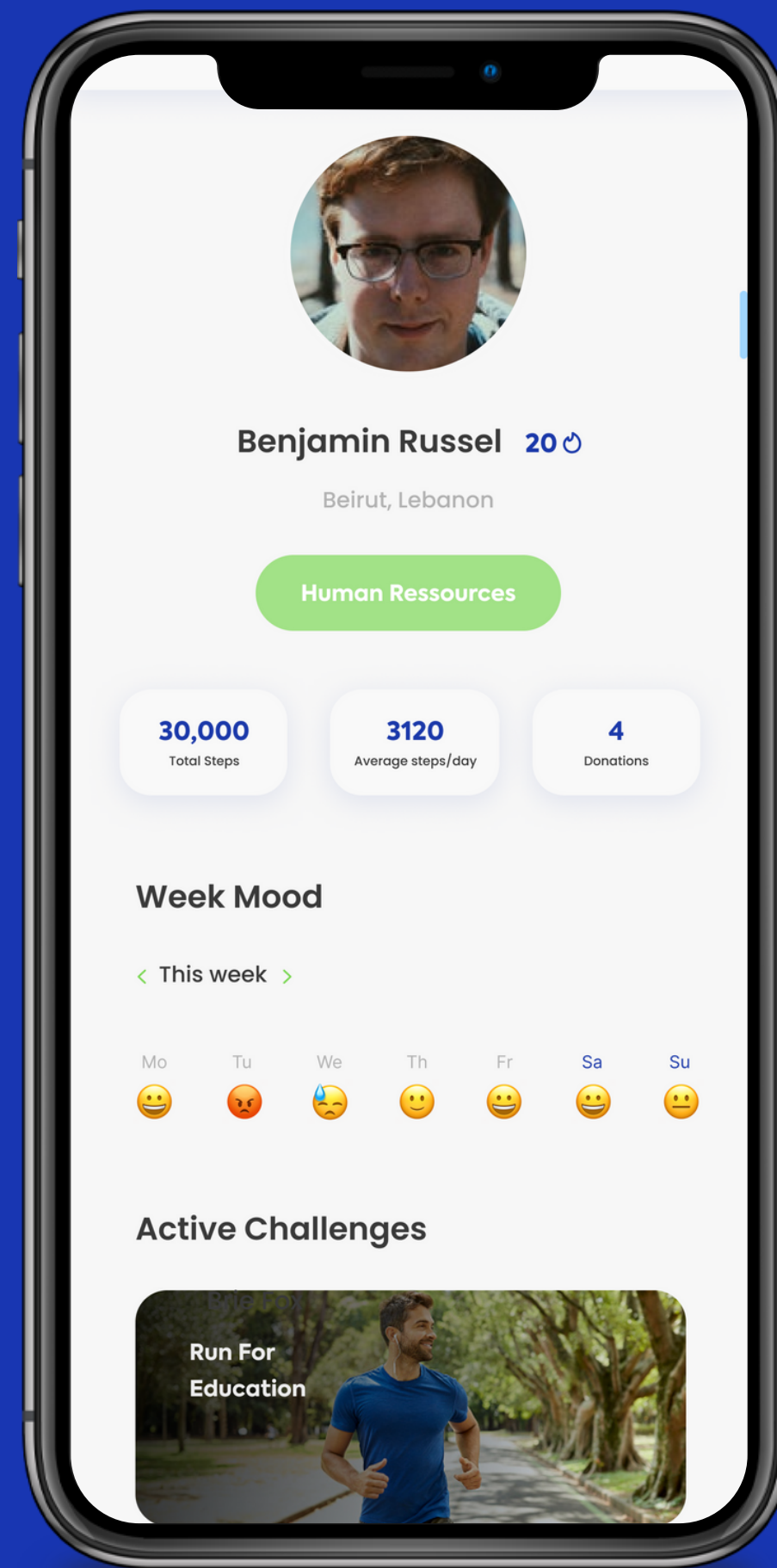
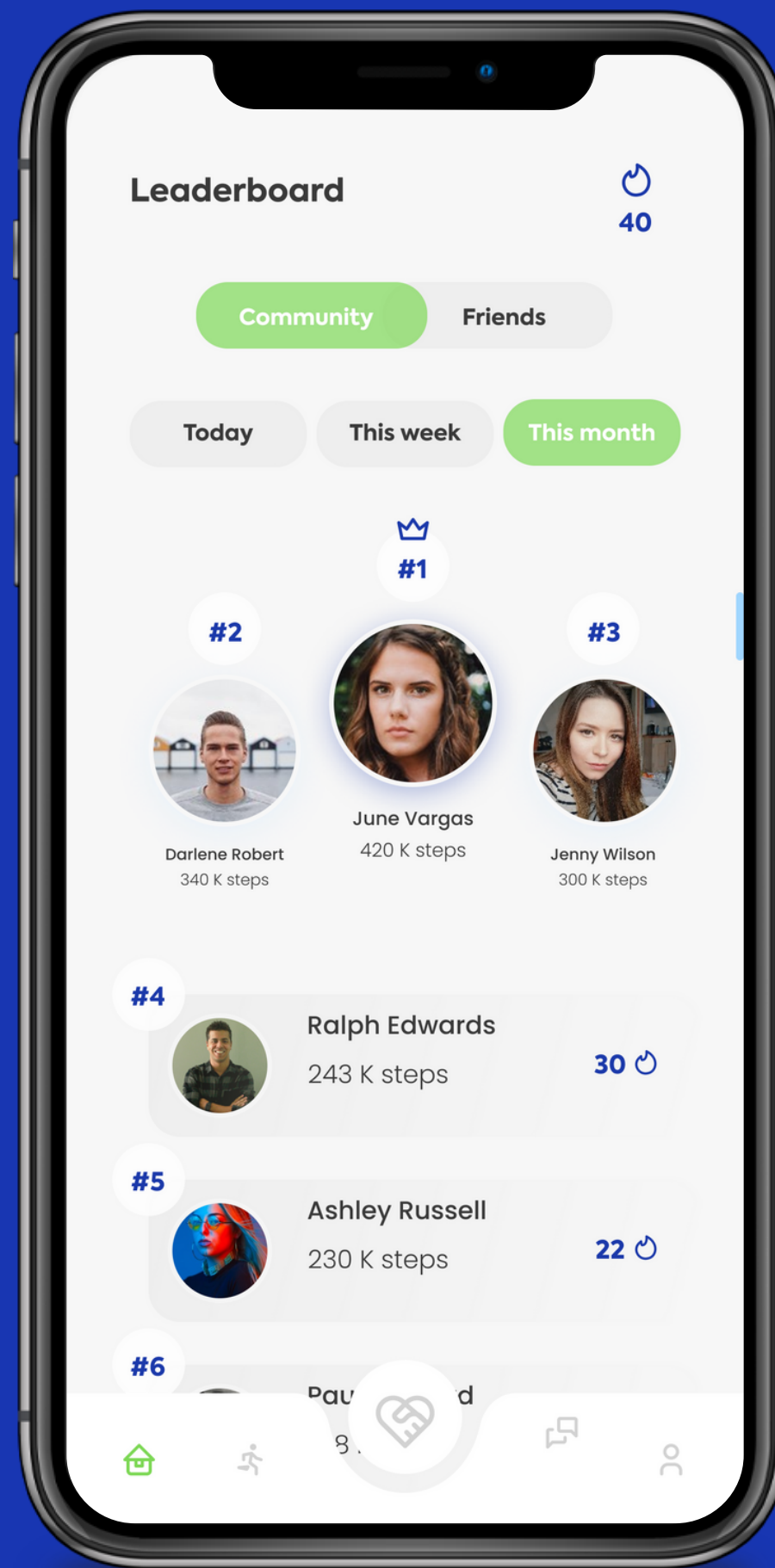
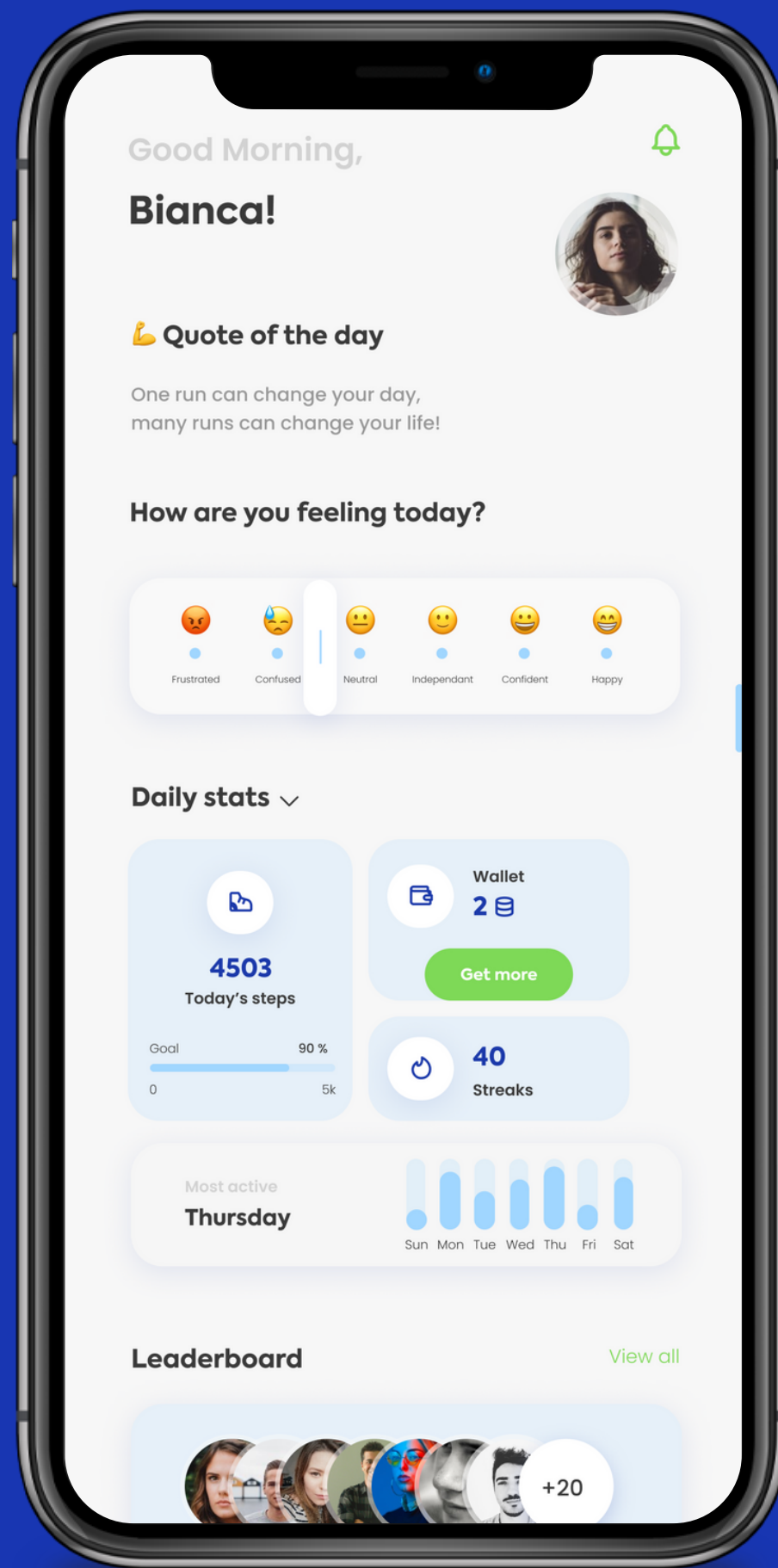
- Interactive mobile & web application
- Community feed, leaderboards, teams, and in-app chat.
- Customized branding
- CSR activities through charitable giving
- Logo placement, filters, and communications according to your branding
- Unlimited mini challenges (Running, yoga, recycling..)
- 100+ hours of unique wellness content created by experts.
- Access to admin backend & KPI measurement
- Add or modify challenges and download reports

One Time Challenge

\$5 / User / Month

Yearly Wellness

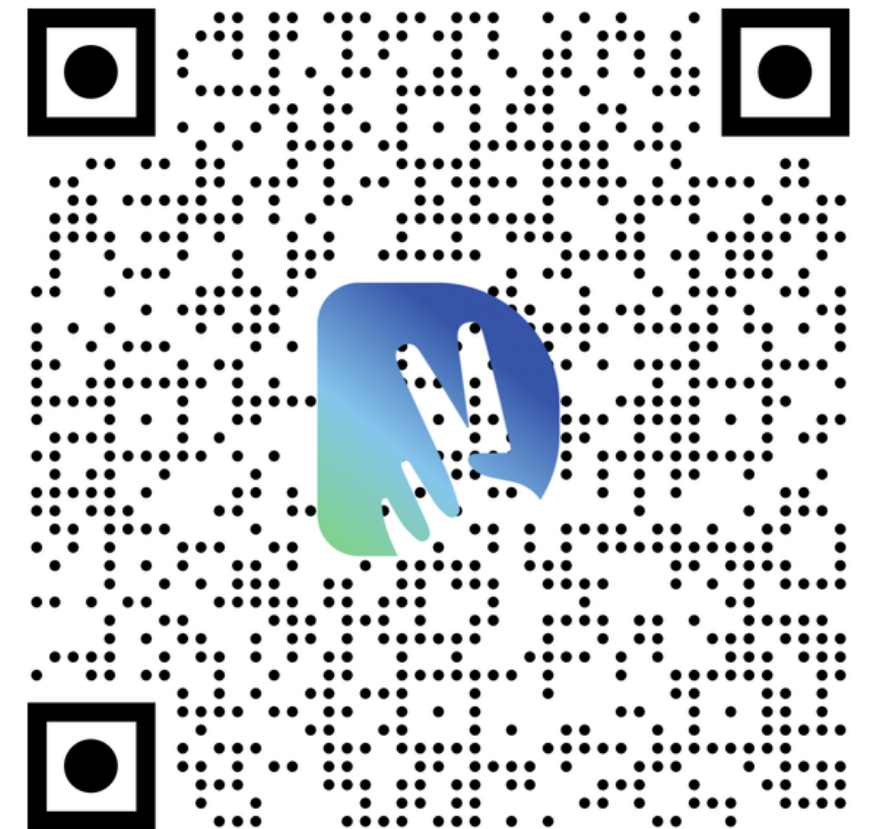
\$3 / User / Month



Are you ready to make a change?



Scan to download



Yasmine Darwich

yasmine@donaleb.com