

# BubbleRAN MX-HUB PLUG-AND-CONNECT NETWORK-IN-A-BOX SOLUTION



OUR TECHNOLOGY

**bubble  
ran**

YOUR NETWORK

We are helping organizations to seamlessly build, operate, and automate their private 4G/5G network infrastructure by consolidating standard-compliant open RAN and cloud-native architectures with a green service management and orchestrator (SMO/MANO) offering more than 10x business agility and flexibility as well as network efficiency with lower carbon footprint for a wide range of R&D and enterprise use-cases from the lab to the production environment.



@BubbleRAN\_



@BubbleRAN



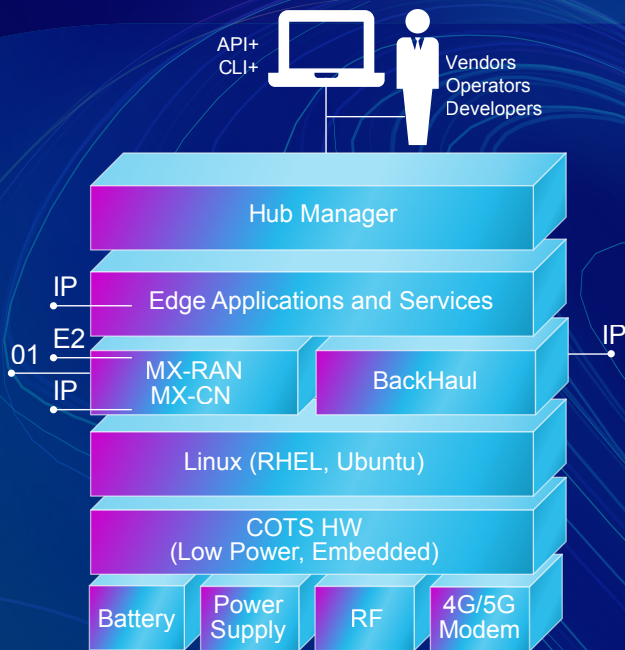
+33649926345

[https://bubbleran.com/  
contact@bubbleran.com](https://bubbleran.com/contact@bubbleran.com)450 ROUTE DES CHAPPES  
06410 BIOT - FRANCE



# MX-HUB

The MX-HUB is an integrated all-in-one 4G LTE and 5G NR network in-a-box solution with integrated edge services and multi-mode backhauling allowing to rapidly deploy a 4G/5G network in three different operational modes including standalone, relay, and mesh networks. It features low-cost, low power, small form factor, light-weight, and portable.



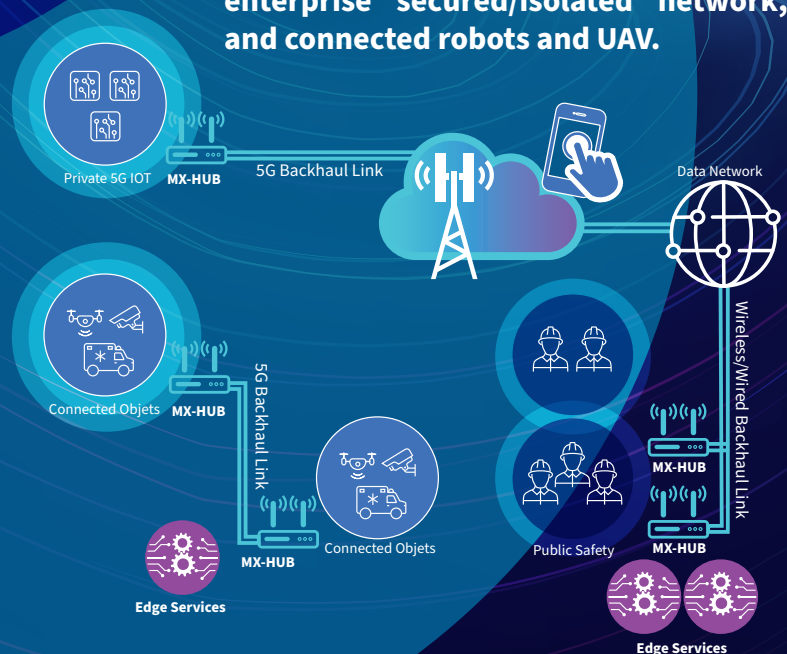
The MX-HUB is an ideal solution for many private 4G/5G network use-cases ranging from IoT, public safety network, enterprise secured/isolated network, and connected robots and UAV.

## CAPABILITIES:

- gNB/eNB with Lightweight Core Network
- VoLTE/VoNR
- Remote API, CLI, Configurable Logging
- Relay and Mesh with Routing
- uRLLC & xMBB Services

## CHARACTERISTICS:

- Dimension: 23x19x8cm and 23x19x16cm
- Weight: 1.5 kg
- Power Consumptions: 40W typical
- RF Output Power: 20W
- Frequency: 3GPP Bands
- Bandwidth: LTE 1.4-20MHz, NR 5-20MHz
- Operating Temperature: 273K to 333K (0°C to 60°C)



### Use Case: Shadow Zone Coverage



### Use Case: Data Collection Mule

