



MISU

Chance to live long

72% of death are
from heart diseases



20% of deaths from
mental health diseases



too expensive



too long



Problem

The average age
depends from



Heart
diseases



Stress



Heart
attack

Our main competitor

THE HABIT: people react to a critical situation after it has happened



For fun



Trends



Prediction



OURA



CLIEXA



HUIINNO

WHAT WE TOOK?

AI



+

Trends we use
every day

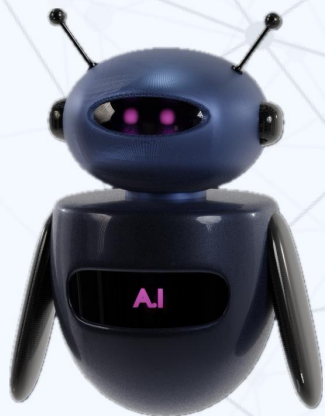


+

objective AI
for different
types of
medical
Data



SOLUTION



AI

+



MISU Watch

+



Apple Watch

+



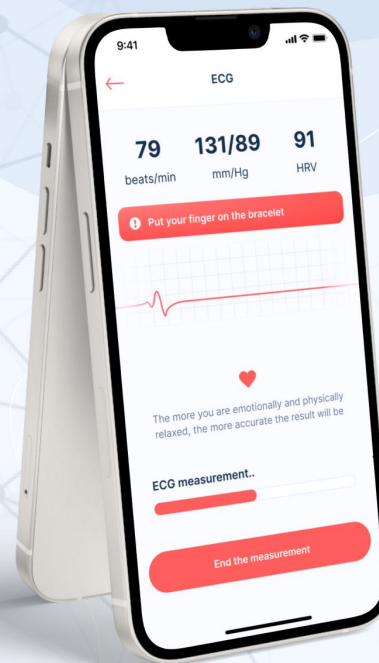
Features available in EU

+



New sensors

MISU Application



ECG



Smart device



Family health stories

HOW IT WORKS?

MISU builds scenarios for each moments of your
and your family conditions



User



Glucose in blood



ECG, HRV



Heartbeat



Blood pressure



DNA analyses and other
data



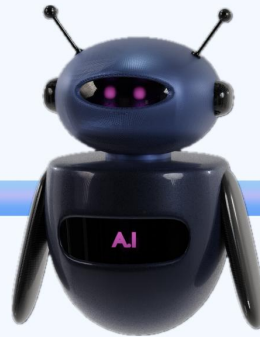
The testing itself



Level of stress



Family Health History



Analyzing
by special AI algorithms



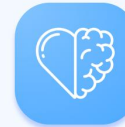
2 types of forecast - Health
forecast 2 weeks and 10
years ahead



Recommendations with
specific actions



Connect with doctors
immediately and create reco



Additional recommendations
for working with mental health

ROADMAP



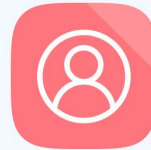
>80% prediction accuracy



\$300K raised



Developed device to predict period on cows



2000 users



We did all this in 2 years

Last activities or International Awards

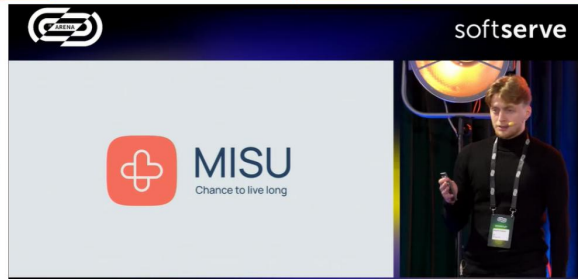
Won Poland Prize

NINJA

TOP-12 Techentrepreneurs of Europe

Acceleration Eurotechnologies

Won USF



Business strategy

B2C

Family subscriptions

You can see & track the all families members health in real time & always to now about future risks

Already started

15% of revenue share

PTSD tools for mental health

Tracking the emotional state in real time and helps increase the effectiveness of treatment

Start July 23'

5% of revenue share

Health reports subscriptions

Personalized health reports that will include info about the body's condition, disease risks and recommendations for maintaining health

Already started

20% of revenue share

MISU Watch sales

Sales MISU watches (2 types of smart devices, with and without airbags)

Already started

50% of revenue share

ADV

AI algorithms processes medical data that is available to users in any country in the world

Start June 23'

5% of revenue share

B2B

Insurance subscriptions

Provide users with health insurance up to UAH 50,000/year and consultation with a doctor at any time 24/7

b2b

Already started

Free for MISU watches users

Fee from partners

Work with insurance, pharm companies

b2b

start May 23'

5% of revenue share

Measurement accuracy > 80%

6+ indicators



Glucose in blood



ECG, HRV



Heartbeat



Blood pressure



DNA analyses and other data



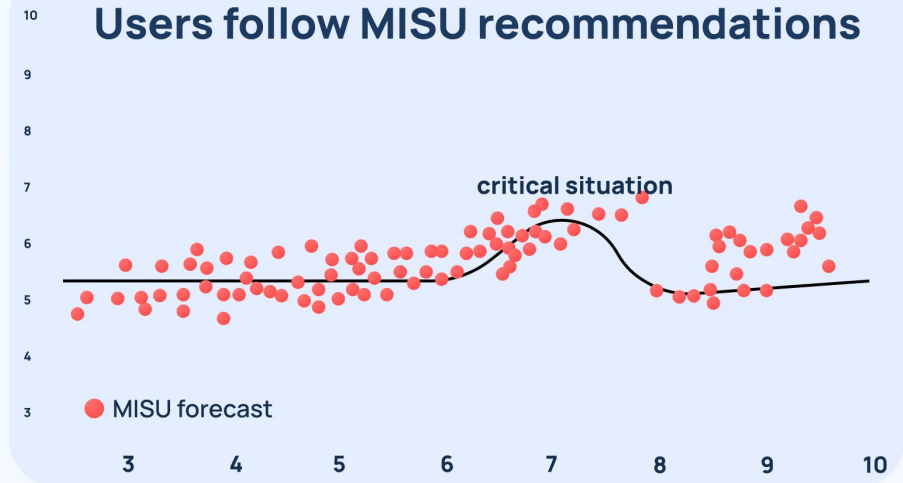
The testing itself



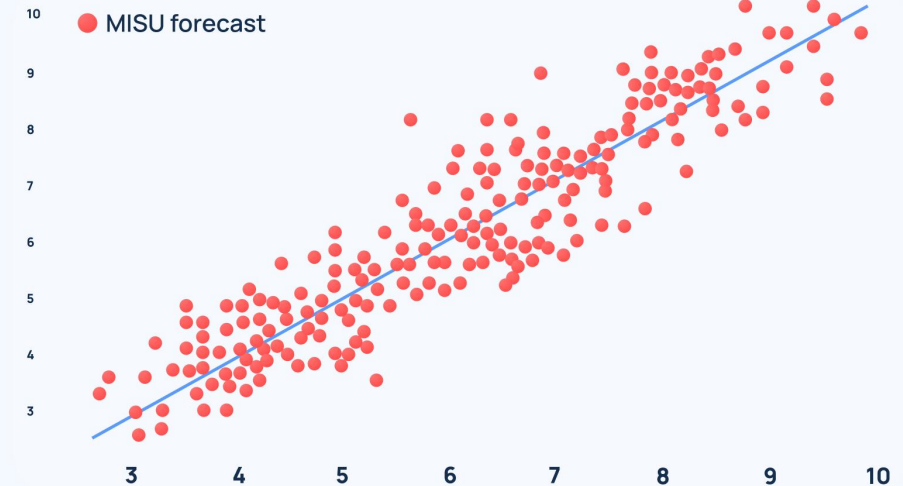
Level of stress



Family Health History



Statistics if user doesn't use MISU



START OF '2023'



4MedBox
in March 23'



Got White Papers
in Feb 23'



Future4Care
in March 23'



Start sales
in Feb 23' : 1400 downloads



MISU include CRM Askep
in Apr 23'

ORACLE®

Big Data support

IBM.

Helicopter View

B2G

Available anywhere

International supporting

New habits ✓

Impact on people's life expectancy ✓

Using smart watches ✓



CEO MISU Meets with President of France Emmanuel Macron on VivaTech 2022



MISU with Japanese Partners from JICA



MISU meet with President of Poland Andrzej Duda



MISU

MISU Team



Volodymyr Shevchuk
CEO, Founder

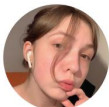


Dmytro Kruhlov
COO, Co-founder



Oleksandr Kolenchuk
CFO, Co-founder

Marketing



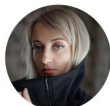
Weronika Chertoryzhska
CMO

Design



Mykola Kononchuk
CDO, Product Designer

Development



Olena Levenets
Frontend Web Developer



Andrii Podobailo
Lead Web Developer



Fares Cherni
IOS Developer



Dmytro Khosh
Android Developer



Sofiia Orzhekhovska
Data Science



Pavlo Olshansky
Back-End Developer

Already in MISU

Science



Poland medical assistance



Insurance



MISU in 2024



NEW PPG SENSORS (non invasive)



Family health history



Mental health

Chat GPT add



DNA analysis



Pharma



Predictions

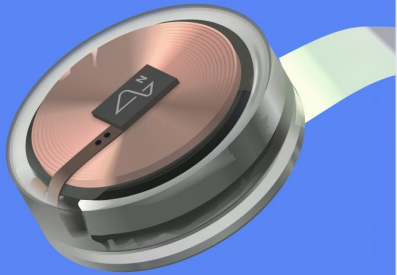
Manufacture the thinnest MISU String bracelet & start of sales



MISU

Chance to live long

Thanks for attention



Neuralink
Brain-Chip



***Siri 2.0**



**VR Doctors
education**



Hydrogen drone

**Do we understand that all of
these products will exist? YES**

**But for this humanity needs a lot of time & without AI, using Big Data
all this prototypes only try to direct emotions, remotely education or new type of delivering.
Primary medicine automation is a necessity right now, and IT professionals and partnerships
with medical partners should start doing it.**