

Ax:son Jonson Foundation

Peter Elmlund

Mohenjo-daro



Timgad, Algeria, AD 100



Piazza Umberto I (Avola, Italy) 1700



Barcelona, late 1800-

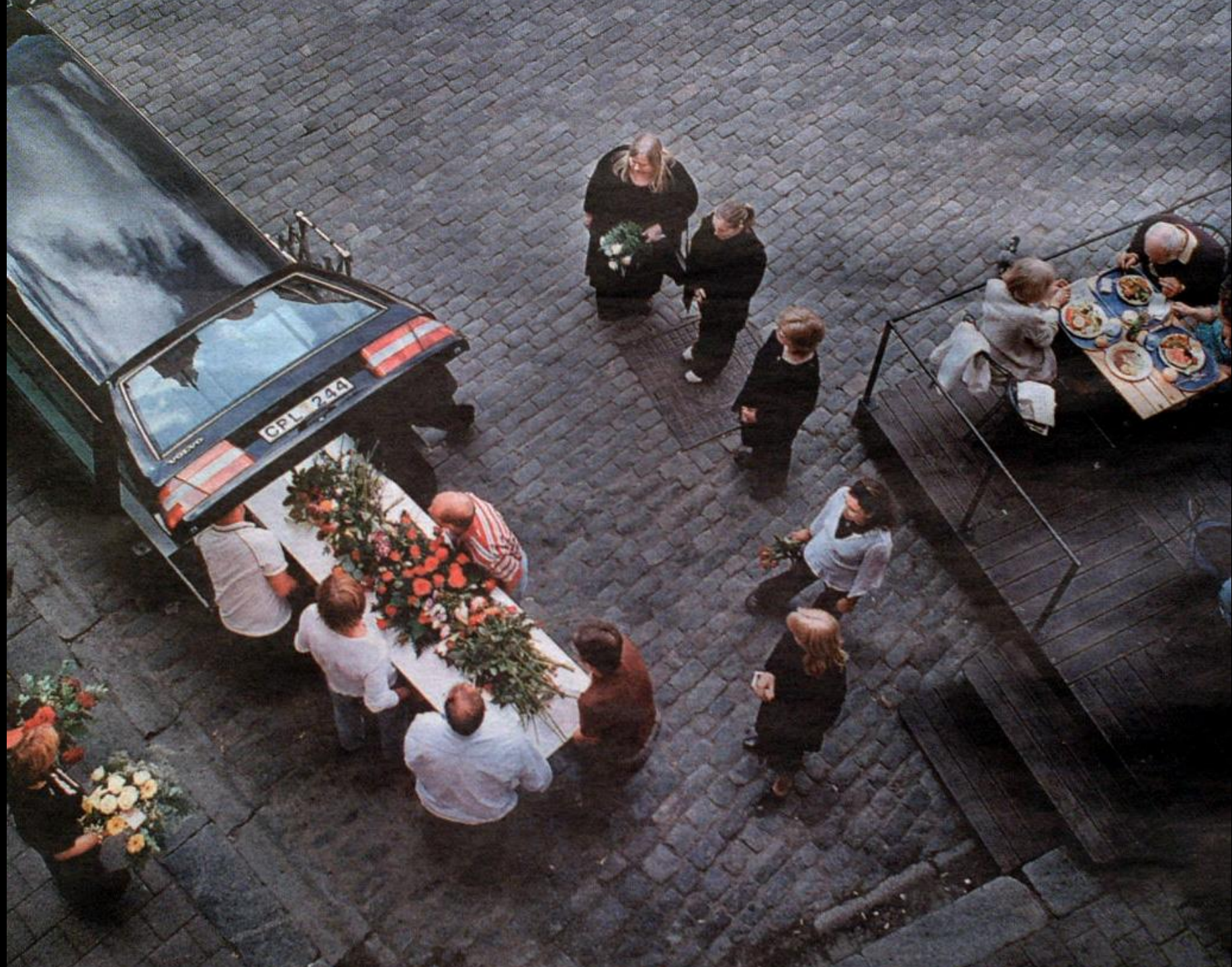


Manhattan, 1800-

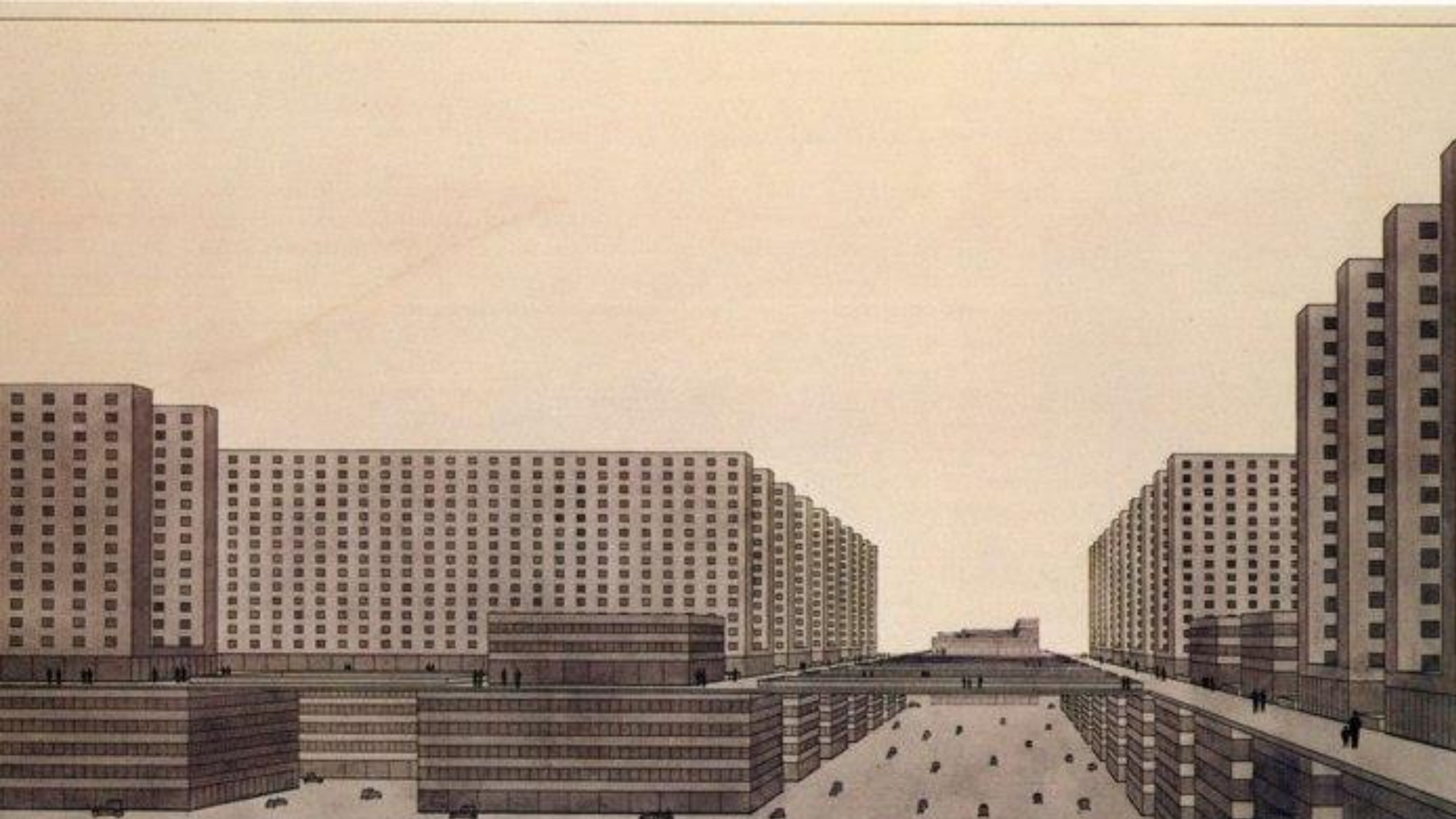


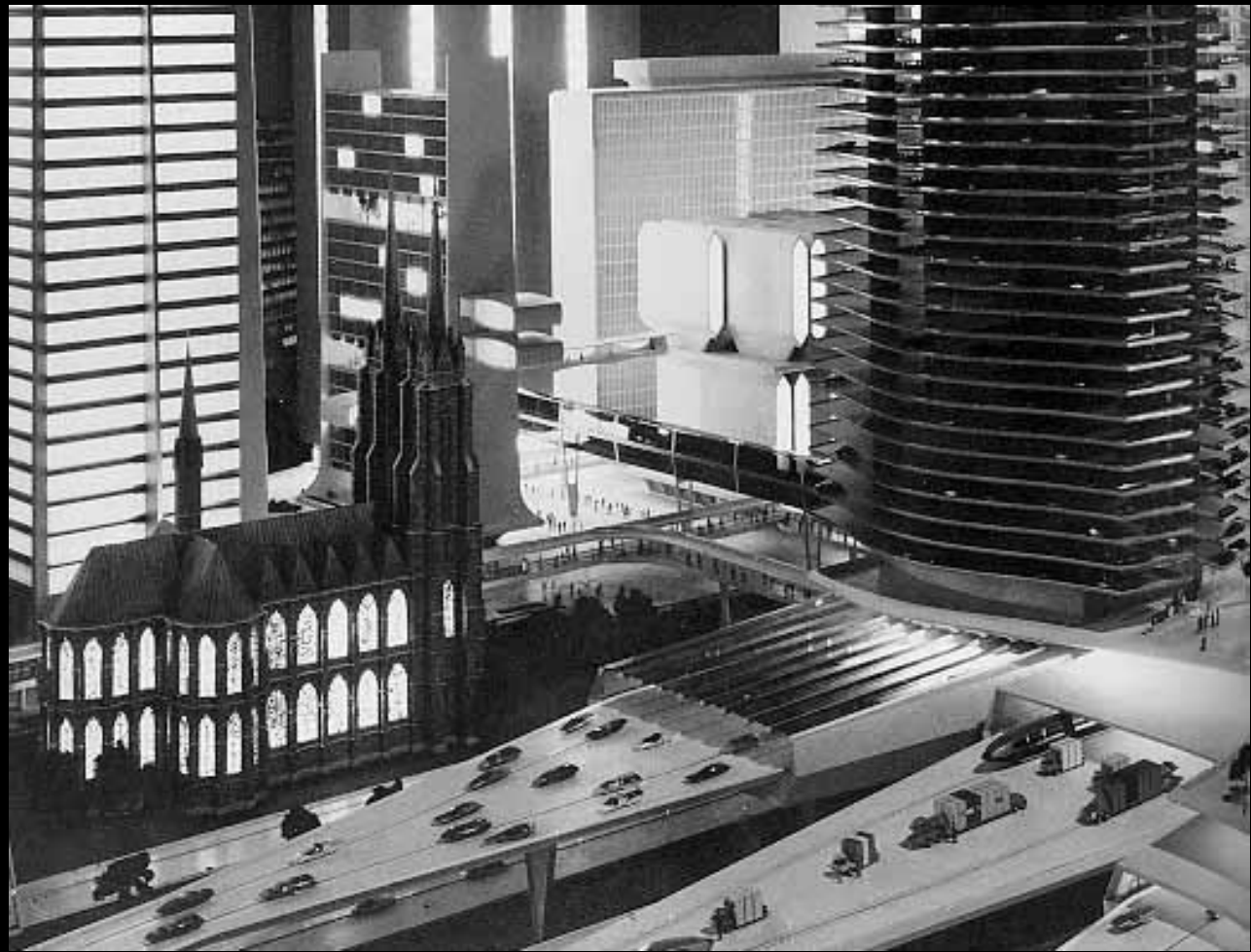
The Standard Model

- This standard model organizes movements and activities so that while everything has its place, it is at the same time connected. Ideally, all places are adjacent to other places.
- This proximity between the different types of behaviors creates many externalities, some negative but for the most part positive.







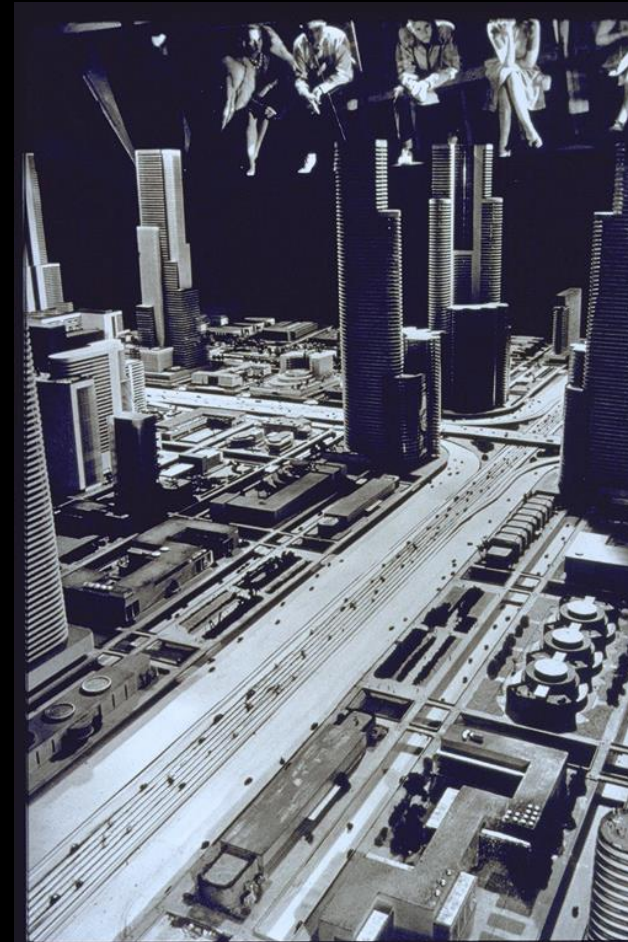


1939: New York World's Fair

General Motor's Futurama



Lobbying för Interstate highways





Postwar planning

Self-employed % labor force in USA 1948 - 1992

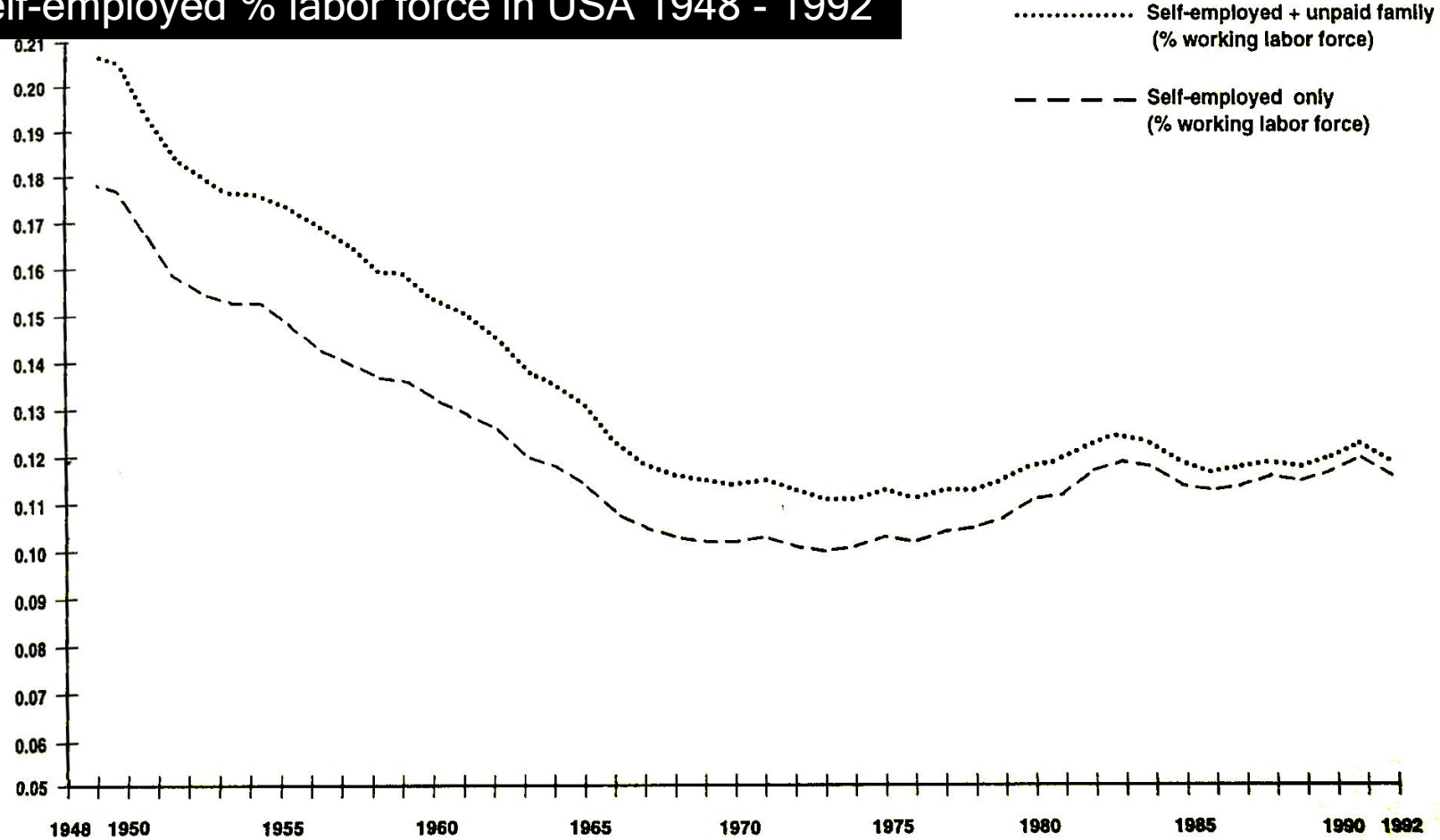


Figure 4.1 Time series for rate of self-employment in the United States, 1948-1992

1950

1970

1980



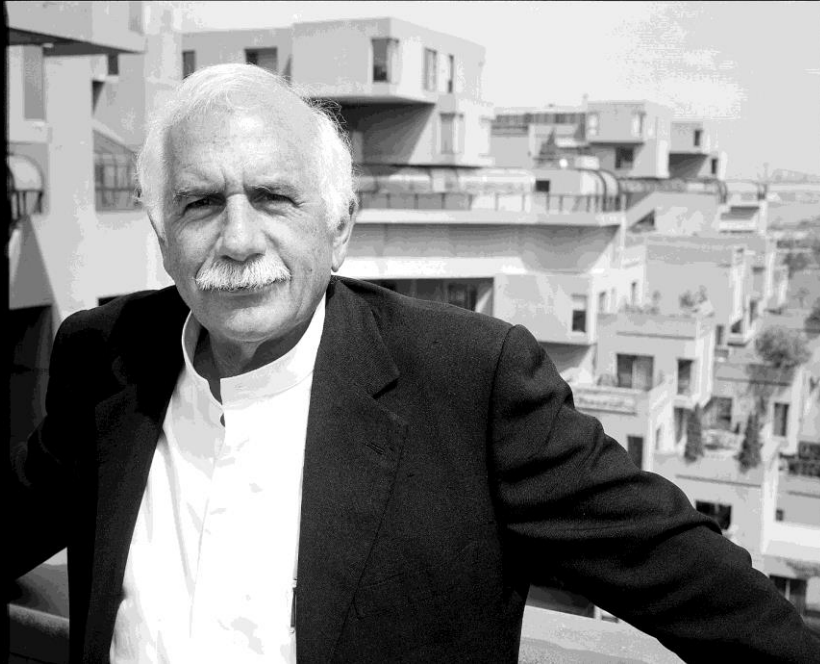
A black and white aerial photograph capturing the controlled demolition of a modernist apartment complex. Several multi-story brick buildings are in various stages of collapse, with massive, billowing clouds of dust and debris rising from the base of the structures. The surrounding cityscape is visible in the background, including a prominent arch-shaped structure on the left. The foreground shows a street with sidewalks, streetlights, and some trees. The overall scene conveys a sense of urban transformation and the end of a specific architectural era.

The Death of Modernism



Business as usual

Harvard's new direction



Moshe Safdie was director of the Urban Design Program at Harvard University's Graduate School of Design, between 1978 to 1984. From 1984 to 1989, he was Professor of Architecture and Urban Design at Harvard.

Moshe Safdie, The City after the Automobile, 1998

“By the 70s, the role of architects in creating a vision for cities had entirely shifted...

City planning...was incorporated into the Kennedy School of Government.

Architecture...remained in the Design School, ‘purified’ of the mundane and ‘elevated’ to the status of art.

Within a decade...Architects had withdrawn from the "vision of the city business" and retreated to the simpler world of formmaking at the scale of the building alone.”



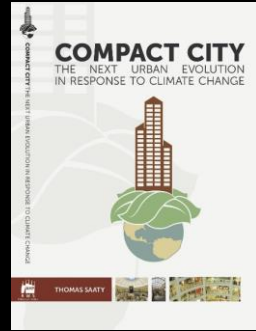
Prolonged bad planning



The long and winding road back to the grid city



New Urbanism 80s



Compact cities 90s



Sustainable Cities 2000



Walkable cities 2000-



Livable cities 2000-



Placemaking movement 2000-

The New Urban Agenda

